

Brought to you by SINGER and Kelly Anglin



Royal Flush Cover up



Tools:

- ☐ Sewing machine
- ☐ Seam ripper
- ☐ Pins
- ☐ Iron with ironing board

Materials:

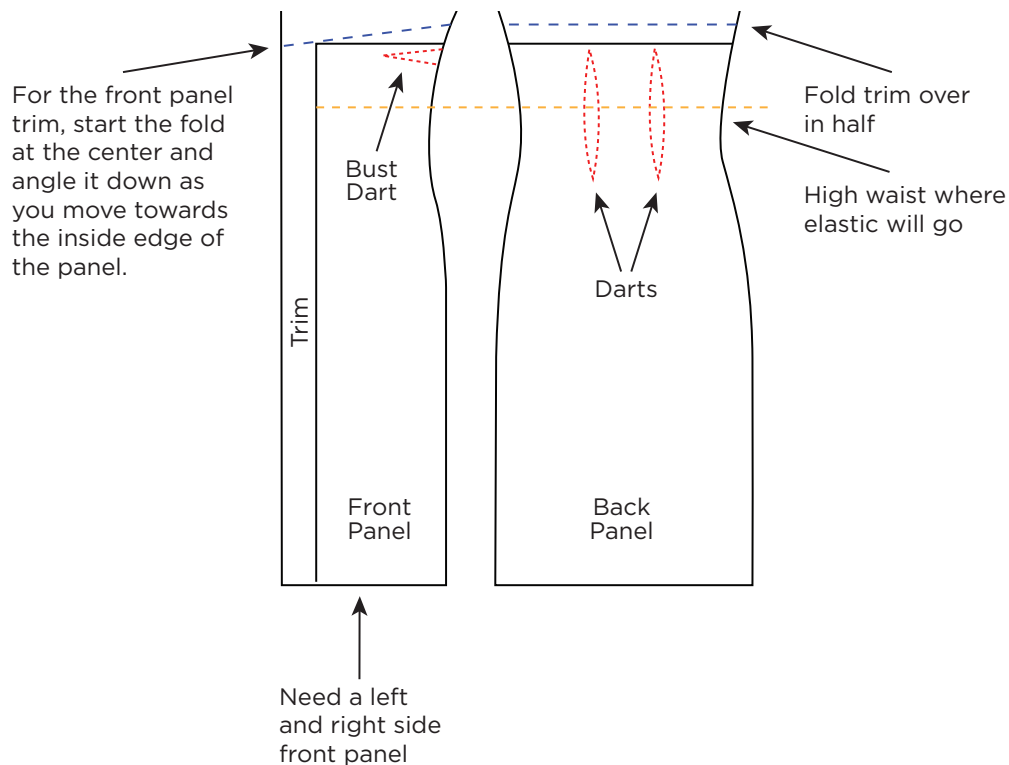
- ☐ Tablecloth (or fabric about the size of a "card table" tablecloth)
- ☐ 1/2" wide elastic
- ☐ 2 metal snaps
(you can use more if you would like)

General Sewing Notes:

I did not use a pattern to create this garment. I work by draping the fabric on myself, pinning where I need to, and visualizing what I need to cut and sew in order to create the shape I want. For someone who wants to recreate this garment, they can work off of a basic dress pattern in their size to know how much fabric to cut and where to place darts, etc. The dress was made using three panels: the back piece, and two front pieces that overlap each other about 2 inches.

Instructions:

1. Find a vintage tablecloth with a quirky pattern (or any type of light fabric you want to use). Preferably find one with a different colored trim around the edges which you will fold over on the top of the dress.
2. To create the patterns for the 3 panels of the dress, you can work off of a simple dress pattern that fits your size. The two front panels will need to overlap each other by about 2 inches. Make sure to include the seam allowance in your pattern (about 1/4" to 1/2")!
3. Spread the fabric out on a flat surface and pin your 3 panel patterns down side by side. Both front panels should have the trim on the top and one side, and the back panel should have the trim on the top edge



Royal Flush Cover Up Sewing Instructions: (continued)



4. Cut out your panels. Note where your darts are: 2 in the back panel, and 1 for the bust on each front panel (the darts are optional, as you will also be using elastic for fitting in the waist, but they help create a slimmer fit and reduce the bulkiness of the top portion of the dress).
5. Sew your darts first (optional) then pin the panels together (both front panels connected to the back panel with the front center open). Sew your panels together, making sure to align the top trim properly. Only sew halfway up the trim, as you will need to switch the seam to the opposite side in order to fold the top over without showing the seam. Once the panels are sewn together, flip to the outside of the dress, and sew the rest of the trim together.
6. Next comes the elastic. Measure the length of your elastic by wrapping it around your torso at your high waist (about 2 inches above your belly button). Make sure it is snug, but not too tight...you want your dress to be comfortable! Mark the length that you'll need, and cut the elastic.
7. Lay your dress flat with the inside facing up. Pin each end of the elastic to the outer edge of each front panel just before it hits the inside of the trim edge (this way the trim will remain flat, while the rest of the fabric gathers around the waist). Once both ends of the elastic are pinned, start pinning the rest down to the dress, working from the center out for even spacing. You'll need to stretch the elastic out to lay flat on your dress (I use my knees to hold the elastic and dress down as I pin it in place...so it's helpful to do this part on the floor, preferably on carpet or a rug). Once your elastic is properly pinned, sew it to the dress. Use both hands to stretch the elastic/dress out flat as you sew.
8. To shape the top of the dress, start at the back of the dress and fold your trim over in half. Press your fold with a hot iron as you go to keep it in place. Continue the fold to the two front panels and increase the fold as you get close to the center of the dress. So in the back, your fold should be straight across, and your front panel folds should be angled down so that the inside edge of the trim hits the fold at the outside edge of each front panel. This will create the slight sweetheart style of the neckline. Press your folds in place with the iron.
9. Next wrap the dress around you, overlapping the front panels and mark where you would like to place your snap closures. Once marked, hand sew your snaps in place.
10. Lastly, you'll need to sew your hemline. Once you decide what length you would like your hemline (mine was just above the knee), pin it down and use a zig-zag stitch (or any fun type of stitch) to sew it in place.