



PFAFF®

hobbylock™ 2.0

Lycra top

You need

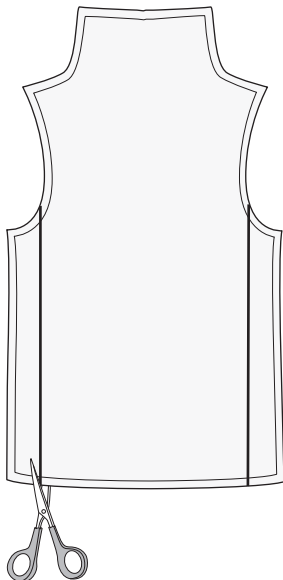
- PFAFF® hobbylock™
- Vogue pattern 7799 view B
- Pink lycra fabric according to pattern
- Pink textured lycra fabric 6" x 16" (15 x 40 cm)
- 3 ¼ yards (3 m) turquoise silk ribbon, 1/8" (3 mm)
- 4 spools pink overlock thread
- Dark blue rayon embroidery thread
- 3 spools medium blue rayon embroidery thread
- Pins
- 1 small safety pin

Paper pattern

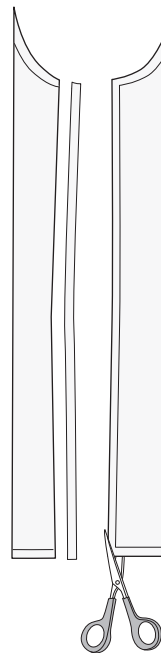
Cut out the required pattern pieces from the top pattern. Check your pattern to be sure seam allowances are included. If not, add 5/8" (1.5 cm) seam allowance.

Make the following adjustments to the pattern:

1. Cut away 2 ½" (6,5 cm) in each side seam.

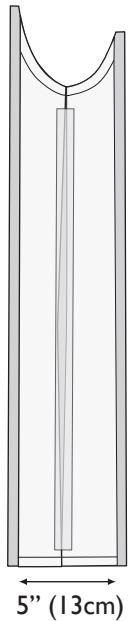


To make the new side insert pattern piece: cut away the side 5/8" (1.5 cm) seam allowance, from each piece.



Tape together the side seams to make the new side insert pattern piece. Add a 5/8" (1.5 cm) seam allowance to the new side seams.

2. Shorten sleeve pattern to desired length.



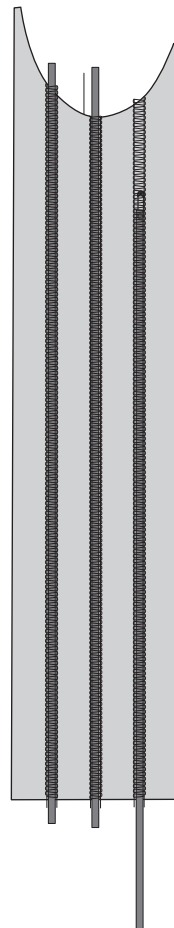
Cutting Instructions

From pink lycra fabric cut out front, back and sleeve pattern pieces. From the textured pink lycra fabric cut out 2 side insert pieces.

Embellishing

Thread your overlock with medium blue embroidery thread. Refer to your User's Guide for instructions on how to set up for a 3 thread flatlock seam. Sew three vertical seams evenly on the side insert pieces. Divide the silk ribbon in 6 even pieces. Thread the silk ribbons in the flat lock seam with the small safety pin.

Secure the ribbons with a straight stitch at the upper and lower edge.



Sewing

Set up your overlock for a 3 thread overlock seam, thread the machine with dark blue embroidery thread. Sew the insertions between the front and back piece, wrong sides together. Finish sewing the top according to the sewing instructions in the pattern.

