

Creative Scroll Cushion

Supplies:

Turquoise Satin $\frac{5}{8}$ yd (0.55 m) cushion top

Turquoise Velvet $\frac{7}{8}$ yd (0.75 m) cushion

White Cotton $\frac{3}{4}$ yd (0.7 m) cushion form

Cotton Batting $\frac{3}{4}$ yd (0.7 m) cushion form lining

Rayon Thread

Bobbin Thread

Sewing Thread

Invisible Zipper 22" (55 cm)

Tear-away stabilizer

Sulky Totally Stable

Fusible Webbing

Tracing Paper

Water soluble marker

Polyester stuffing

Sensormatic/Embroidery Foot 820671-096

Invisible Zipper Foot 820479-096

$\frac{1}{4}$ " Right Guide Foot 820541-096

Open-Toe Appliqué Foot,
9mm with IDT 820213-096

1 Cutting Instructions:

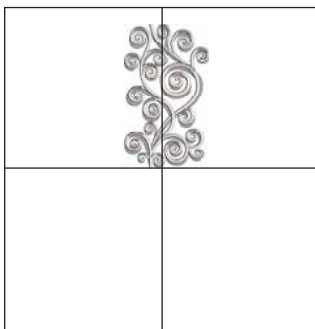
- Tracing Paper: 1 – 20" (50 cm) diameter circle pattern piece
1 – 16" (40 cm) diameter circle pattern piece
- Turquoise Satin: 1 – 20" (50 cm) square
- Turquoise Velvet: 1 – 22" (56 cm) square cut in half (cushion back)
1 – 20" (50 cm) circle (cushion front)
2 – 2 ½" (6.5 cm) strips x width of fabric (cushion side)
- White Cotton: 2 – 20" (50 cm) circle (cushion form)
2 – 2 ½" (6.5 cm) strips x width of fabric (cushion form side)
- Cotton Batting: 2 – 20" (50 cm) circle (cushion form lining)
1 – 2 ½" x 62" (6.5 x 159 cm) strip (cushion form side lining)

2 Assembly Instructions:

1. On the turquoise satin 20" (50 cm) square mark the center cross point with a watersoluble marker.

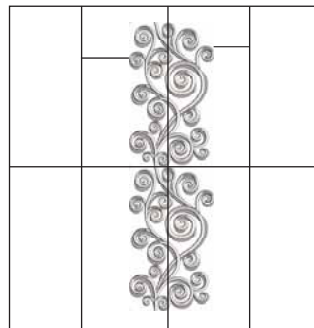
2. Hoop stabilizer in the 240 x 150 hoop creative MASTER HOOP. Position the light grey colored scroll in the top half of the square. Using Precise Positioning to center the design on the center marked line and place the bottom of the design on the horizontal line. Baste in place.

3. Embroider the design.

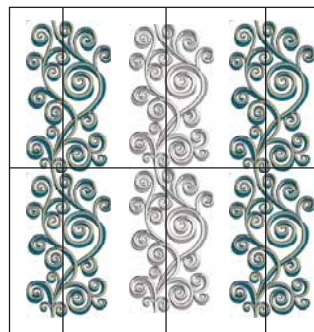


4. Hoop another piece of stabilizer and position another light color scroll in the bottom half of the square, use Precise Positioning to match the connecting stitches. Baste in place and embroider.

5. With the water soluble marker draw two vertical lines 3 ¼" (8 cm) on each side of the first vertical line. They will become the vertical center lines for your next set of embroidered scrolls.

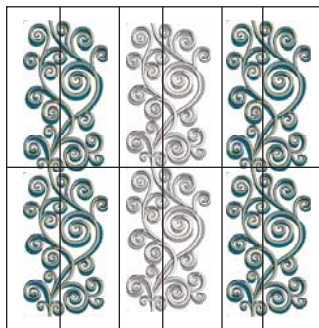


6. Hoop a piece of stabilizer and position the turquoise scroll as illustrated and embroider. Repeat for the remaining 3 turquoise scrolls.



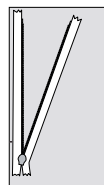
7. Remove from the hoop and remove the stabilizer.

8. Iron Totally Stable stabilizer on the back of the embroidered square.
9. With the water soluble marker draw a vertical line centered between the embroidered scrolls.

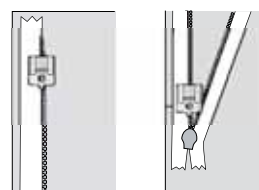


10. Attach the Open-toe appliqué foot and select a decorative stitch and stitch along the marked line. Remove the stabilizer.
11. Fuse fusible webbing to the wrong side of the embroidered square.
12. Center the 16" (40 cm) diameter circle pattern piece on the embroidered square and cut out the circle.
13. Remove the paper from the fusible webbing and center the embroidered circle on the 20" (50 cm) circle of turquoise velvet. Press in place.
14. Fuse Totally Stable stabilizer onto the wrong side of the turquoise velvet.
15. Thread your sewing machine with turquoise rayon thread on top and bobbin thread in the bobbin. Satin stitch around the turquoise satin circle to attach it to the turquoise velvet circle. Remove the stabilizer.
16. Zipper Insertion: Use the cushion back pieces 2 – 11" x 22" (28 x 56 cm) turquoise velvet. Thread your sewing machine with sewing thread in the top and bobbin, attach the invisible zipper foot and select a straight stitch.
17. Open the zipper and place the right half of the zipper onto the 22" (56 cm) right cushion back piece, with the right sides of the zipper and fabric together. The coil should lie on the 1/4" (6mm) seam line, starting 5/8" (1.5 cm)

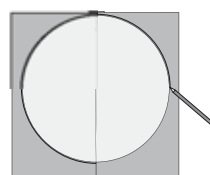
below the upper edge of the fabric. Pin in place. The bottom of the zipper will extend beyond the fabric.



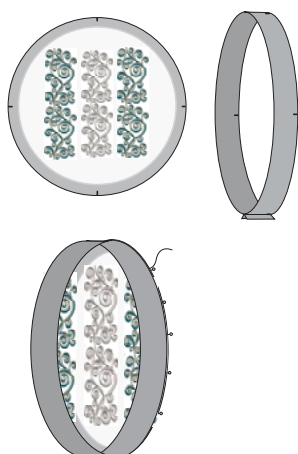
18. Carefully press the teeth slightly to the right and lower the zipper foot, so that the coil lies in the groove to the right of needle.
19. Starting at the top, sew the zipper in place, stopping at the end of the fabric. Tie-off the end of the seam. Close the zipper.
20. Place the second zipper tape on the left side of the cushion back piece. Make sure that both coils and fabric edges are level.
21. Pin the zipper in place. Open the zipper.



22. Carefully press the teeth slightly to the left and lower the zipper foot, so that the coil lies in the groove to the left of the needle.
23. Starting at the top, sew the zipper in place, stopping at the end of the fabric. Tie-off the end of the seam. Close the zipper.
24. Place the 20" (50 cm) circle pattern piece on the back piece. Line up the top edge of the pattern with the zipper pull and center the zipper. Draw the circle on the back piece. Before cutting out the circle, sew over the end of the coil with a straight stitch to act as a zipper stop 1/4" (6 mm) up from the drawn line. Stitch across the top to join the fabric pieces together, for ease of sewing into the seam of the cushion. Cut out the circle. Open the zipper enough to turn the cushion through after the top is sewn on.



25. Attach the $\frac{1}{4}$ " Right Guide Foot. Seam together the $2\frac{1}{2}$ " (6.5 cm) strips using a $\frac{1}{4}$ " (6 mm) seam allowance. Press the seam open. Cut the strip into a 62" (159 cm) piece. Sew the cushion side strip into a circle.
26. Fold the cushion side into quarters and mark those points. Fold the cushion top into quarters and mark those points. Match the quarter points and pin the top and side pieces with right sides together. Sew using a $\frac{1}{4}$ " (6 mm) seam allowance.
31. Fold the side piece into quarters and mark those points. Fold the circles into quarters and mark those points. Match the quarter points and pin the circles and side pieces with right sides together. Sew using a $\frac{1}{4}$ " (6 mm) seam allowance. Leave an opening for turning.
32. Stuff the cushion with the polyester stuffing. Stitch the opening closed.
33. Open the zipper in the cushion back and insert the cushion form.



Finished!

27. Fold the cushion back into quarters and mark those points. Match the quarter points and pin the back and side pieces with right sides together. Sew using a $\frac{1}{4}$ " (6 mm) seam allowance.
28. Turn right side out.
29. Cushion Form is made up of the following pieces.
 - Cotton 2 – 20" (50 cm) circle
 - 2 – $2\frac{1}{2}$ " (6.5 cm) strips x width of fabric
 - Batting: 2 – 20" (50 cm) circle
 - 1 – $2\frac{1}{2}$ " x 62" (6.5 x 159 cm) strip

Place the cotton 20" (50 cm) circle on top of the batting circle and baste together. Repeat for the remaining circle.
30. Seam together the $2\frac{1}{2}$ " (6.5 cm) cotton strips using a $\frac{1}{4}$ " (6 mm) seam allowance. Press the seam open. Cut the strip into a 62" (159 cm) piece. Sew the side strip into a circle. Stitch the batting to the side strip butting up the batting ends.