

**PFAFF**



**ambition**<sup>TM</sup> Denim Jacket

## Supplies

- PFAFF® ambition™ sewing machine
- Included Pattern: Kwik Sew 2895
- Black denim fabric
- Sewing thread in matching color
- 30 wt cotton thread for the blue topstitches
- Topstitch Needle 90, #620071496 or a Denim Needle #620071996
- Jeans buttons

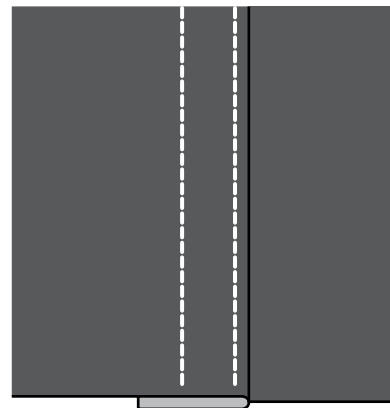


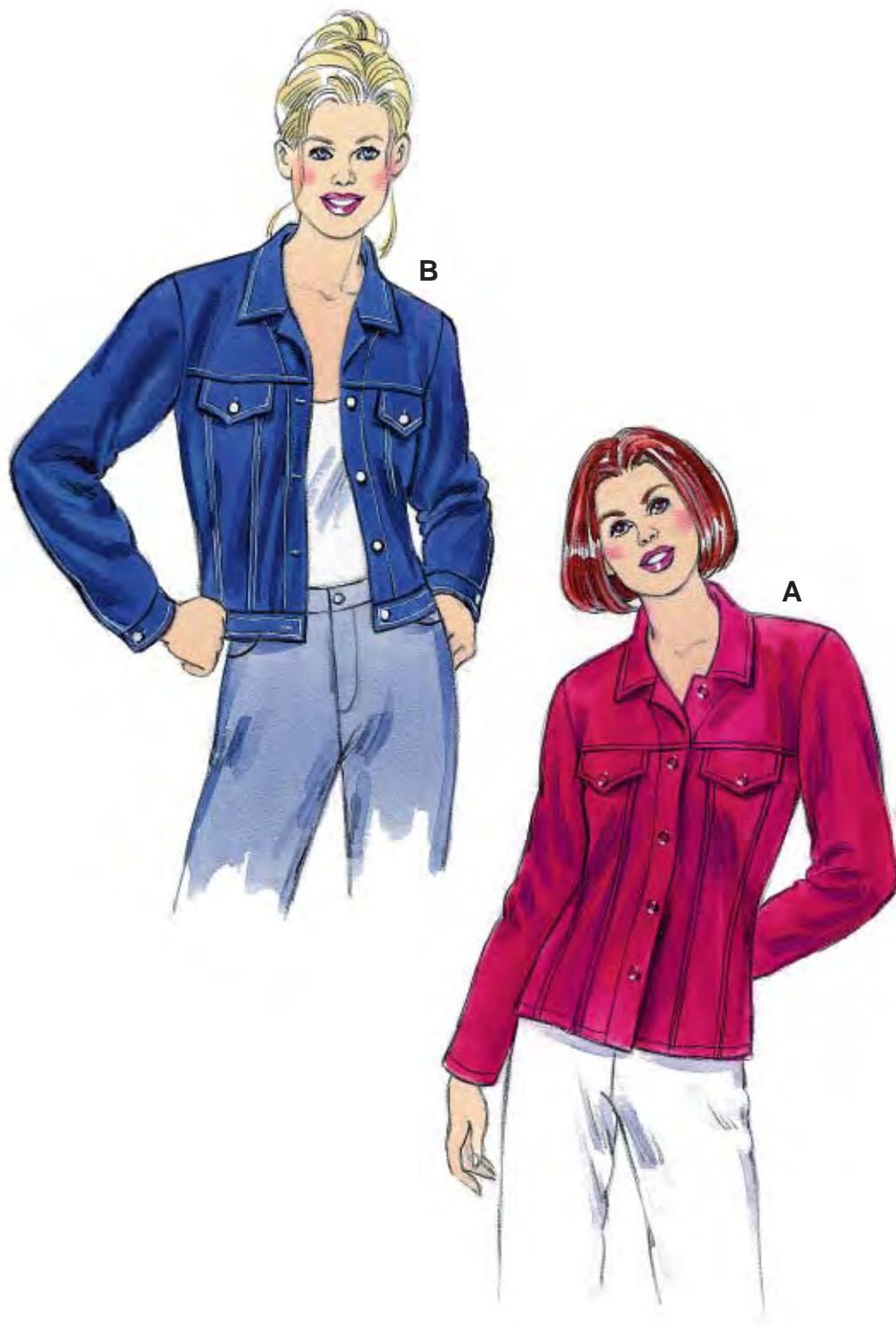
## Tip!

- To create a more personal look to your jacket you can play with the denim using both sides of the fabric. We have sewn the lower front and back pieces with the wrong side of the fabric facing out.
- Use the Eyelet Buttonhole when sewing the buttonholes.

## Topstitches

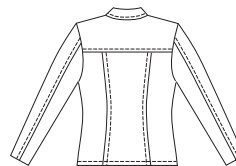
- Sew the pieces right sides together using a 1/4" (1.5 cm) seam allowance.
- Thread the machine with 30 wt blue cotton thread both on top and bobbin thread.
- Use a Topstitch Needle 90 which has a larger eye, to accommodate the 30 wt cotton thread.
- Select the straight stitch and set the stitch length to 3.5.
- Press the seam allowance to the side where you will sew the denim topstitches and turn the fabric right side up.
- Sew the first stitch 1/8" (2 mm) from the edge.
- Sew the second stitch 3/8" (7 mm) from the first stitch.



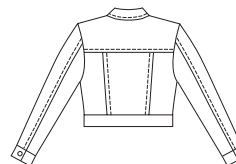


Misses' jackets have front and back yokes, three panel front and back, pockets in yoke seams with flaps and topstitching details. View B has waistband and cuffs.

VIEW A Back



VIEW B Back



**KWIK•SEW®**  
price **2895**

**DESIGNED FOR MEDIUM WEIGHT WOVEN FABRICS**  
Suggested Fabrics: Cotton, cotton types, denim, twill, gabardine, linen

**MISSSES' JACKETS**  
Sizes: XS-S-M-L-XL

Size	XS	S	M	L	XL	
<b>Finished Length at Center Back</b>						
View A	21 3/4 (55)	22 1/2 (57)	23 1/4 (59)	24 1/4 (61)	25 1/4 (64)	" (cm)
View B	19 (48)	19 1/2 (49)	20 (51)	20 1/2 (52)	21 1/4 (54)	" (cm)
<b>Material Required:</b> Fabric requirement allows for nap, one-way design or shading. Extra fabric may be needed to match design or for shrinkage.						
<b>Fabric 60" (152 cm) Wide</b>						
View A	1 3/4 (1.60)	1 3/4 (1.60)	1 3/4 (1.60)	1 7/8 (1.75)	1 7/8 (1.75)	yd (m)
View B	1 5/8 (1.50)	1 3/4 (1.60)	1 3/4 (1.60)	1 3/4 (1.60)	1 3/4 (1.60)	yd (m)
<b>Fabric 45" (115 cm) Wide</b>						
View A	2 1/8 (1.95)	2 1/8 (1.95)	2 1/4 (2.10)	2 3/8 (2.20)	2 3/8 (2.20)	yd (m)
View B	2 1/8 (1.95)	2 1/8 (1.95)	2 1/4 (2.10)	2 3/8 (2.20)	2 3/8 (2.20)	yd (m)
<b>Fusible Interfacing 24" (60 cm) Wide</b>						
View A	3/4 (0.70)	3/4 (0.70)	3/4 (0.70)	3/4 (0.70)	3/4 (0.70)	yd (m)
View B	1 (0.95)	1 1/8 (1.05)	1 1/4 (1.15)	1 3/8 (1.30)	1 3/8 (1.30)	yd (m)
<b>Notions:</b> Thread. VIEW A: Seven 5/8" (15 mm) buttons. VIEW B: Nine 5/8" (13 mm) buttons.						