



“Baby’s Room Valance”



Whether you’re purchasing a valance, or make one from a pattern, it will become more interesting with the addition of embroidery. These playful appliqué designs were taken from the Ellisimo sewing and embroidery machine from Baby Lock. Instead of embroidering directly on the valance, individual blocks were embroidered and sewn to the front of the valance.

Skill Level: Easy

Created by: Kathy Isbell, for Baby Lock

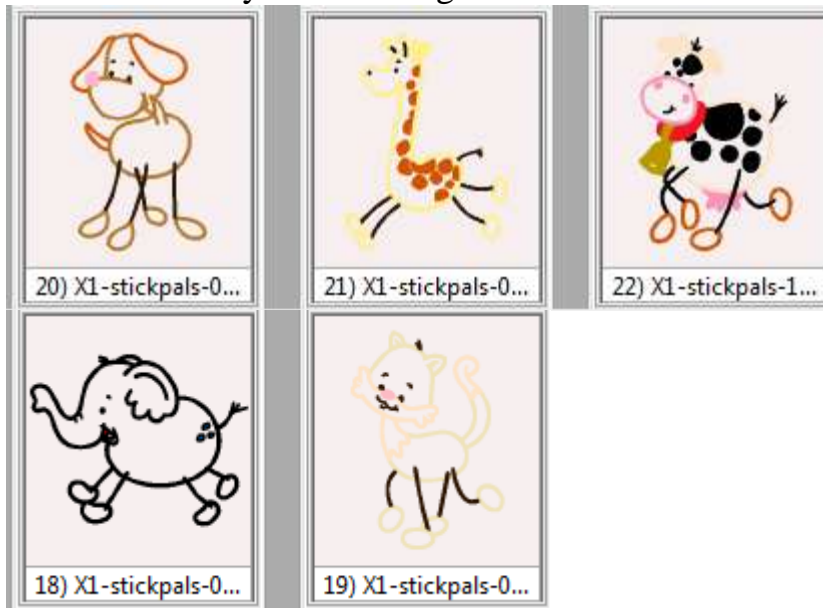
Supplies:

Baby Lock® Ellisimo sewing and embroidery machine
Studio III from Designer’s Gallery
Thumb drive

Temporary Spray Adhesive
 Baby Lock Tear-Away Soft Stabilizer
 Edge joining foot
 Purchased pattern or purchased valance
 Basic sewing and embroidery supplies
 Assorted fabric for the appliqués
 Rotary cutter and cutting mat

Instructions

1. With the Ellisimo machine powered up click on Embroidery/Edit/Exclusives/Appliqué and retrieve the following designs individually. You can use all of the designs or use any number in any combination of your choosing.



2. Attached the thumb drive to the machine in the top USB slot.
3. Save the designs to the drive. The designs will be saved in the .phc file format.
4. The appliqué designs and the blocks were sewn and embroidered in contrasting colors. To change the colors in the designs from the original



colors, open Studio II from Designer's Gallery and select the

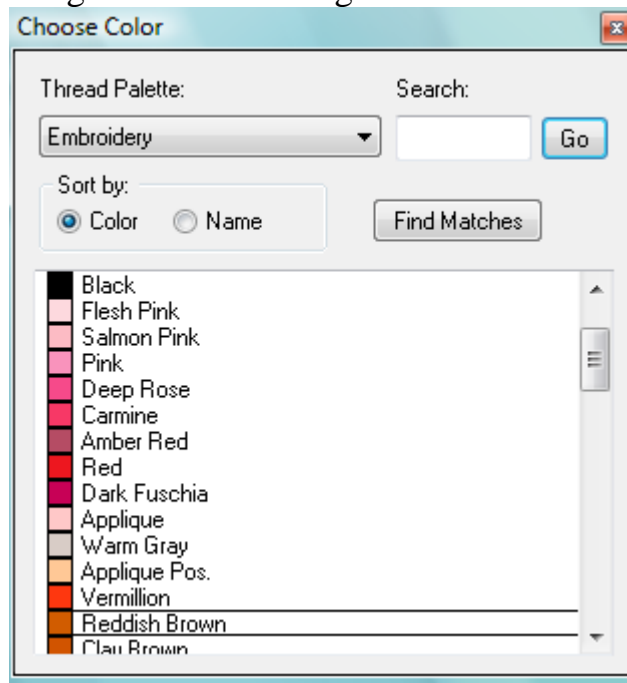



ColorWorks icon on the top toolbar. The color sequence for the design indicates appliqué position and appliqué material for the first two colors. It isn't necessary to change those colors, but you will change color numbers 3, 4, and 5 to the thread colors you want in your design so that they coordinate with the purchased valance. Click on the Change



Colors icon. When the icon is selected, a drop down box opens. Click on the color number to be changed and select a new color from the list

and click on it. The color of that section has now changed. Do the same thing for the remaining colors.



5. Click on the Exit & Save  icon. When the dialog opens click on Exit. This will send the design back to the original workspace.
6. Attach a thumb drive to a USB port on the computer.
7. Left click and drag the customized designs to the “E” drive. This is the drive that my computer as assigned; your thumb drive may be different.
8. Repeat these steps for all of the designs that you choose to use on your valance.

At the Embroidery Machine:

1. Hoop the stabilizer along with the fabric that is cut larger than the hoop.
2. Merged the design onto the embroidery machine’s workspace, embroider the design using the new thread colors.
3. Embroider additional designs until you have the desired number completed.
4. Once the desired number of blocks is complete, press under ¼” seams around each block.
5. Use temporary spray adhesive to hold each block in place on the valance and pin in place.
6. Attach the edge joining foot to the sewing machine.
7. Adjust the needle position so that the line of stitching catches the blocks edge. Stitch the blocks to the valance.

These same designs can be used to create a complete baby room ensemble as shown in the photograph. Place the designs on bumper pads, wall hanging or create a beautiful quilt just to name a few.



For other exciting projects like this one, visit our Web site at www.babylock.com