



## Lettering & Crystals Techniques

Based on this beautiful project from [Sew4Home.com](http://Sew4Home.com)

[DIY Wedding Sparkle with Artistic Crystals: Bridesmaid Clutch with Crystal Initial](#) (below)



Lettering is a perfect showcase for crystals, whether it's a embellished monogram, your name, or a favorite saying. Easy to create, the Artistic Suite uses the built in fonts from your computer. Sew4Home used the font "Wendy" from A-Z Fonts for their samples, you can find it [here](#).

Software Accessories  
Artistic Suite V6  
Dongle  
External Mouse  
Digital Cutter such as Silhouette Cameo Cutter

USB Memory Stick

Additional Supplies

Template Material

Backing Board

Transfer Tape

Rhinestones in assorted sizes and colors

Plastic Tray

Positioning Brush

Artistic Press (optional) or Iron and Ironing Board

Silicon Press Sheet

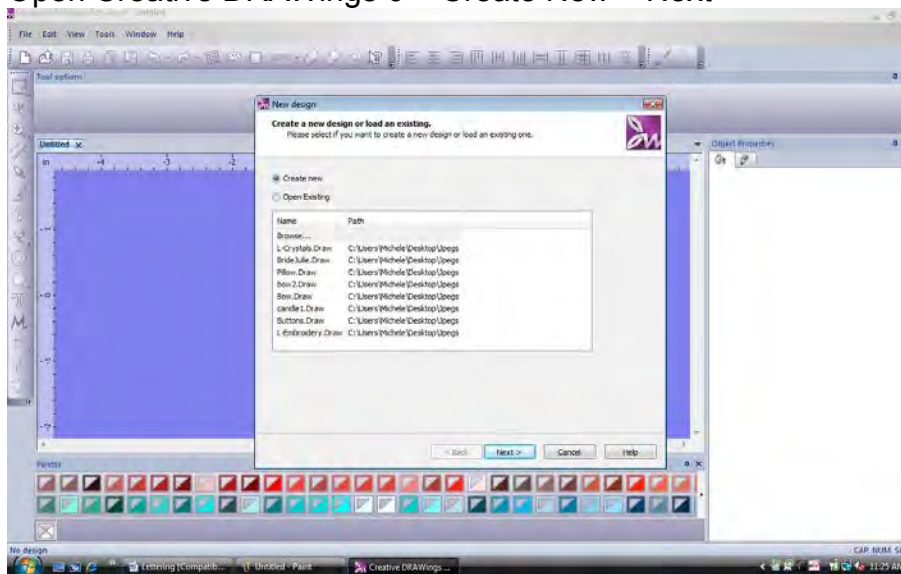
Press Cloth or Handkerchief

Bridesmaid's Clutch

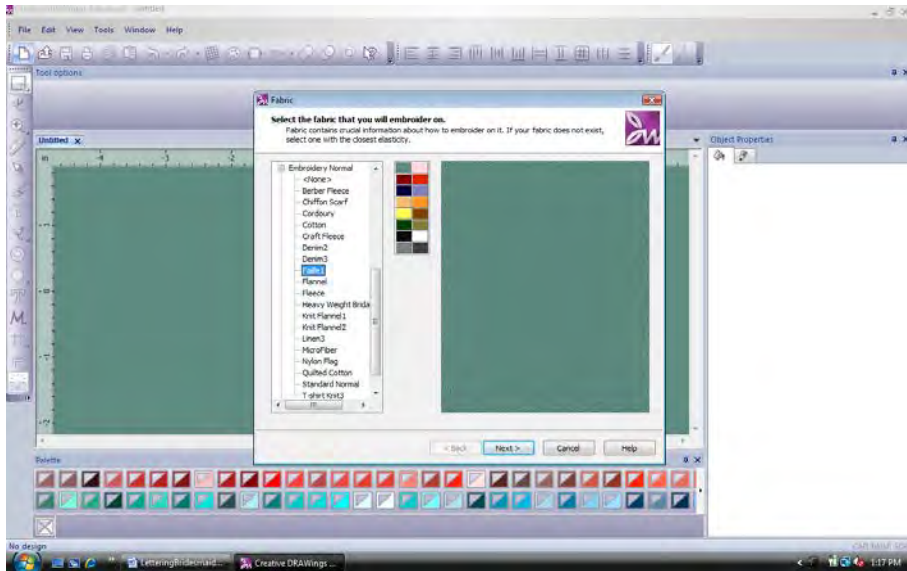
Swarovski Crystals, Crystal AB, size SS16

Bridesmaid's Clutch

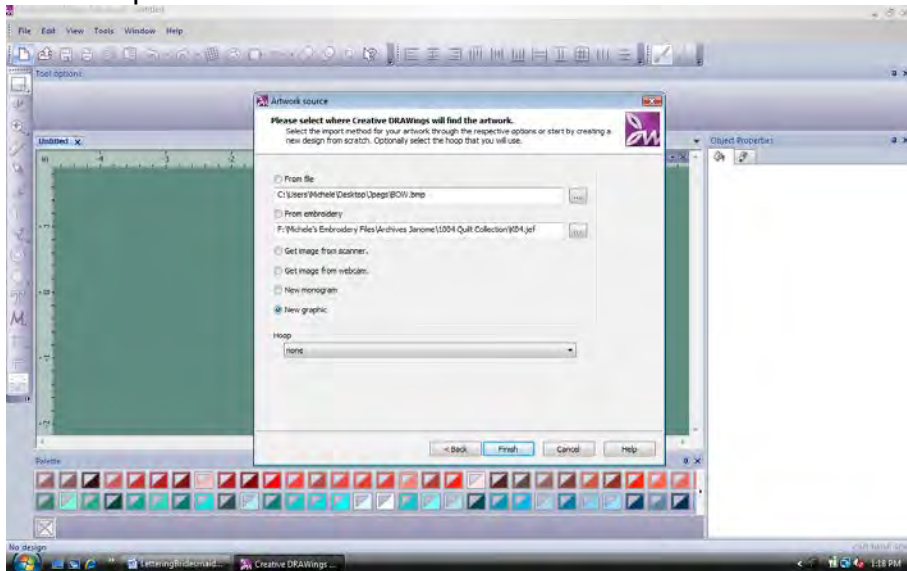
1. Open Creative DRAWings 6 > Create New > Next >



2. Select Faile 1 > Next >



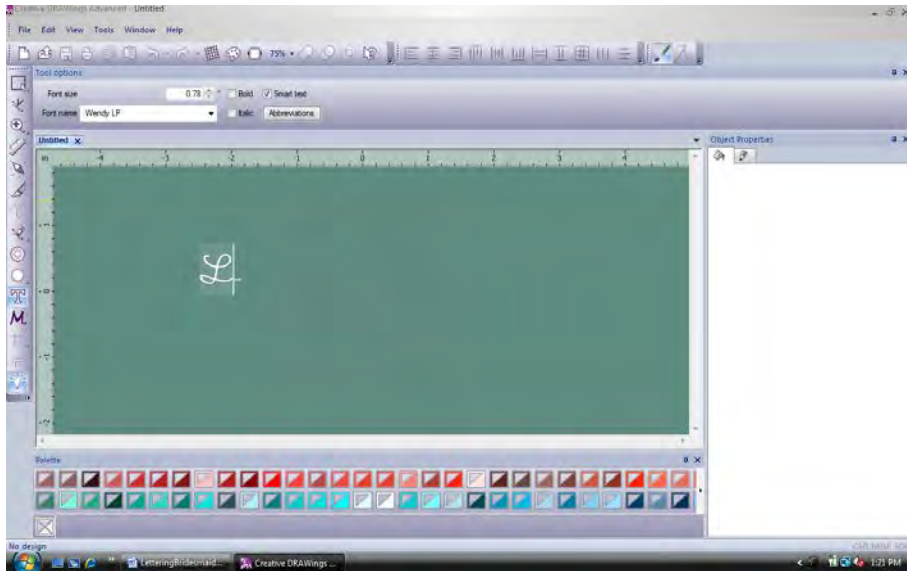
### 3. New Graphic > Finish



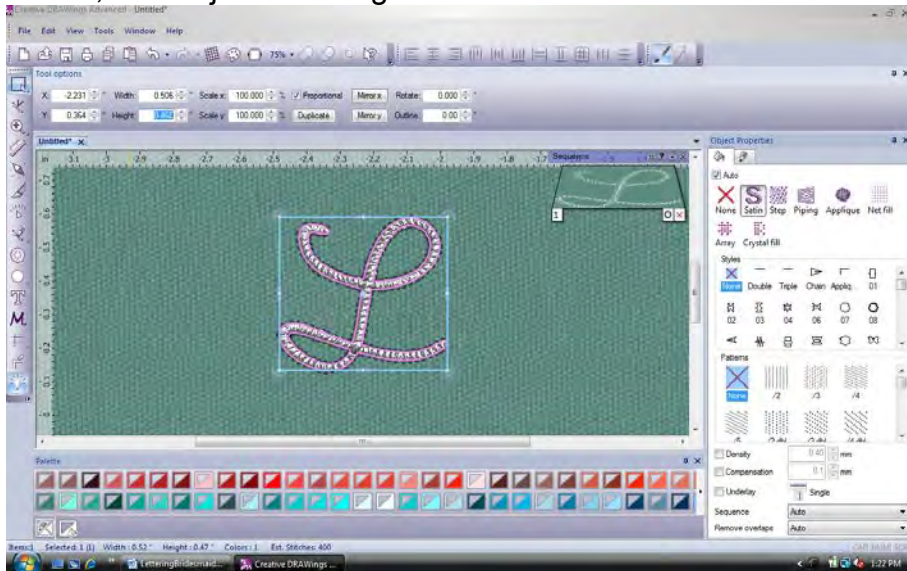
### 4. Select Text tool.



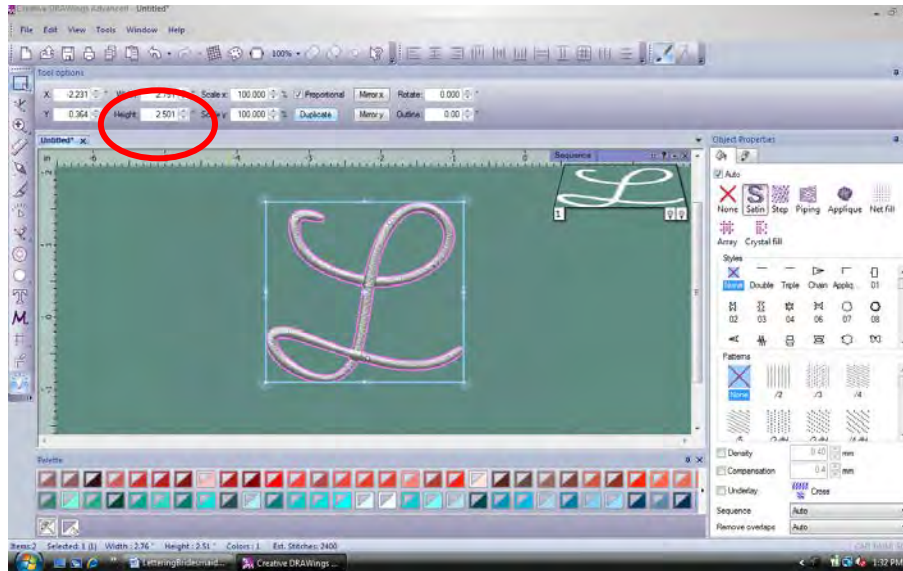




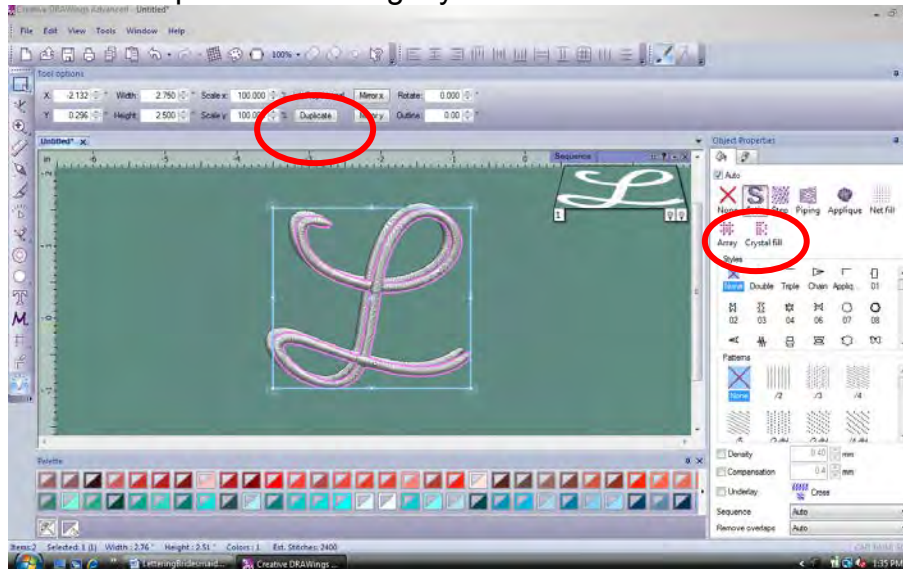
7. Select, and adjust the Height to 2.5. Enter.



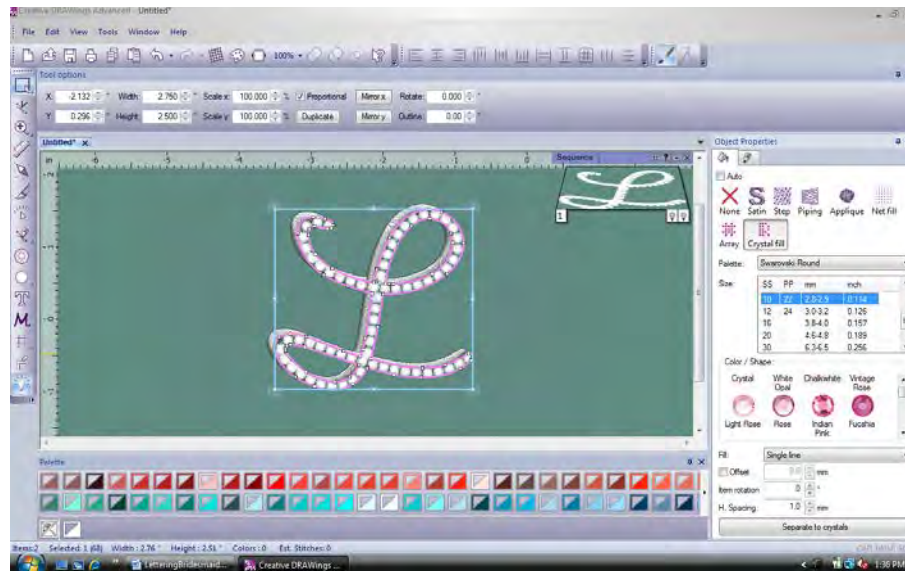
8. Create a second letter by clicking Duplicate.



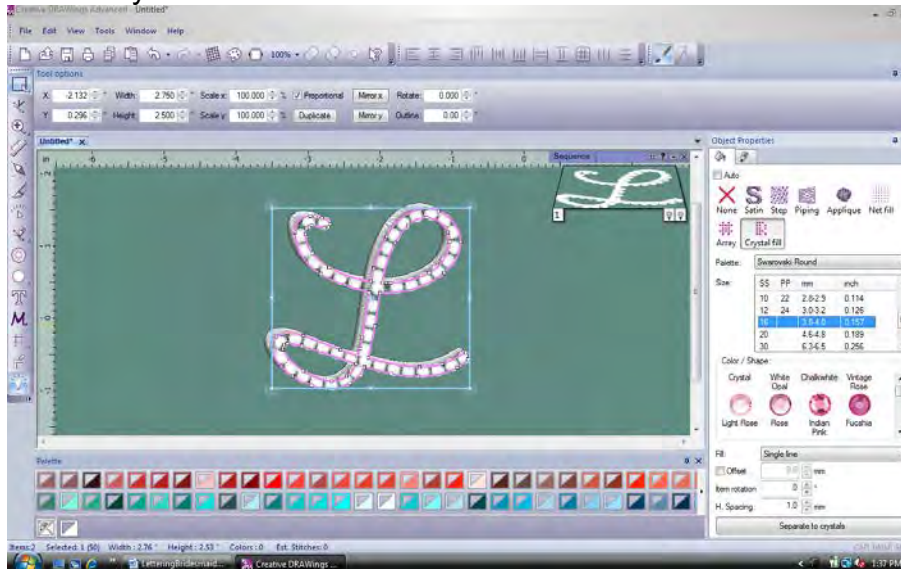
9. Move the duplicate letter slightly to the side of the first letter to create a 'shadow'.



10. Change the Fill to Crystal.

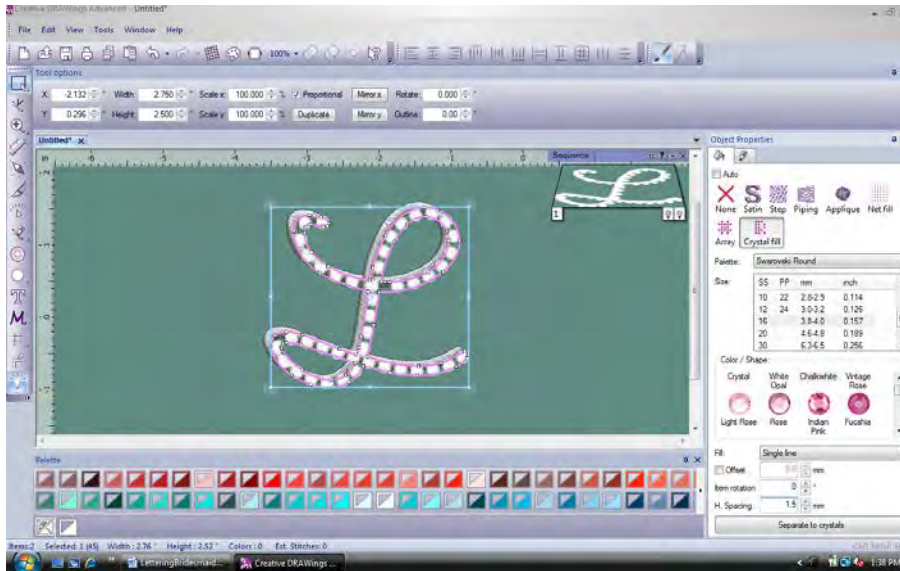


11. Select crystal size 10.

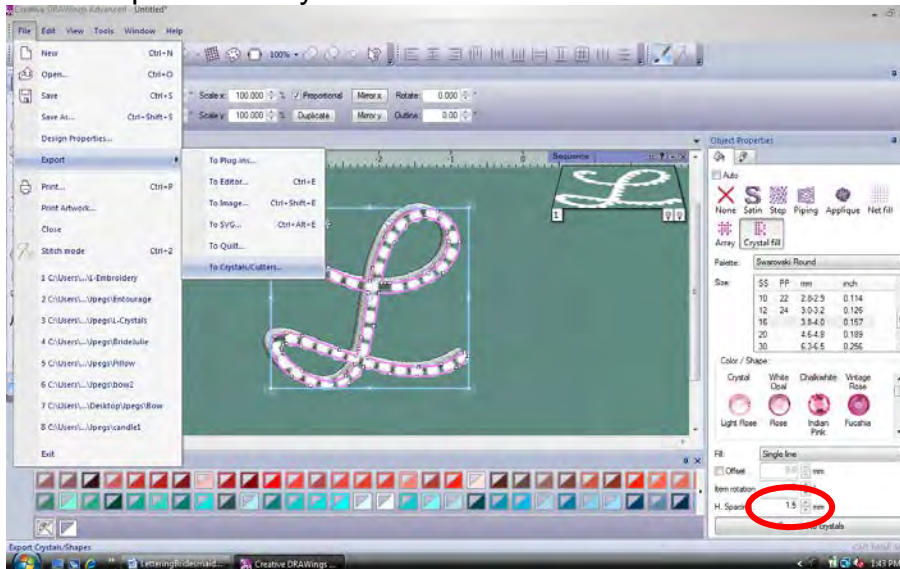


12. Adjust the Spacing to 1.5. Enter.





### 13. File > Export > To Crystals/Cutters



14. Load the template material into the cutter. Cut template.

15. Save the design as a JEF file to a USB Memory Stick.

### Applying the Crystals

For additional step-by-step instructions and photos, take a look at the [Sew4Home tutorial](#) (below) as well as the [Sew4Home overview on crystal application](#).

1. Peel the template material from the paper backing and adhere the template to template backing.
2. Place the template in a tray, and pour a generous amount of crystals over the template. Use the positioning brush to move the crystals from side to side over the template, and just like magic! The crystals position themselves in the template holes right side up.



3. Cut a piece of transfer tape the size of the template. Position the tape over the crystals and smooth in place. Gently lift the tape with the crystals adhered.
4. Embroider the single letter on the clutch, positioning it as desired before construction.
5. Place the silicon sheet on the Artistic Press or on the ironing board.
6. Place the embroidery on the silicon sheet.
7. Position the crystal letter over the embroidered letter, so that it creates a shadow effect. Cover with a press cloth or handkerchief. Apply pressure with the Artistic Press or iron. Heat for approximately 40 seconds.

When using an iron, it is important to apply steady pressure WITHOUT moving the iron. This ensures that the crystals will stay in place during the bonding period.

Make one for each bridesmaid in the wedding party. The template and transfer tape can be reused over and over again!

## DIY Wedding Sparkle with Artistic Crystals: Bridesmaid Clutch with Crystal Initial

Editor: Liz Johnson  
Thursday, 07 June 2012 3:00



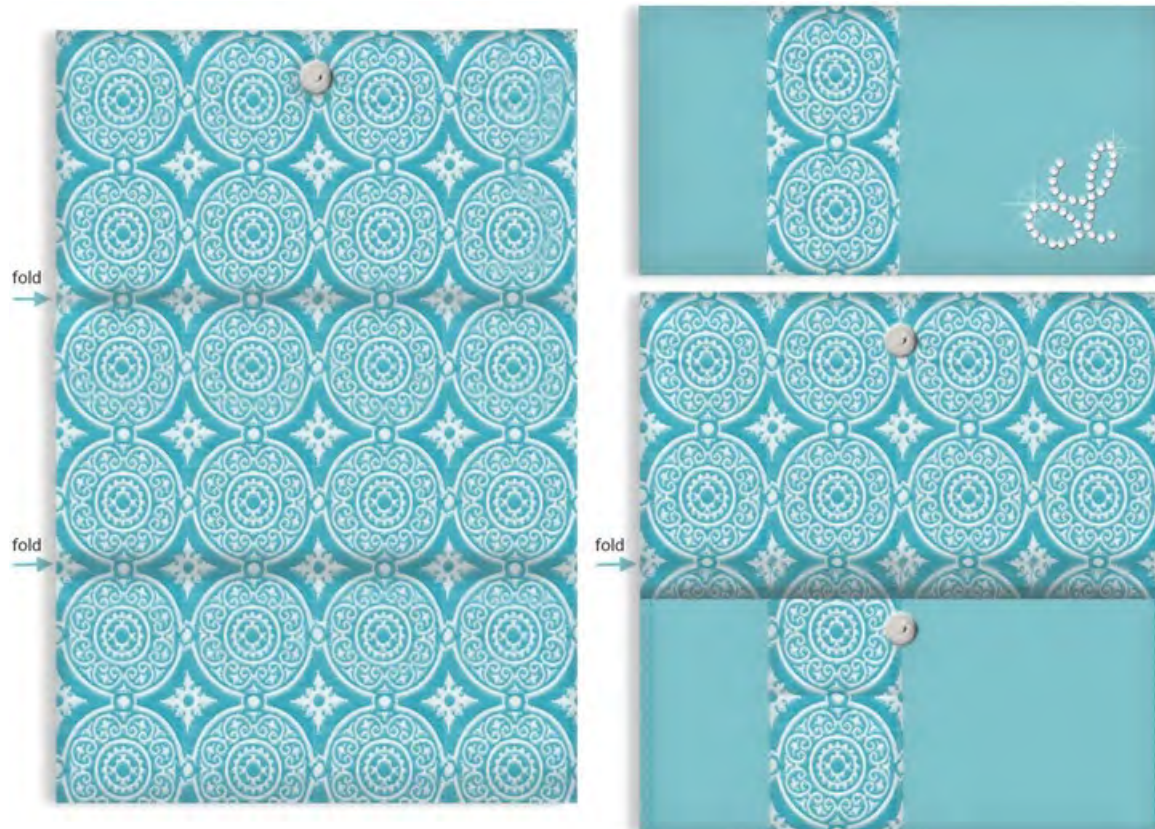
It's one of the hottest trends out there right now: matching clutches for the wedding party. Just the right size to carry a few important items to the wedding and reception, many brides are also using these little purses to hold special wedding day gifts for their girlfriends. We even saw some chatter out there about brides who've skipped traditional bridesmaid bouquets, choosing instead to put real or silk flowers on coordinated clutches and have the girls carry these down the aisle. The pictures we saw of wedding parties going with this new tradition were just adorable. A Google search on 'Bridesmaid Clutches' will bring up hundreds and hundreds of hits. We chose a simple envelope clutch design we've used before here on S4H. The "bling" is an embroidered initial outlined in crystals on the outside of each clutch, using the [Artistic](#) integrated system of crystals, software, cutters and presses. In this way, all the purses can match the bride's color scheme, yet each one will be easily identifiable by its owner.

All of our **DIY Wedding Sparkle** projects are structured to provide *inspiration* rather than act as full sewing and software tutorials. Each article will describe the basics of how to make the base project, but not in the step-by-step detail you may be used to if you're a regular S4H visitor. However, as we mentioned above, this particular project is based on an existing tutorial, so no working without a net on this one!

Once you're hooked on the idea of crystals, and have your very own [Artistic System](#), you'll be able to visit the [Artistic website](#), where detailed step-by-step crystal design and application tutorials will be available as free downloads for our project ideas, including exactly how to set up an initial in the software then outline it with crystals. These free .PDF files will be posted to the [Artistic website](#) soon after the conclusion of our S4H series.

# Construction notes

We chose two home décor weight fabrics for our clutches: a pale aqua for the exterior, to match our series color scheme, and a coordinating aqua and white medallion print, which we used for the interior and fussy cut for the exterior accent band.



The construction follows our original tutorial: [ScrapBusters: Clean and Simple Clutch](#). The only change is our addition of the embroidered initial with its crystal outline. This is applied after the three exterior bands (the two solids and the fussy cut print) have been seamed, but while the exterior panel is still flat.

Our initial was positioned right side up in the bottom right corner of the middle section, which means, when the clutch is folded closed, the initial shows on the back. It could also be positioned upside down in the upper left corner of the top section. In this scenario, when folded closed, the initial will finish right side up in the corner of the front flap.

The width of our wedding clutch is approximately 14", about the same as our [Clean and Simple Clutch](#), but the height finishes nearly 2" taller (6¾") when folded closed. This size was determined by the fussy cut of our medallion print. We wanted two full medallions to show on both the front and back and so adjusted our section heights accordingly.





## Embroidery and crystals

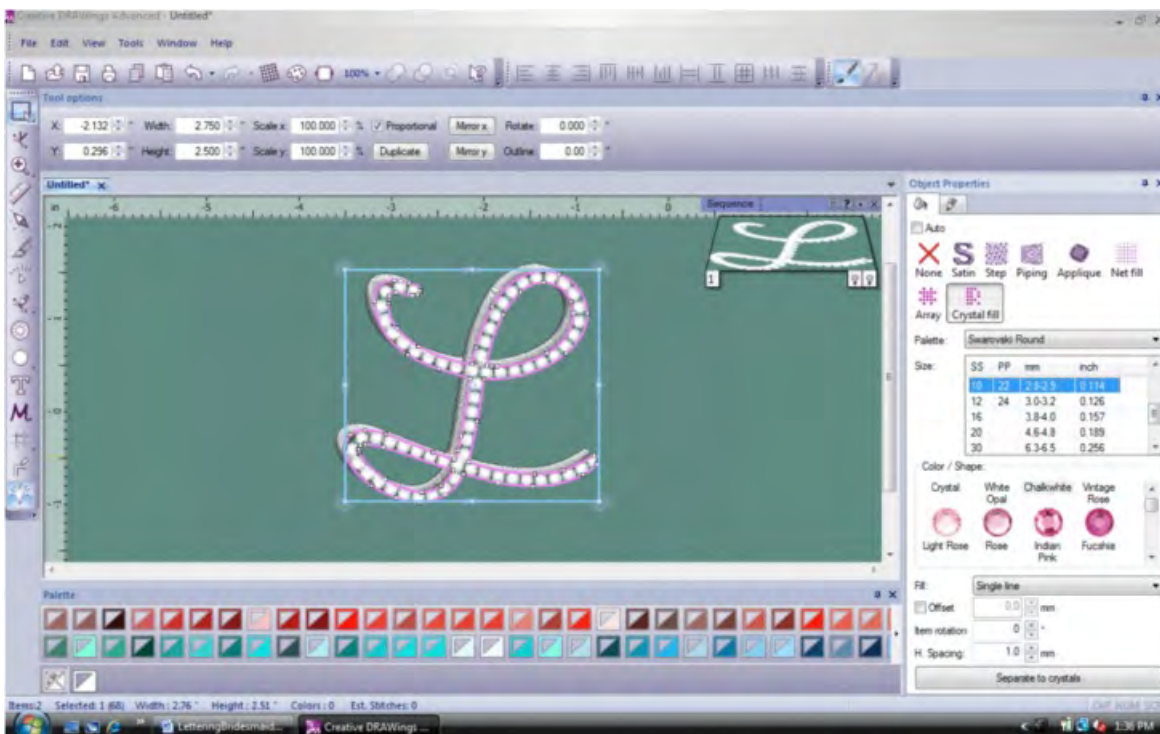
Our previous **DIY Wedding Sparkle** projects have focused on the use of only crystals. We're now moving up the creativity food chain by combining embroidery with crystals! To do this, we used the [Artistic Suite V6.0](#) software option.





The initial on the bridesmaid's clutch is the same font, Wendy, that we used for our [Dazzle Tees](#). We created the embroidery, and saved it as the appropriate embroidery file for our machine (a .JEF file for our [Janome Horizon Memory Craft 12000](#)). The software generates perfect lettering; it was a treat to work with.

We then applied the crystal line and created the crystal shadow.





## Tags:

- [DIY Wedding Sparkle](#)

[Interviews & Inspirations](#)

This project and patterns (if any) may be downloaded for personal use only. No electronic or printed reproduction permitted without the prior written consent of Sew4Home LLC.  
Copyright 2009-2015 Sew4Home LLC. All Rights Reserved.

---

**Source URL:** <http://www.sew4home.com/tips-resources/interviews-inspirations/diy-wedding-sparkle-artistic-crystals-bridesmaid-clutch>





## DIY Wedding Sparkle with Artistic Crystals: Bejeweled Buttons

Editor: Liz Johnson

Wednesday, 30 May 2012 3:00



Beautiful buttons down the back are one of the most popular accents for wedding gowns. After all, it's the back of the dress the audience is looking at throughout the ceremony! By adding crystals to a simple covered button, you create instant dramatic flair. We show you ours as a feature strip on a sheer over-the-shoulder capelet, but they'd be also be beautiful as a featured top and/or bottom button on the gown itself. And they'd be striking as matching accents on the groom's and groomsman's vests. Or, go beyond the world of weddings; these bejeweled buttons would fly off the virtual shelf as all-occasion fashion accessories.

Our base capelet is made from McCall's pattern 3033. We followed the basic pattern instructions to create the View B option in a pale ivory organza with accents of taupe silk dupioni. Chiffon would also be a lovely choice as an alternative to the organza and would increase the drape and swing of the capelet.

All of our DIY Wedding Sparkle projects are structured to provide inspiration rather than act as full sewing and software tutorials. We include the basics of how to make the base project(s), but not in the step-by-step detail you may be used to if

you're a regular S4H visitor.

Once you're hooked on the idea and have your very own [Artistic System](#), you'll be able to visit the [Artistic website](#), where detailed step-by-step crystal design and application tutorials will be available as free downloads for our project ideas, including today's capelet with its bejeweled buttons. These free .PDF files will be begin to be posted to the [Artistic website](#) at the conclusion of our S4H series.

We've also included a few handy links at the end of the article to project tutorials within our own S4H archives that will help with project construction.

Construction notes for the capelet

The McCall's 3033 pattern was a nice shape for the capelet, but (in true S4H fashion) we did make a few alterations. We lowered the neckline by 1" then finished the raw edge with a thin strip of silk dupioni as a banded facing. This facing application is shown in the pattern instructions.



We changed the capelet opening from the front to the back. To do this, we simply placed the center front pattern piece on the fold of the fabric. Then, we placed the center back pattern piece parallel to the selvage edge and cut along the center back.





We also added an accent band along either side of the back opening to form the button and buttonhole plackets for our DIY Wedding Sparkle: the bejeweled buttons.



The band was cut 3" x the length of the center back edge plus 1" for seams.

Sew the band to the center back, using a ½" seam. Turn under the opposite long raw edge ½" and press in place. Fold the band in half with right sides together. Sew the upper and lower ends with a ½" seam. For each side of the opening, turn the band right side out and press, making sure the folded edge covers the stitching line. Top stitch in place, catching all the layers.

### Crystal application notes for the buttons

We played with a number of different sizes of crystals, different spacing and simplified shapes when refining our button designs. In the end, we focused on two successful styles. The first was a software generated circle with a center stone added using the software's crystal tool. Then, we hand drew a heart shape and brought this art into the [Artistic Crystal's software](#). Again, there are tools within the software to allow you to adjust the line to get a smooth curve to which to apply the line of crystals. At this very small size, we found a shape filled with crystals wasn't as successful a design. It was too hard to get a recognizable sharp in such a small size, even with the smallest crystals. The design outlines were much better.



For the majority of our DIY Wedding Sparkle projects, we used the [Artistic Press](#) to heat set the crystals. But, for these little buttons, we used a standard home iron. The key to remember is to press straight down on the crystals without moving the iron (as with all the projects, you are using a pressing cloth). Hold for 20 seconds, then lift. If necessary, repeat for another area of the design. Moving the iron (as if ironing clothes) can result in the crystals shifting out of position.

If you haven't already, take a look at the first article in this series, [The Business of Bling](#), for an interesting step-by-step overview of the crystal design and application.

One more thing about covered buttons and crystals (or embroidered button accents for that matter). Your design must be a bit smaller than the finished size of button; you need a little extra room around the design in order to wrap the fabric to the back.



### Hints and Tips

If you are new to working with covered buttons, take a look at our tutorials. We show you the steps for both [Button Kit Covered Buttons](#) and [DIY Covered Buttons](#).

If you are new to working with sheer fabric, like the organza we used on the capelet, [check out our tutorial for some tips and tricks](#). Our Hostess Apron Series also has additional step-by-step instructions for many techniques, such as narrow hemming with sheers.