

# Simplicity®

*(The chances are you're  
never going to read me)*

## Owner's Manual

### ***FLASH***



# IMPORTANT SAFETY INSTRUCTIONS

---

When using an electrical appliance, basic precautions should always be followed, including the following:

## READ ALL INSTRUCTIONS BEFORE USING THIS APPLIANCE

**WARNING:** The manufacturer cannot accept responsibility for damage caused when the appliance is not used according to the instructions, or for uses other than those for which it was intended.

To reduce the risk of fire, electric shock or injury:

- Use only on dry, indoor surfaces.
- Do not leave appliance when plugged in. Unplug from outlet when not in use and before servicing.
- **WARNING: ELECTRIC SHOCK COULD OCCUR IF USED OUTDOORS OR ON WET SURFACES.**
- Like any appliance, do not allow to be used as a toy. Close attention is necessary when used by or near children.
- Use only as described in this manual. Use only manufacturer's recommended attachments.
- Do not use with damaged cord or plug. If appliance is not working as it should, has been dropped, damaged, left outdoors, or dropped into water, return it to your Authorized Simplicity Retailer for service.
- Do not pull or carry by cord, use cord as a handle, close a door on the cord, or pull cord around sharp edges or corners. Do not run appliance over cord. Keep cord away from heated surfaces.
- Do not unplug by pulling on cord. To unplug, grasp the plug, not the cord.
- Do not handle plug or appliance with wet hands.
- Do not put any object into openings. Do not use with any opening blocked; keep free of dust, lint, hair and anything that may reduce air flow.
- Keep hair, loose clothing, fingers, and all parts of body away from openings and moving parts.
- Do not pick up anything that is burning or smoking, such as cigarettes, matches or hot ashes.
- Turn off all controls before unplugging.
- Use extra care when cleaning on stairs.
- Do not use to pick up flammable or combustible liquids such as gasoline or use in areas where they may be present.
- Do not attempt to service the unit while appliance is plugged in.

## IMPORTANT SAFETY INSTRUCTIONS

---

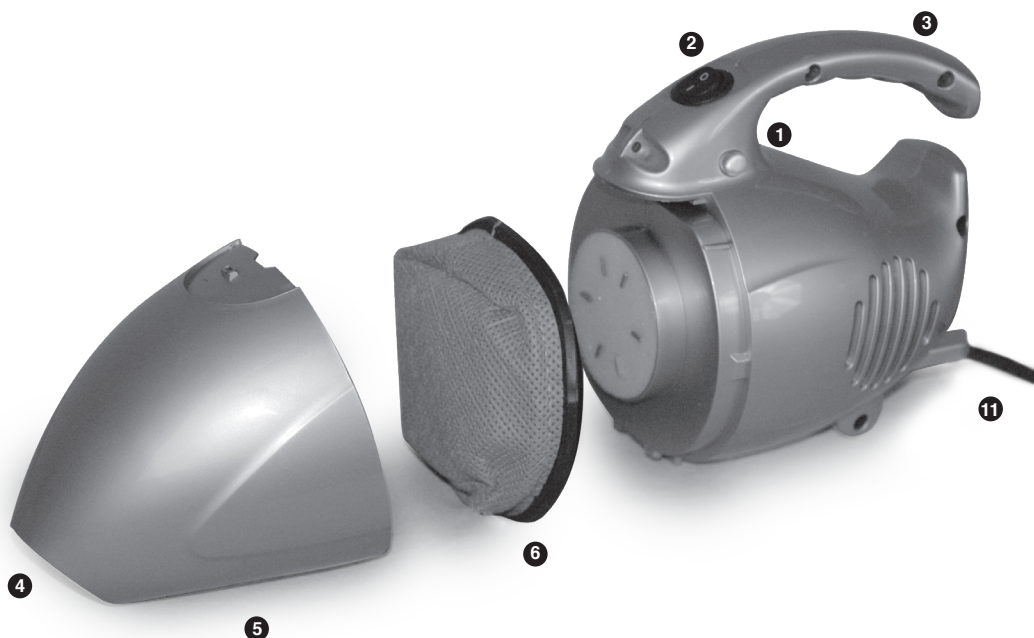
- Read and follow all label marking instructions.
- Keep end of hose and other openings away from your face and body. Do not use the hand vacuum cleaner without dust cup and filter in place.
- Always unplug this appliance before connecting or disconnecting the hand vacuum hose.
- Store the hand vacuum indoors.
- Using improper voltage may result in damage to the motor and possible injury to the user. Correct voltage is listed on the rating label.
- Do not use for any purpose other than described in this owner's manual.
- If the cord is damaged, it must be replaced by the Authorized Simplicity Retailer or a similarly qualified person.

### FOR HOUSEHOLD USE ONLY

---

**WARNING:** To reduce the risk of electric shock, this appliance has a polarized plug (one blade is wider than the other). This plug will fit in a polarized outlet only one way. If the plug does not fit fully in the outlet, reverse the plug. If it still does not fit, contact a qualified electrician to install proper outlet. Do not modify the plug in any way.

## DESCRIPTION OF VACUUM



- 1. Release button
- 2. On/off switch
- 3. Handle
- 4. Suction inlet
- 5. Dust cup
- 6. Dust cup filter
- 7. Flexible hose
- 8. Upholstery brush
- 9. Crevice tool
- 10. Dusting brush
- 11. Power cord

**Safety First:** Always unplug the vacuum from the electrical outlet before opening the dust cup. The dust cup container must be used when operating the vacuum.

### Emptying the Dust Cup

1. To open the dust cup, push the release button and pull out the dust cup.
2. Remove the dust cup filter.
3. Empty the dust from the dust cup and clean the dust cup filter.
4. If desired, you may rinse the dust cup filter under warm water. Wait until the filter dries completely before placing it back into the vacuum.
5. Place the dust cup filter back into the dust cup.
6. Attach the dust cup to the vacuum.



**Caution:** The suction inlet must be open and free of obstructions at all times. Otherwise, overheating could occur and damage the motor.

# OPERATING THE VACUUM

---

## Turning the Vacuum On

Hold the vacuum handle firmly with your hand and push the power button to the 'on' position.

## Tool Cleaning

Your hand vacuum comes equipped with a dusting brush, crevice tool, upholstery brush and a flexible hose. Any of these tools can be directly connected to the suction inlet.



To use the flexible hose, insert hose into suction inlet. You can clean with just the hose or add the dusting brush, crevice tool or upholstery brush to the end of the hose.



Problem	Possible Solution
Vacuum will not operate	<ol style="list-style-type: none"><li>1. Plug unit firmly into outlet.</li><li>2. Check house fuse or breaker. Replace fuse or reset breaker.</li></ol>
Vacuum will not pick up dirt or suction power is weak	<ol style="list-style-type: none"><li>1. Empty dust cup.</li><li>2. Turn off unit and unplug from outlet. Remove dust cup filter and check for object(s) in dust cup and remove.</li><li>3. Clean or replace dust cup filter.</li></ol>
Dust escaping from vacuum	<ol style="list-style-type: none"><li>1. Empty dust cup.</li><li>2. Ensure the dust cup and the dust cup filter are seated properly.</li><li>3. Clean and replace dust cup filter.</li></ol>
Vacuum hose or tools will not pick up	<ol style="list-style-type: none"><li>1. Remove hose and/or tools. Remove obstruction from the hose and/or tool.</li><li>2. Empty the dust cup and clean the dust cup filter.</li></ol>

**Simplicity**<sup>®</sup>  
The vacuum you'll *flip* over.<sup>™</sup>

[www.simplicityvac.com](http://www.simplicityvac.com)