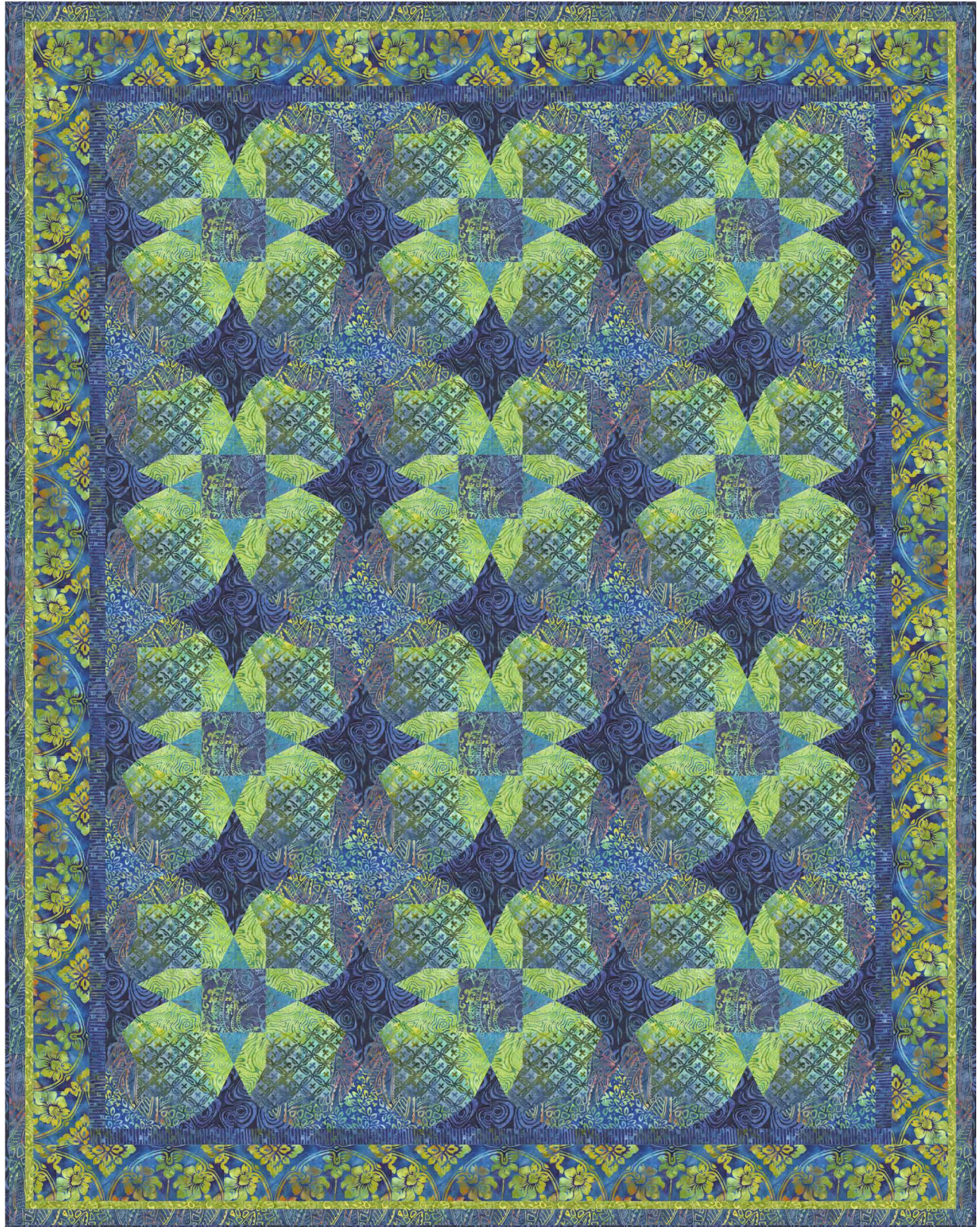


TIMELESS
TREASURES



Tonga Grasshopper

Ozarks in Bloom by Raija Salomaa,
Quilters' Treasure Chest



60 1/2" x 76 1/2"

Tonga Grasshopper

Ozarks in Bloom by Raija Salomaa, Quilters' Treasure Chest

Fabric Requirements & Kitting Chart

Fabric	Yardage for 1 Quilt	Bolts for 12 Kits	Bolts for 24 Kits	Bolts for 36 Kits
Tonga-B6633 Maui	1 1/2	2	3	4
Tonga-B6398 Sprout	1	1	2	3
Tonga-B6629 Reef	1 1/2	2	3	4
Tonga-B6031 Pacific	3/8	1	1	1
Tonga-B6632 Azure	5/8	1	2	2
Tonga-B6194 Marine (includes binding)	1 1/2	2	3	4
Tonga-B3314 Waterfall	3/8	1	1	1
Tonga-B2508 Cascade	1/2	1	1	2
Tonga-B5800 Sapphire	1	1	2	3
Tonga-B6628 Pear	3/8	1	1	1
Backing (42" width) or Backing (106" width)	4 3/4 2			

Total yardage for 1 quilt (not including backing): 8 3/4

Tonga bolt estimates are based on a standard 14-yard bolt. Estimates shown with an asterisk (*) would require exactly 14 yards or an exact multiple of 14 yards. In these instances, you may wish to order an extra bolt.

Estimates also assume that each kit will have only one cut of each fabric. It may be possible to use fewer bolts for some fabrics if you don't mind having two cuts of one fabric in a single kit.

The Ozarks in Bloom pattern is available from:

Quilters' Treasure Chest

raija@quilterst treasurechest.com

www.quilterst treasurechest.com

Also available from Checker Distributors (wholesale only)

www.checkerdist.com