

CutRite™ Glorified 9 Patch 10" Finished Template Set

Using the *Slit 'N Sew™* Method

*The Fastest, Easiest Way to Piece
for Quilters of all Skill Levels*

What is the Slit 'N Sew™ Method by Quilter's Paradise?

Slits cut into pieces for easy and perfect alignment during piecing - each and every time.

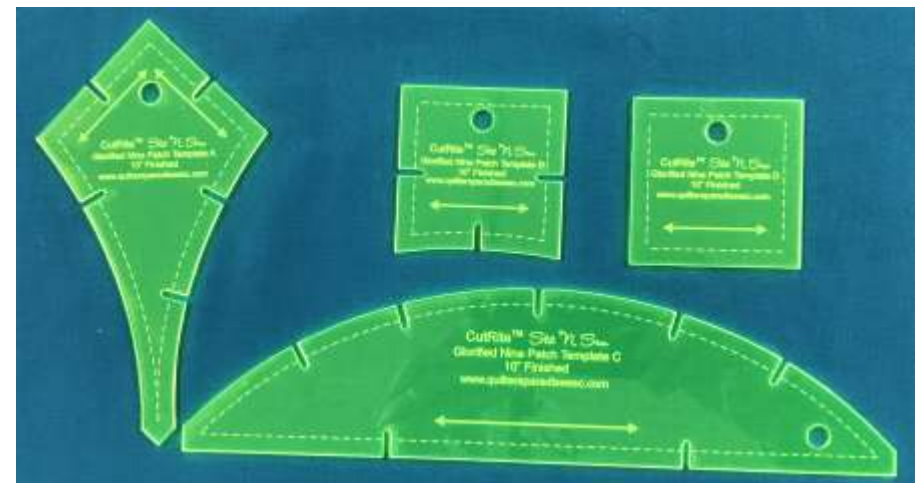
No tedious pinning or paper piecing saving lots of time and effort!

Can be performed by all quilters, from novice to expert!

Please visit our web site for more information, videos and other Slit 'N Sew products.

Making Quilting Simpler

www.quiltersparadiseesc.com



Quilter's Paradise

Making Quilting Simpler

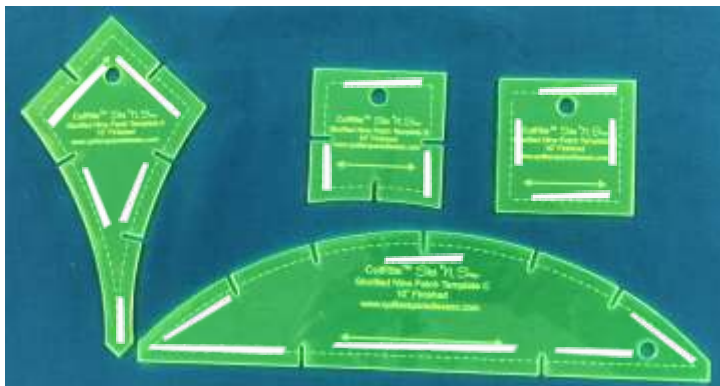
www.quiltersparadiseesc.com

Designed and Written by Quilter's Paradise

© Quilter's Paradise All rights reserved.

Made in USA

Cutting Directions



Remove templates from package. Affix the CutRite™ HandiGrabber material to the back of the templates so they will not slide when cutting. We suggest adding 1/4" wide strips along each edge of each template on the inside of the engraved 1/4" seam allowance line.



At the tip of Piece A there is a slit only on the right side. You need to flip the template over so that you can get a slit on the left side. Add a HandiGrabber strip to the top side before you flip and cut.



Fully cut out all pieces.
Cut each slit on all of the pieces.
Cut from the inside of the slit to the outside away from you..

Once fully cut out, gently pull the fabric so you can see the slits.



Helpful Cutting Hints

Use a sharp rotary cutting blade.

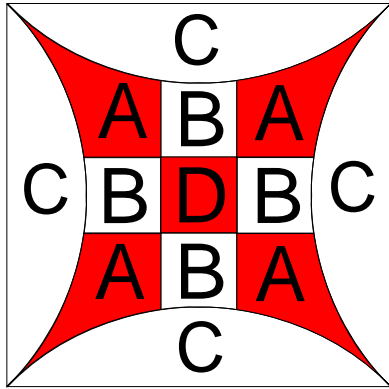
Use either a 28 mm or 45 mm rotary cutter blade. Experience suggests that the 28 mm size tends to work better when cutting tighter curves and cutting slits.

Always cut slits away from yourself by putting the rotary cutter on the inside end of the slit and cutting to the edge of the template.

Cut slits must and need not extend inside the 1/4" seam allowance line. This will not occur with use of 28 mm or 45 mm rotary cutter blades.

You are encouraged to experiment with scrap fabric first to see which blade size and cutting technique work best for you along with how many layers of fabric to cut at a time.

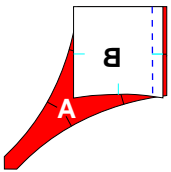
You can use a sharpened pencil or fine tipped marker to mark the slits and use scissors to cut the slits. However, be sure that the marks and cuts do not go inside the 1/4" seam allowance line.



10" Finished

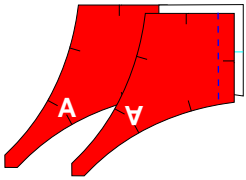
Pieces needed for one Block	
Piece	Quantity
A	4
B	4
C	4
D	1

Sewing Directions

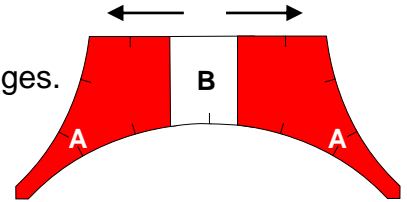


Set stitch length to 1.8.

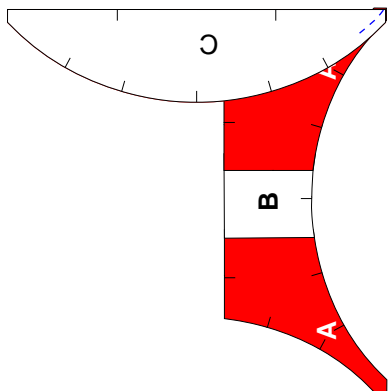
Place Piece A face up.
Place Piece B face down matching the slit and edges.
Sew 1/4" seam.
Press to the A.



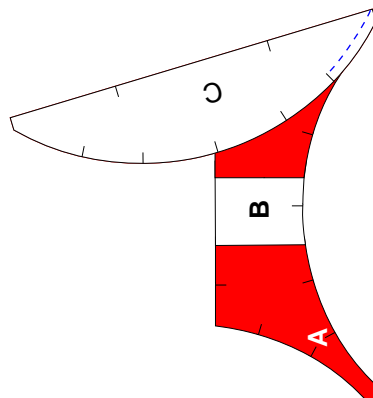
Place what you just sewed face up.
Place Piece A face down matching the slit and edges.
Sew 1/4" seam.
Press to the A.



Adding Piece C to ABA

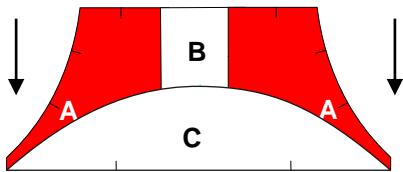
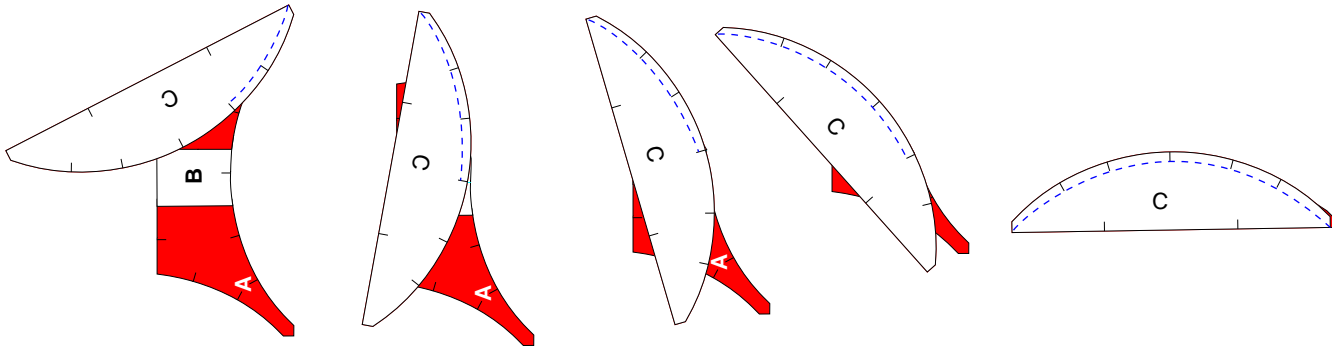


Place what you just sewed face up.
Place Piece C face down matching the edges.
Stitch 1/4" from the edge and stop after 3 stitches with the needle down.



Raise the pressure foot and pull Piece ABA and C together matching the next slit.
Lower the pressure foot and sew to the slit.

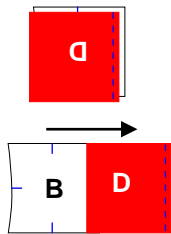
Continue this process until the entire curve is sewn. Once you have reached the last slit, sew stopping 3 stitches from the end.
 Raise the pressure foot, tug the edges together as when you started.
 Lower the pressure foot and sew to the end.



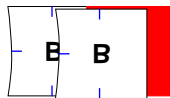
Press to Piece C.
 This is now Piece ABAC.

Make 2 for the block.

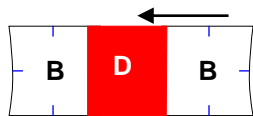
Make Center of Block



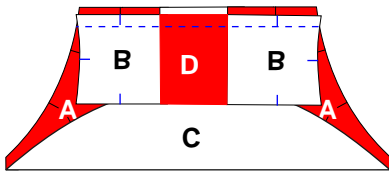
Place Piece B face up.
 Place Piece D face down matching the edges.
 Sew 1/4" seam.
 Press to Piece D.



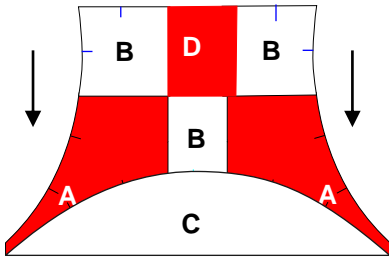
Place what you just sewed face up.
 Place Piece B face down matching the edges.
 Sew 1/4" seam.



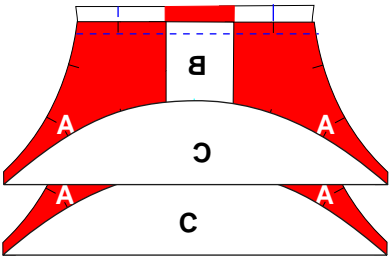
Press to Piece D. Piece is now Piece BDB.



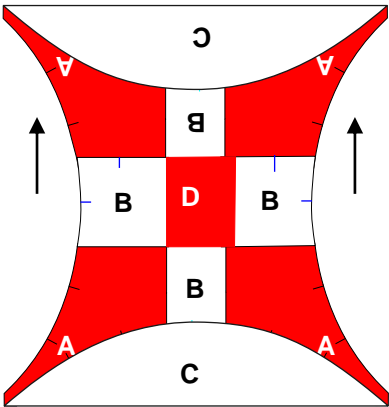
Place Piece ABAC face up.
Place Piece BDB face down matching the edges.
Sew 1/4" seam.



Press to Piece ABAC.



Place what you just sewed face up.
Place Piece ABAC face down matching the edges.
Sew 1/4" seam.



Press to Piece ABAC.

Add Piece C to both sides following the directions in section **Adding Piece C** to ABA starting on page 3.

Have fun laying out your blocks!

