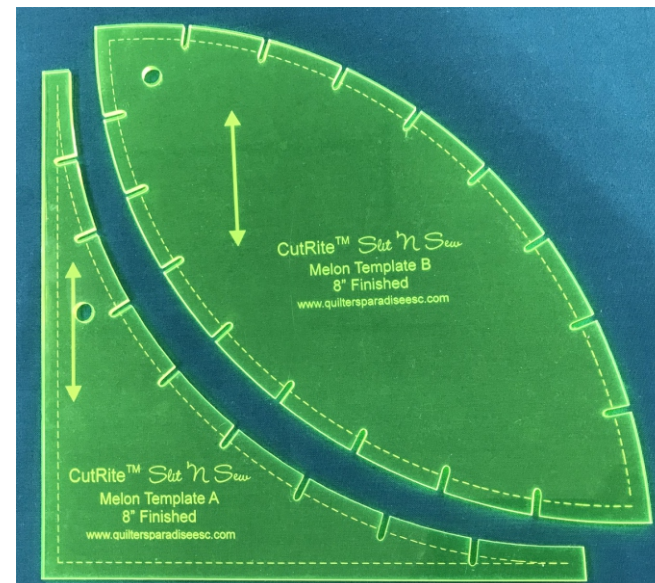




Finished Layout 1

CutRite™ Melon 8" Finished Template

Using the *Slit 'N Sew*™ Method
*The Fastest, Easiest Way to Piece
for Quilters of all Skill Levels*



What is the Slit 'N Sew™ Method by Quilter's Paradise?

Slits cut into pieces for easy and perfect alignment during piecing - each and every time.

No tedious pinning or paper piecing saving lots of time and effort!

Can be performed by all quilters, from beginner to expert!

Please visit our web site for more information, videos and other Slit 'N Sew products.

Making Quilting Simpler
www.quiltersparadiseesc.com

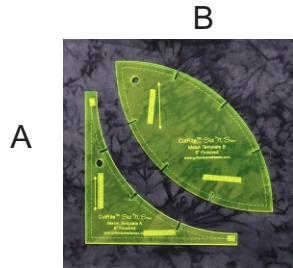


Quilter's Paradise
Making Quilting Simpler
www.quiltersparadiseesc.com

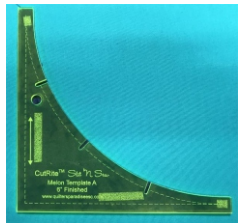
Designed and Written by Quilter's Paradise
© Quilter's Paradise All rights reserved.
Made in USA

Cutting Directions

Remove templates from package. Affix the CutRite™ HandiGrabber material to the back of the templates so they will not slide when cutting. We suggest adding two short 1/4" strips as shown in the picture below.



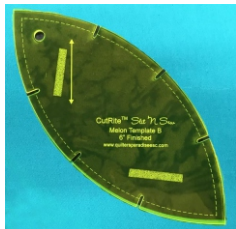
One Piece A and one Piece B fit inside a 12" square.



Fully cut out Piece A.



Cut each slit on Piece A.
Always cut from the inside
to the outside!

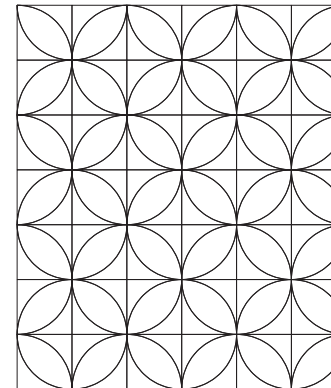


Fully cut out Piece B.

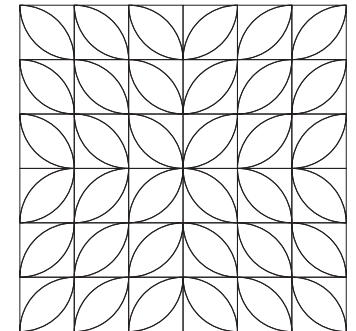


Cut each slit on Piece B.
Always cut from the inside
to the outside!

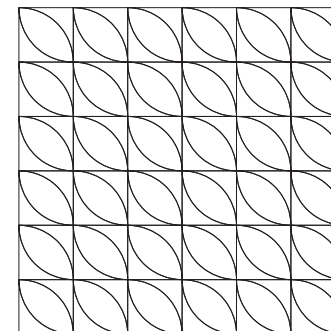
Have fun laying out your blocks!



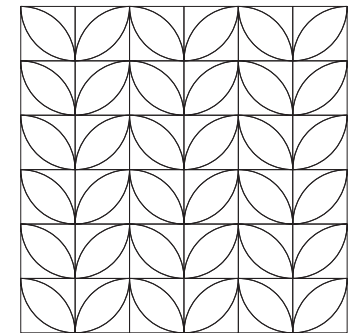
Layout 1
48"x56"
84 Piece As
42 Piece Bs



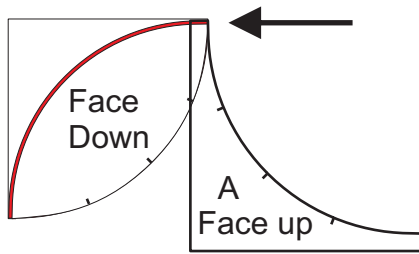
Layout 2
48"x48"
72 Piece As
36 Piece Bs



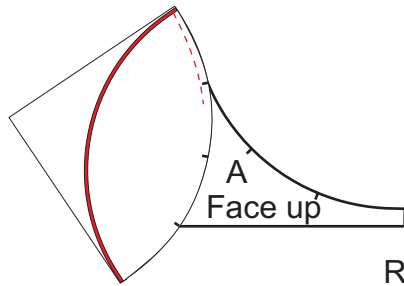
Layout 3
48"x48"
72 Piece As
36 Piece Bs



Layout 4
48"x48"
72 Piece As
36 Piece Bs

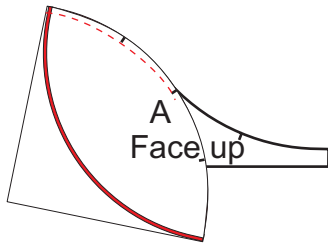


Place Piece A right side face up.
Place already sewn pieces right side face down matching the edges.

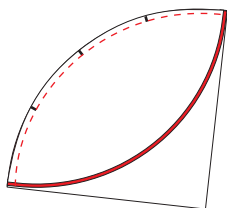


Stitch 1/4" from the edge and stop after 3 stitches with the needle down.

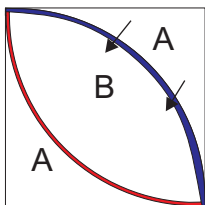
Raise the pressure foot and pull Pieces A and B together matching the next slit.



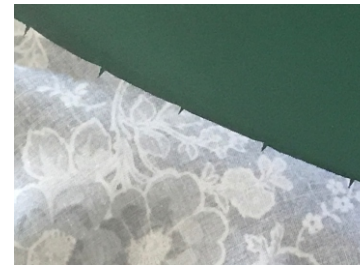
Lower pressure foot and sew to the slit.



Continue this process until the entire curve is sewn.



Press seam toward piece B shown in blue.



Once fully cut out, pull so you can see the slits.



Helpful Cutting Hints

Use a sharp rotary cutting blade.

Use either a 28 mm or 45 mm rotary cutter blade. Experience suggests that the 28 mm size tends to work better when cutting tighter curves and cutting slits.

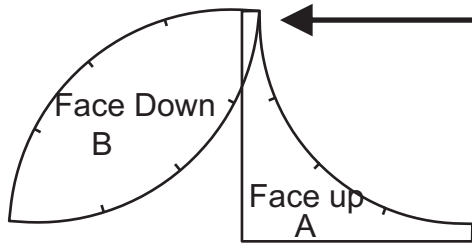
Always cut slits away from yourself by putting the rotary cutter on the inside end of the slit and cutting to the edge of the template.

Cut slits must and need not extend inside the 1/4" seam allowance line. This will not occur with use of 28 mm or 45 mm rotary cutter blades.

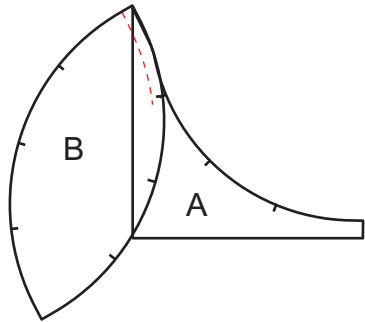
You are encouraged to experiment with scrap fabric first to see which blade size and cutting technique work best for you along with how many layers of fabric to cut at a time.

You can use a sharpened pencil or fine tipped marker to mark the slits and use scissors to cut the slits. However, be sure that the marks and cuts do not go inside the 1/4" seam allowance line.

Sewing Directions



Place Piece A face up.
Place Piece B face
down matching the
edges.

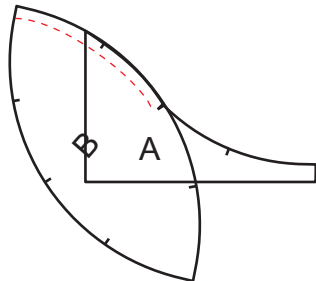


I set my stitch length to 1.8.

Stitch 1/4" from the edge and
stop after 3 stitches with the
needle down.



The pieces will
gather when
sewing.

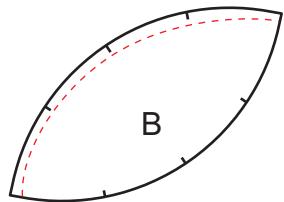


Raise the pressure foot and
pull Pieces A and B together
matching the next slit.

Lower pressure foot and sew
to the slit.

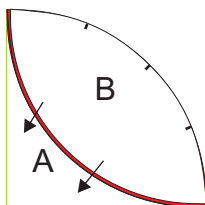


With your needle
down, pull Pieces
B and A together
matching the slits.



Continue this process until
the entire curve is sewn.

Face Down



Press seam toward
piece A shown in red.

