

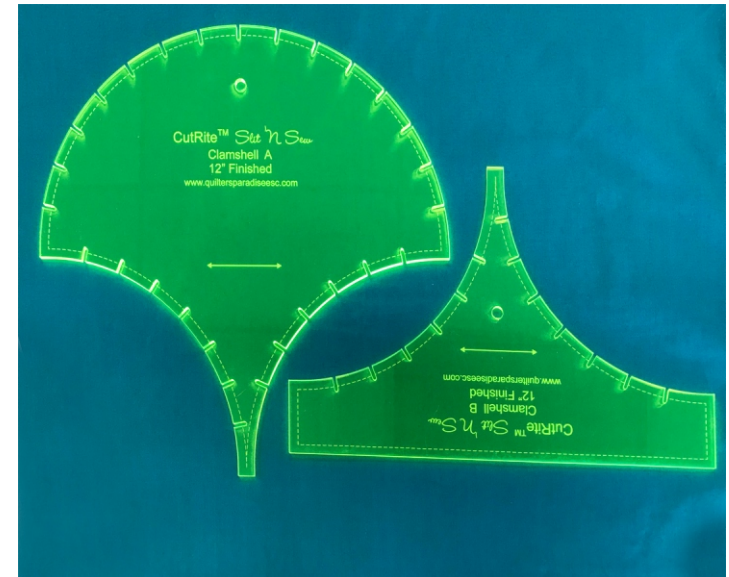


Finished Layout 1

CutRite™ Clamshell 12” Finished Template

Using the *Slit 'N Sew™* Method

*The Fastest, Easiest Way to Piece
for Quilters of all Skill Levels*



What is the Slit 'N Sew™ Method by Quilter's Paradise?

Slits cut into pieces for easy and perfect alignment during piecing – each and every time.

No tedious pinning or paper piecing saving lots of time and effort!

Can be performed by all quilters, from beginner to expert!

Please visit our web site for more information, videos and other Slit 'N Sew products.

Making Quilting Simpler

www.quiltersparadiseesc.com



Quilter's Paradise

Making Quilting Simpler

www.quiltersparadiseesc.com

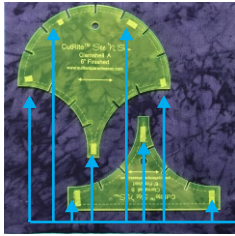
Designed and Written by Quilter's Paradise

© Quilter's Paradise All rights reserved.

Made in USA

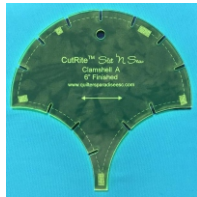
Cutting Directions

Remove templates from package. Affix the CutRite™ HandyGrabber material to the back of the templates so they will not slide when cutting. We suggest adding 1/4" wide squares at each corner edge of each template on the inside of the engraved 1/4" seam allowance line. See picture below.



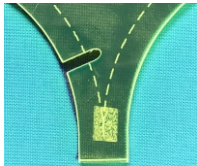
One Piece A and one Piece B fit inside a Fat Quarter or Two Piece A's fit inside a Fat Quarter. Piece A can be used to fussy cut a large print.

HandyGrabber squares

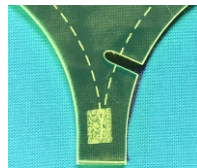


Fully cut out Piece A.

Cut each slit on Piece A. Always cut from the inside to the outside!

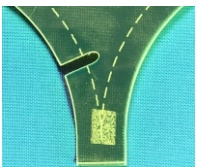


At the base of Piece A there is a slit only on the left side. You need to flip the template so that you can get a slit on the right side. Add a HandyGrabber square to the top side before you cut.

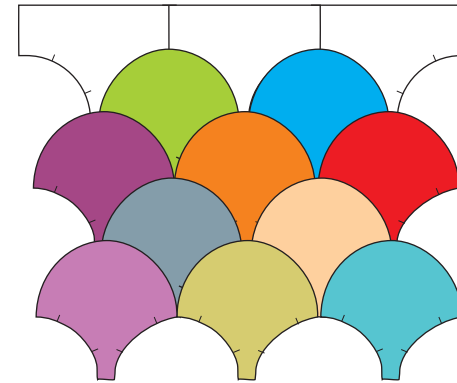
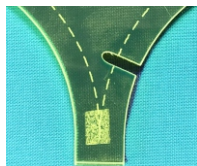


Fully cut out Piece B.

Cut each slit on Piece B. Always cut from the inside to the outside!

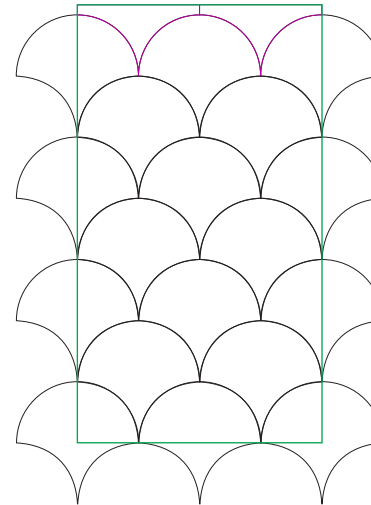


At the base of Piece A and B there is a slit only on the left side. You need to flip the template so that you can get a slit on the right side. Add a HandyGrabber square to the top side before you cut.

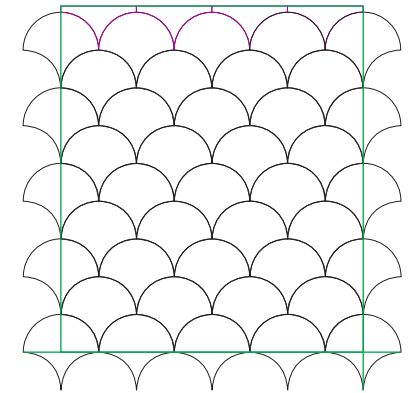


The next row (and all even rows) will have full Piece A's. The following row (and all odd rows) will start and end with partial Piece A's.

Have fun laying out your pieces!

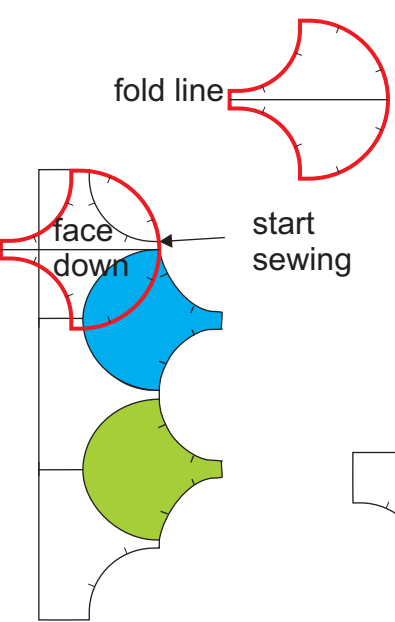


Layout 1
24"x43"
18 12" Clamshell Piece As
2 Clamshell Piece Bs

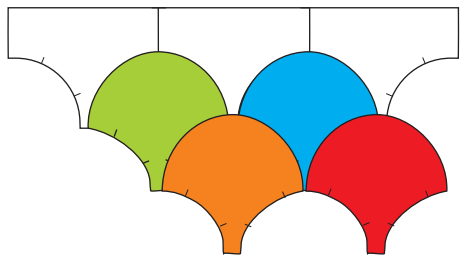
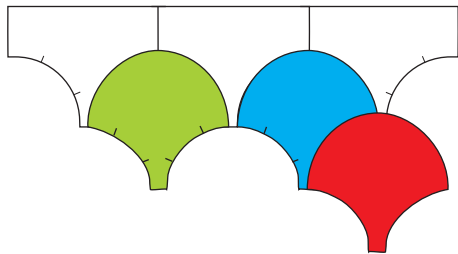


Layout 2
48"x55"
41 12" Clamshell Piece As
4 Clamshell Piece Bs

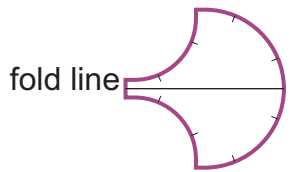
We suggest trimming the quilt to keep the edges of the quilt straight.



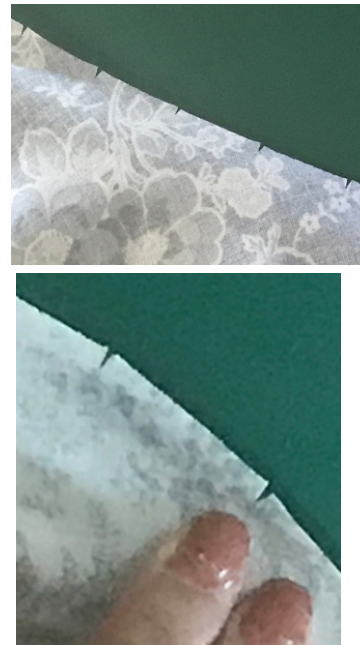
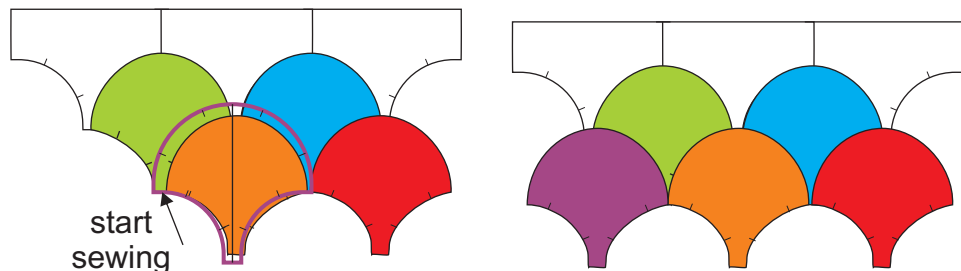
Once done with the first row, you will only be sewing piece A's. Starting with row three (odd) rows will begin with a partial Piece A. Instead of trimming this piece, fold the piece in half. Align the top center of this piece face down with the sewn line of the face up piece A as shown in Blue.



Add full Piece A's using Step 2 as shown on page 4.



Starting with row three (odd) rows will end with a partial Piece A. Instead of trimming this piece fold the piece in half. Start sewing using Step 2 as shown on page 4. Stop sewing 1/4" past the fold.



Once fully cut out, pull so you can see the slits.

Helpful Cutting Hints

Use a sharp rotary cutting blade.

Use either a 28 mm or 45 mm rotary cutter blade. Experience suggests that the 28 mm size tends to work better when cutting tighter curves and cutting slits.

Always cut slits away from yourself by putting the rotary cutter on the inside end of the slit and cutting to the edge of the template.

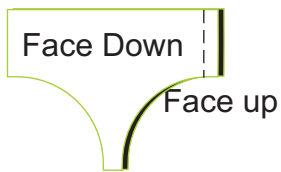
Cut slits must and need not extend inside the 1/4" seam allowance line. This will not occur with use of 28 mm or 45 mm rotary cutter blades.

You are encouraged to experiment with scrap fabric first to see which blade size and cutting technique work best for you along with how many layers of fabric to cut at a time.

You can use a sharpened pencil or fine tipped marker to mark the slits and use scissors to cut the slits. However, be sure that the marks and cuts do not go inside the 1/4" seam allowance line.

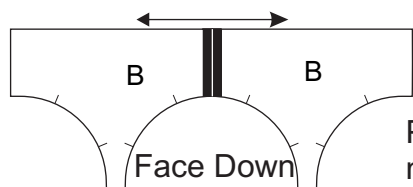
Sewing Directions

Step 1



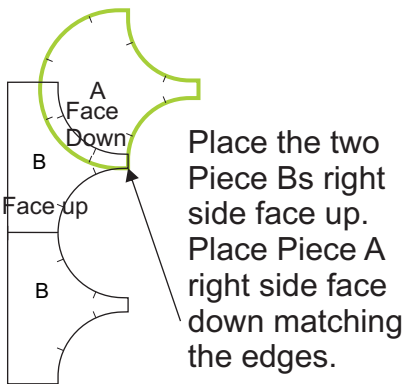
Set stitch length to 1.8.

Place Piece B right side face up. Place another Piece B right side face down matching the edges. Sew a seam that is exactly 1/4".

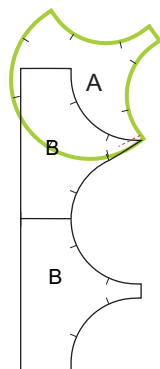


Press seam open. For the slits to match when you add Piece A, the seam must be 1/4".

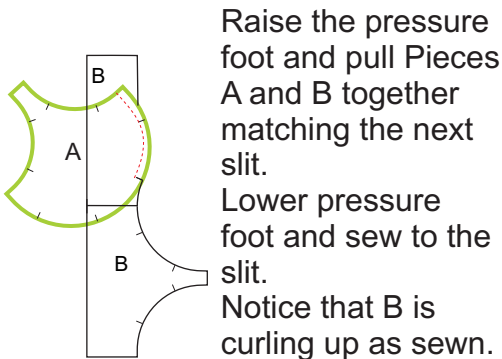
Step 2



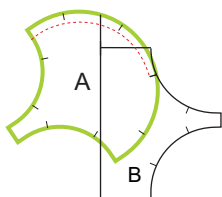
Place the two Piece Bs right side face up. Place Piece A right side face down matching the edges.



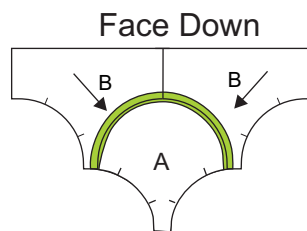
Stitch 1/4" from the edge and stop after 3 stitches with the needle down.



Raise the pressure foot and pull Pieces A and B together matching the next slit. Lower pressure foot and sew to the slit. Notice that B is curling up as sewn.

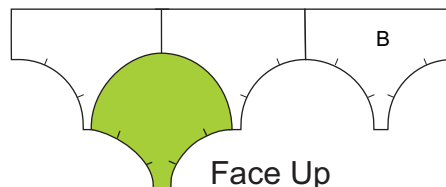


Continue this process until the entire curve is sewn.



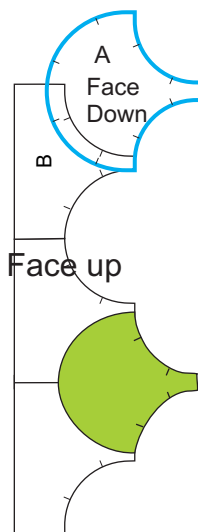
Press seam toward piece A.

Step 3

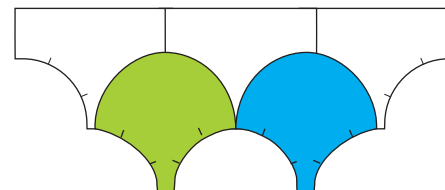


Add another piece B using a 1/4" seam as shown in Step 1. Press open.

Step 4



Add another piece A as shown in Step 2. Press to the new Piece A.



Keep adding a piece B then a piece A until you finish the top row. For Layout 2 shown on page 7, the top row contains 4 B's. The second row contains 5 A's.

