

CutRite™ Apple Core 4" Finished Template

Using the *Slit 'N Sew™* Method

*The Fastest, Easiest Way to Piece
for Quilters of all Skill Levels*

What is the Slit 'N Sew™ Method by Quilter's Paradise?

Slits cut into pieces for easy and perfect alignment during piecing –
each and every time.

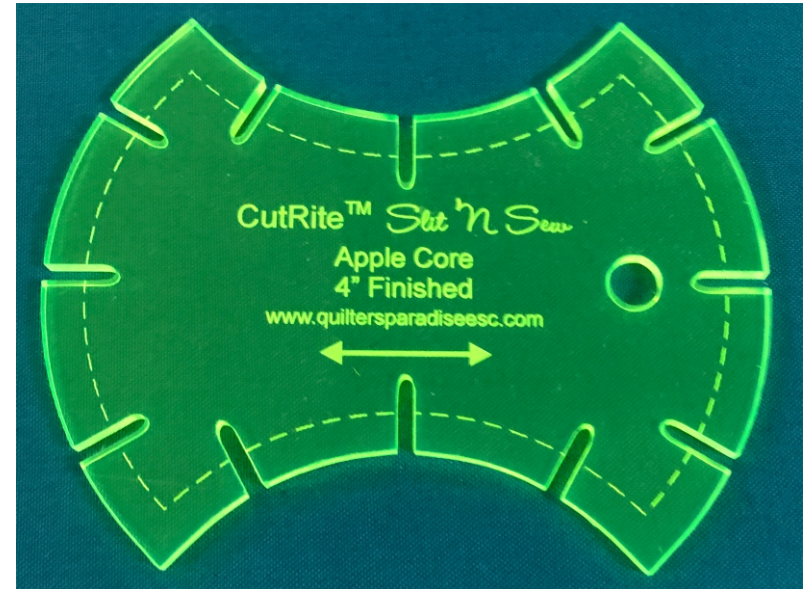
No tedious pinning or paper piecing saving lots of time and effort!

Can be performed by all quilters, from novice to expert!

Please visit our web site for more information, videos and other
Slit 'N Sew products.

Making Quilting Simpler

www.quiltersparadiseesc.com



Quilter's Paradise

Making Quilting Simpler

www.quiltersparadiseesc.com

Designed and Written by Quilter's Paradise
© Quilter's Paradise All rights reserved.
Made in USA

Cutting Directions

Remove template from package. Affix the CutRite™ HandiGrabber material to the back of the template so it will not slide when cutting. We suggest adding 1/4" wide strips along each straight edge of each template on the inside of the engraved 1/4" seam allowance line. See picture below.



The Apple Core Template fits inside of a 5" square.

HandiGrabber strip



Cut each slit from the inside out.

Helpful Cutting Hints

Use a sharp rotary cutting blade.

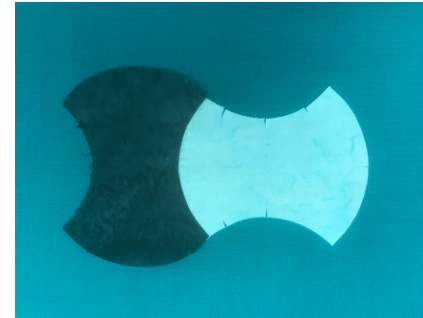
Use either a 28 mm or 45 mm rotary cutter blade. Experience suggests that the 28 mm size tends to work better when cutting tighter curves and cutting slits.

Always cut slits away from yourself by putting the rotary cutter on the inside end of the slit and cutting to the edge of the template.

Cut slits must and need not extend inside the 1/4" seam allowance line. This will not occur with use of 28 mm or 45 mm rotary cutter blades.

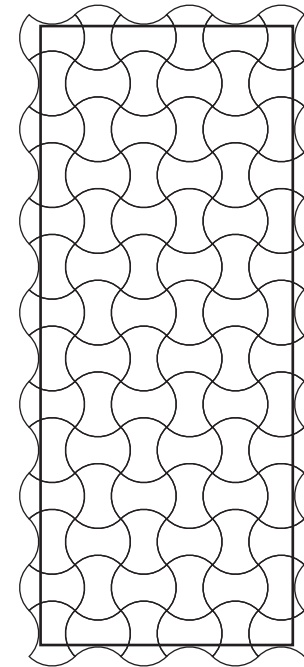
You are encouraged to experiment with scrap fabric first to see which blade size and cutting technique work best for you along with how many layers of fabric to cut at a time.

You can use a sharpened pencil or fine tipped marker to mark the slits and use scissors to cut the slits. However, be sure that the marks and cuts do not go inside the 1/4" seam allowance line.



Press to the dark side.

Have fun laying out your blocks!



15.5" x 48"
84 4" Apple Cores

We suggest trimming the quilt to 15.5" x 48" to keep the edges of the quilt straight.



The odd rows start and end with the apple core positioned vertically.
The even rows start and end with the apple core positioned horizontally.

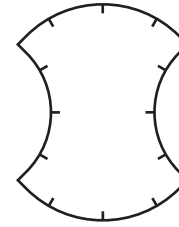
To sew the rows together, line up the edges the same as sewing two apple cores together. Keep matching slits and seams to the end of the row.

You will be amazed that you can do this with

No Pinning!

Sewing Directions

All of the apple cores are the same size and shape as shown below:



Each side of the apple core has slits.

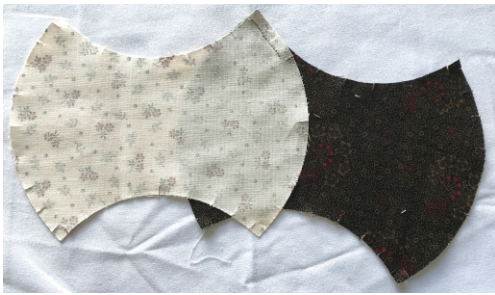


1
Arrange apple cores as shown right sides up.



2
Place right sides together matching the ends. Notice that the other ends do not match.





3

Sew 1/4" seam to the third slit pulling the edges together.



4

Keep sewing 1/4" seam pulling the edges together matching the slits. Do not pull past a slit. The already sewn parts of the apple core will start curling. That is ok.



5

Keep sewing 1/4" seam pulling the edges together matching the slits. Do not pull past a slit. The already sewn parts of the apple core will start curling. That is ok.



6

Keep sewing 1/4" seam pulling the edges together matching the slits. When you get to the end make sure the edges meet.

