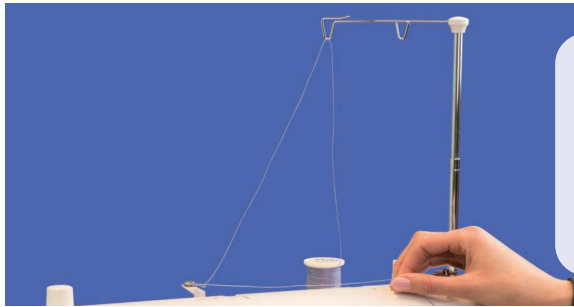


let's get to the basics

Your machine is out of the box and you have plenty of ideas waiting to get out, right? Let's get the basics out of the way. Before you start sewing, you'll have to wind a bobbin and then thread your machine. But don't be intimidated – it's easier than you think with Accomplish 2's friendly features. Once you've followed these quick and easy steps, simply select a stitch and you're ready to sew!

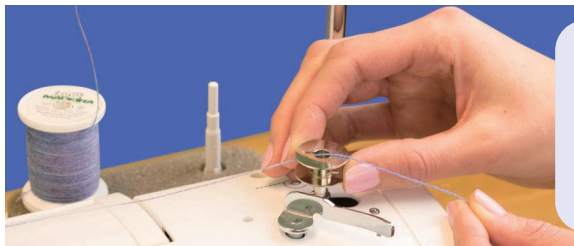


the bobbin



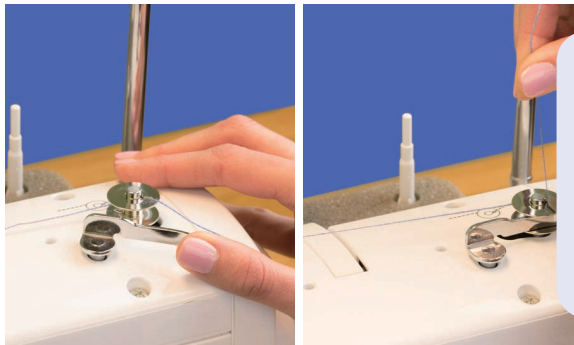
- Pull up the thread antenna to its highest position. Place the thread spool on the first spool pin. Pass the thread up through the first triangular hole on the antenna and then down through eyelet and around the tension disk.

1.



- Pass the thread through the bobbin winding thread guide as shown on the machine.
- Bring thread through the top thread notch on the bobbin. Position bobbin on post.

2.



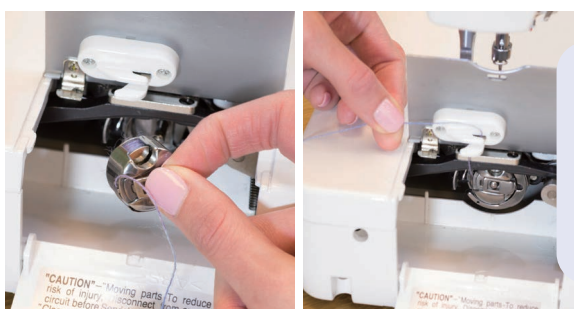
- Press the bobbin winding clutch up against empty bobbin. Start winding the bobbin a few rotations, then stop and trim the extra thread next to the notch on the bobbin.
- Stop the winding process when the bobbin is full, then manually move the bobbin winding clutch back to its original position. Remove bobbin and cut the thread.

3.



- To locate the bobbin case, raise the needle plate, lower the door and place the bobbin inside the bobbin case. Bobbin should be positioned so it winds to the left. Run the thread through the thread notch and under latch spring, so that a length of thread is exposed.

4.

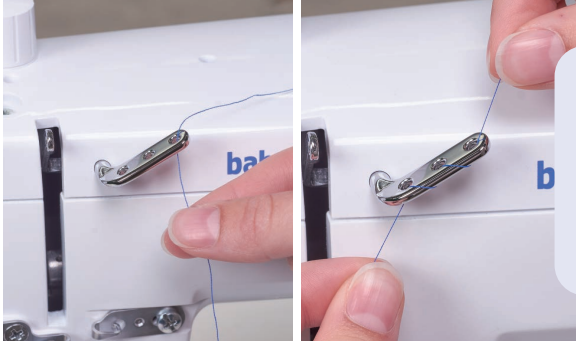


- Pull latch lever to hold bobbin in place and return it to its original position.
- Pass thread through the quick bobbin threading device until the thread is cut.

5.



the needle



- Thread through antenna and eyelet as shown in directions. Thread the tension guide with thread from the top down, repeating until all three holes are threaded.

1.



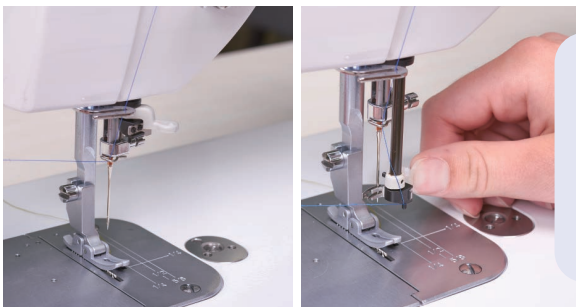
- Bring thread down and around the tension assembly, making sure to catch the tension spring before traveling up to the take-up lever.

2.



- Turn handwheel counterclockwise, or toward you, to bring needle and take-up lever to the highest position. Thread take-up lever.

3.



- Lower the presser foot. Pull down the needle threader, bring the thread around the needle threader and in front of the eye of the needle.

4.



- Bring up the bobbin thread by holding the needle thread and turning the hand wheel one full rotation towards you. The bobbin thread will loop around the needle thread. Pull the loop through to retrieve the bobbin thread.

5.

baby lock
genuine ♥ collection