

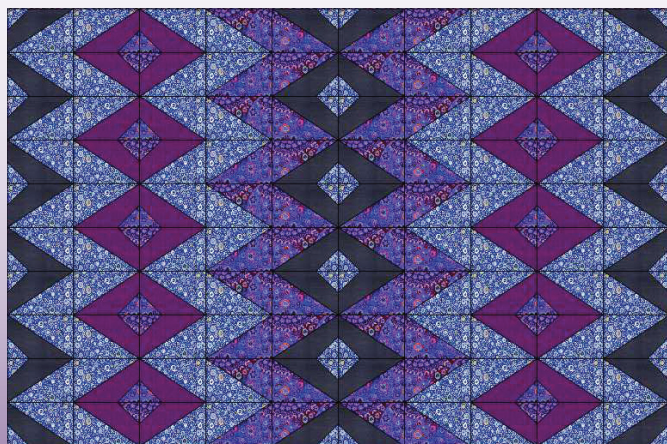
powerquilter™ 16.0

OPTIONAL ACCESSORIES

- TruStitch™
- Horizontal Spool Pin
- 18" Table Extension
- Table Overlay



The TruStitch™ stitch regulator is designed to turn the PFAFF® *powerquilter*™ 16.0 machine into a stitch-regulated quilting machine. It uses patent-pending technology to track your sewing motion and regulate the stitch length as you move the fabric around the table.



Visit our website for quilt pattern instructions

PFAFF
Perfection starts here.™

powerquilter™ 16.0

Maximum Control.
Precision Quilting.
Complete Creativity.



www.pfaff.com



PFAFF, PERFECTION STARTS HERE and POWERQUILTER are trademarks of KSIN Luxembourg II, S.à.r.l. ©2013 KSIN Luxembourg II, S.à.r.l. All rights reserved. TRUSTITCH is a trademark of Handi Quilter, Inc. Printed in the USA.

Professional Quilting Power in an Efficient, Compact Machine

Your new quilt projects require free-motion quilting, but you've been struggling to fit your project in a small space. The PFAFF® *powerquilter*™ 16.0 quilting machine is the perfect solution.



powerquilter™ 16.0

Advanced Features for Precision Quilting

THE SPACE TO MAKE IT PERFECT

Complete any size quilting project with 16" of throat space and 8" of vertical space

POWERFUL AND PRECISE

Made to meet your expectations of speed and precision with up to 1,500 stitches per minute

SEE EVERY DETAIL

The entire work area is lit with bright LEDs for maximum visibility of your project

PROFESSIONAL SIZE WORKSPACE

You'll have complete support for any size project with the included 36" x 30" table

TOTAL CONTROL

Set your preferred speed on the color touch screen, with quick access to the stitch counter, calculator, and diagnostics program

ADDITIONAL FEATURES

Large-Capacity M-Size Bobbins

4 Spool Thread Stand

Needle Up/Down with
One Tap of the Foot Pedal

Separate Bobbin Winder



Thread artistry — enhance the
look of your quilts

