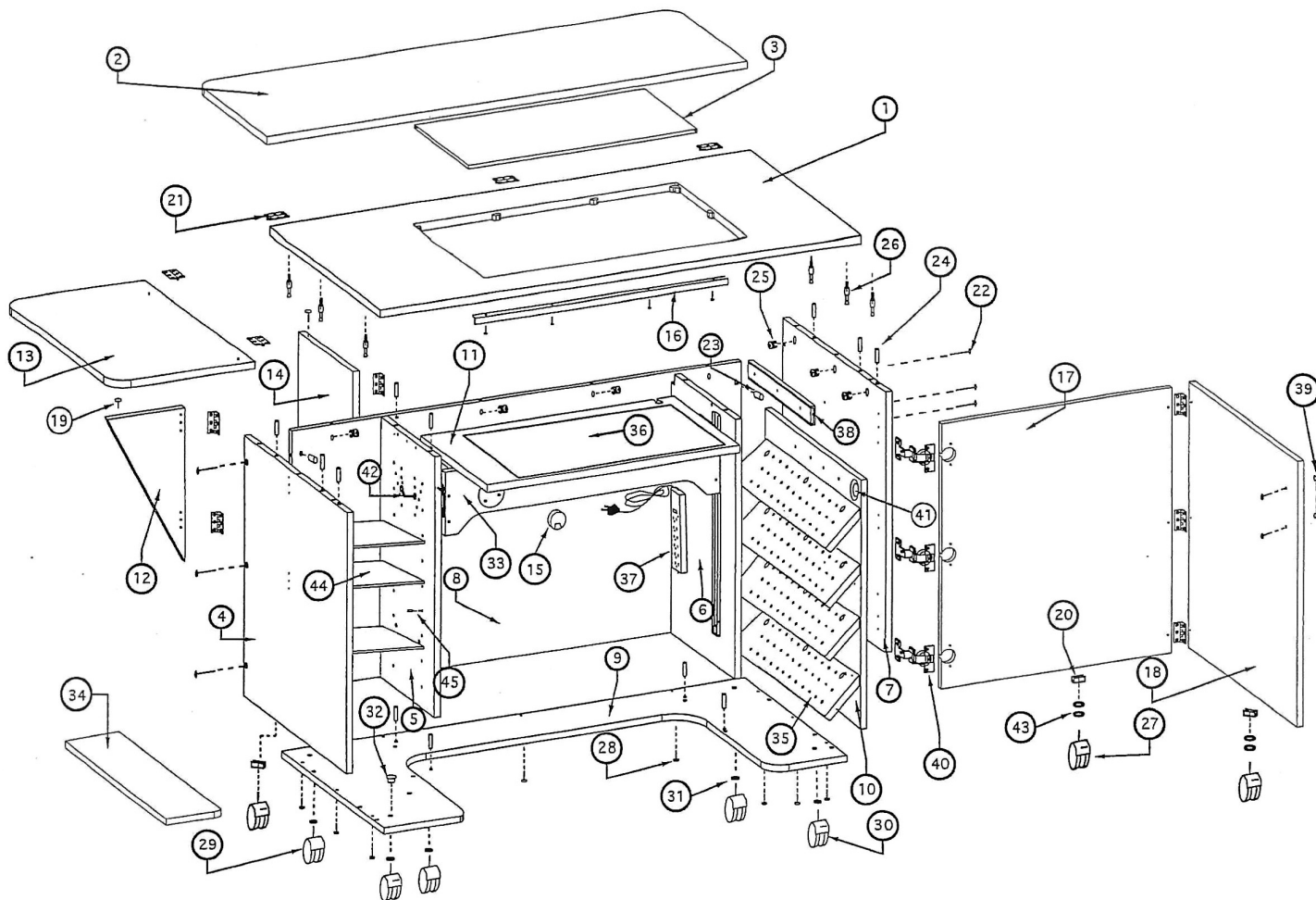


MODEL: 8050A PARTS DRAWING

1/29/19



NOTE: WHEN ORDERING REPLACEMENT PARTS, PLEASE SPECIFY PART NUMBER _____ AND COLOR _____ .

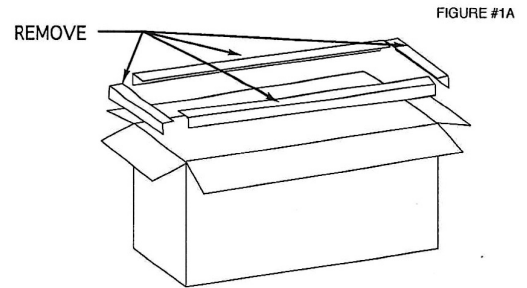
HORN OF AMERICA, INC.
 P.O. BOX 608
 SUTTON, WV 26601
 PH: (800) 882-8845

<u>PART NO.</u>	<u>DESCRIPTION</u>	<u>QTY. REQ.</u>	<u>PART NO.</u>	<u>DESCRIPTION</u>	<u>QTY. REQ.</u>
8050A-1	TOP	1	8050A-23	5/8" BARREL NUT	6
8050A-2	DROP LEAF	1	8050A-24	WOOD DOWEL	20
8050A-3	FILLER PANEL	1	8050A-25	CAM LOCK	10
8050A-4	LEFT SIDE PANEL	1	8050A-26	CAM LOCK PIN	10
8050A-5	LEFT LIFT PANEL	1	8050A-27	PUSH-IN LOCKING CASTER	3
8050A-6	RIGHT LIFT PANEL	1	8050A-28	SCREW #8 X 1 1/8"	13
8050A-7	RIGHT SIDE PANEL	1	8050A-29	5/16" THREAD NON-LOCK CASTER	3
8050A-8	BACK	1	8050A-30	5/16" THREAD LOCKING CASTER	2
8050A-9	BOTTOM	1	8050A-31	CASTER WASHER	5
8050A-10	HOOP/ SHELF PANEL	1	8050A-32	5/16" THREAD INSERT NUT	5
8050A-11	MOUNTING PLATFORM	1	8050A-33	REFER TO MODEL 14B	1
8050A-12	EXTENSION SUPPORT PANEL	1	8050A-34	FOAM PROTECTOR PAD	1
8050A-13	SWING UP EXTENSION PLATFORM	1	8050A-35	THREAD STORAGE SHELF	4
8050A-14	SUPPORT PANEL	1	8050A-36	NON-SLIP PAD	1
8050A-15	WIRING GROMMET	1	8050A-37	POWER STRIP	1
8050A-16	TOP SUPPORT RAIL W/SCREWS	1	8050A-38	100# DRAWER SLIDE W/ SCREWS	2
8050A-17	RIGHT BI-FOLD DOOR	1	8050A-39	DOOR PULL W/ SCREWS	1
8050A-18	LEFT BI-FOLD DOOR	1	8050A-40	270 DEGREE HINGE W/ SCREWS	3
8050A-19	GLIDE TACK	2	8050A-41	FINGER PULL	1
8050A-20	5/8" U- CASTER BRACKET	3	8050A-42	HOOP HOOK	6
8050A-21	BUTT HINGE W/ SCREW	12	8050A-43	PLASTIC CASTER WASHER	4
8050A-22	CONNECTOR BOLT 2"	6	8050A-44	ADJUSTABLE SHELF	3
			8050A-45	SHELF PINS	12

MODEL 8050A ASSEMBLY INSTRUCTIONS

1. UNPACKING CABINET

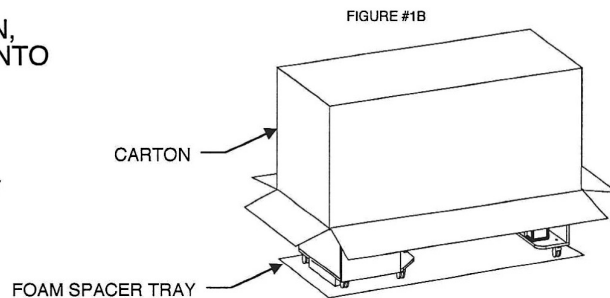
AFTER OPENING CARTON REMOVE
BOTTOM CORNER PIECES ONLY.
LEAVE FOAM SPACER TRAY.



WITH THE HELP OF ANOTHER PERSON,
SLOWLY LOWER BACK OF CABINET ONTO
FLOOR AND THEN ROTATE UPRIGHT
AS SHOWN IN FIGURE #1A.

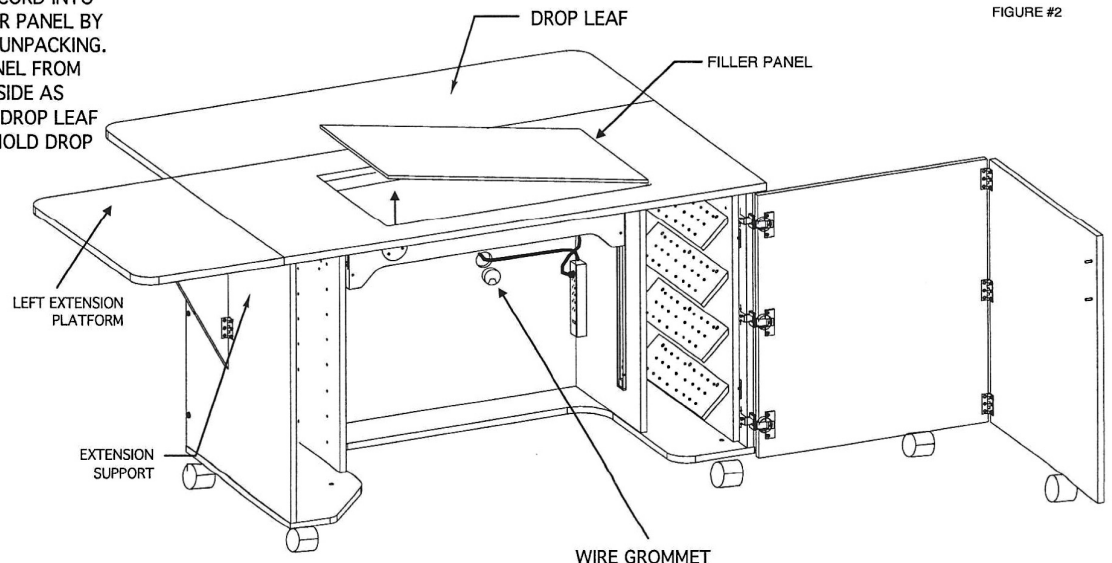
LIFT CARTON OFF OF CABINET. LIFT
CABINET OFF OF FOAM SPACER TRAY
AS SHOWN IN FIGURE #1B

AFTER REMOVING SHRINK WRAP
LOCATE INNER CARTON POSITIONED
ON SIDE OF CABINET.



2. OPEN CABINET AND REMOVE INNER CARTON

LIFT UP LEFT EXTENSION PANEL AND USE
EXTENSION SUPPORT PANEL TO HOLD PLATFORM
IN POSITION. PULL OUT WIRING
GROMMET AND ROUTE POWER CORD
THROUGH HOLE. PUSH WIRING GROMMET
BACK IN PLACE. PLUG POWER CORD INTO
POWER OUTLET. REMOVE FILLER PANEL BY
REMOVING TAPE STRIPS WHEN UNPACKING.
TO REMOVE INSERT/FILLER PANEL FROM
TOP, PUSH UP FROM BOTTOM SIDE AS
SHOWN IN FIGURE #2. LIFT UP DROP LEAF
AND USE SUPPORT PANEL TO HOLD DROP
LEAF IN PLACE.



MODEL 8050A
ASSEMBLY INSTRUCTIONS

3. REMOVE PACKING FROM ELECTRIC LIFT AND OPTIONAL FOOT SHELF REMOVAL

REMOVE 2 PACKING BLOCKS LOCATED UNDER LIFT BY REMOVING SCREWS. USE SWITCH AND LOWER PLATFORM. REMOVE 2 FOAM PACKING SPACERS AND DISCARD AS SHOWN IN FIGURE #3.

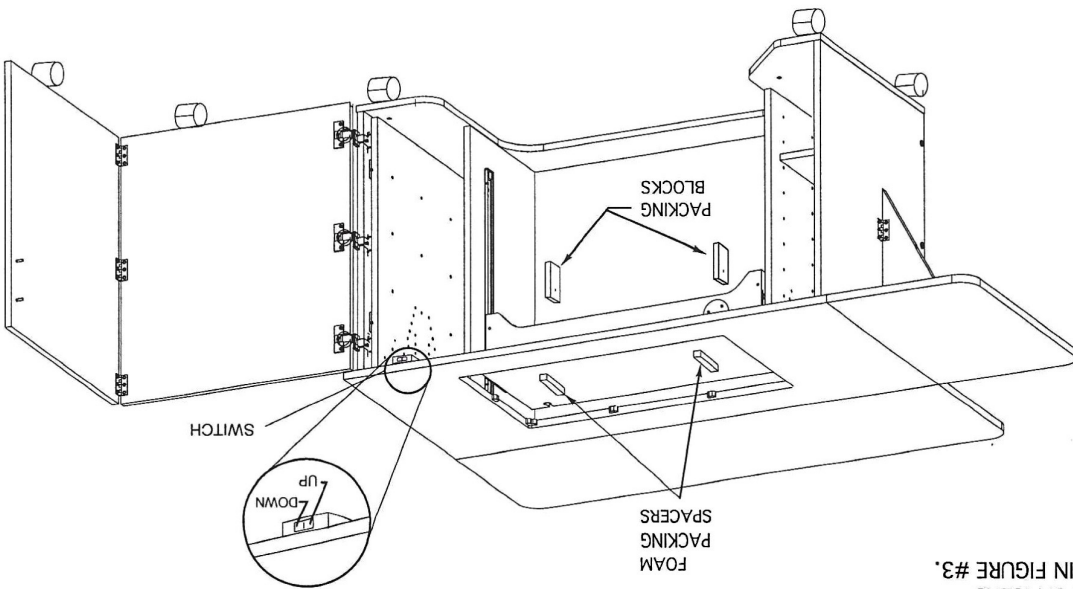


FIGURE #3

4. EMBROIDERY STORAGE AND THREAD STORAGE PANEL

PULL OUT THREAD STORAGE PANEL. INSERT PLASTIC THREAD PEGS IN HOLES ON THREAD SHELVES.

SCREW 2-HANGER HOOKS INTO PRE-DRILLED HOLES ON LEFT PANEL TO HOLD HOOP. CONTINUE WITH NEXT SMALLEST HOOP(S) AS SHOWN IN FIGURE #4.

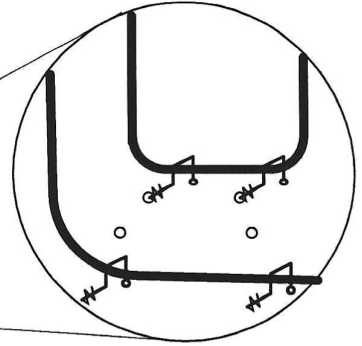
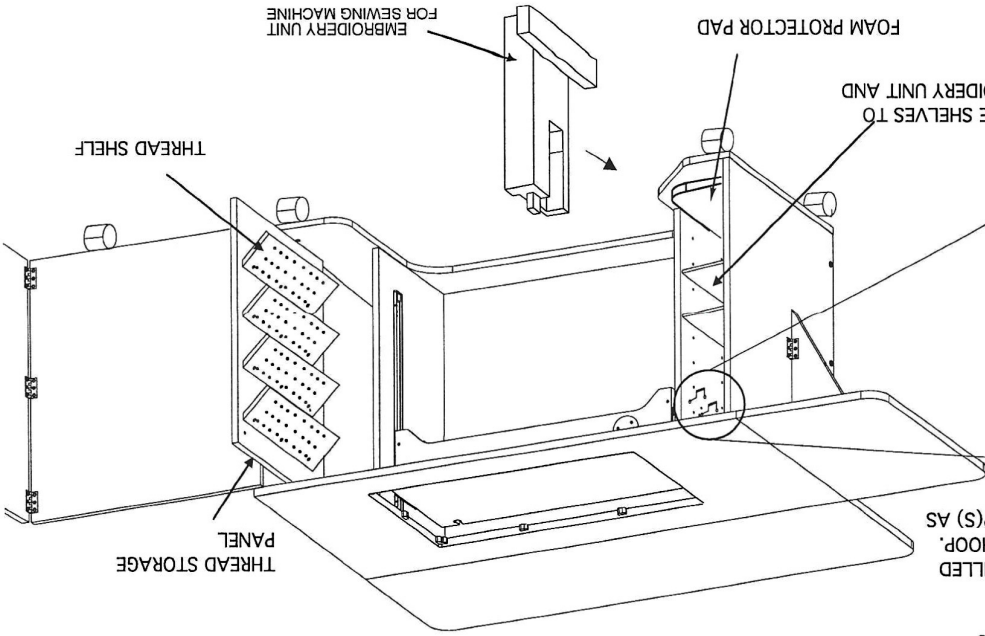
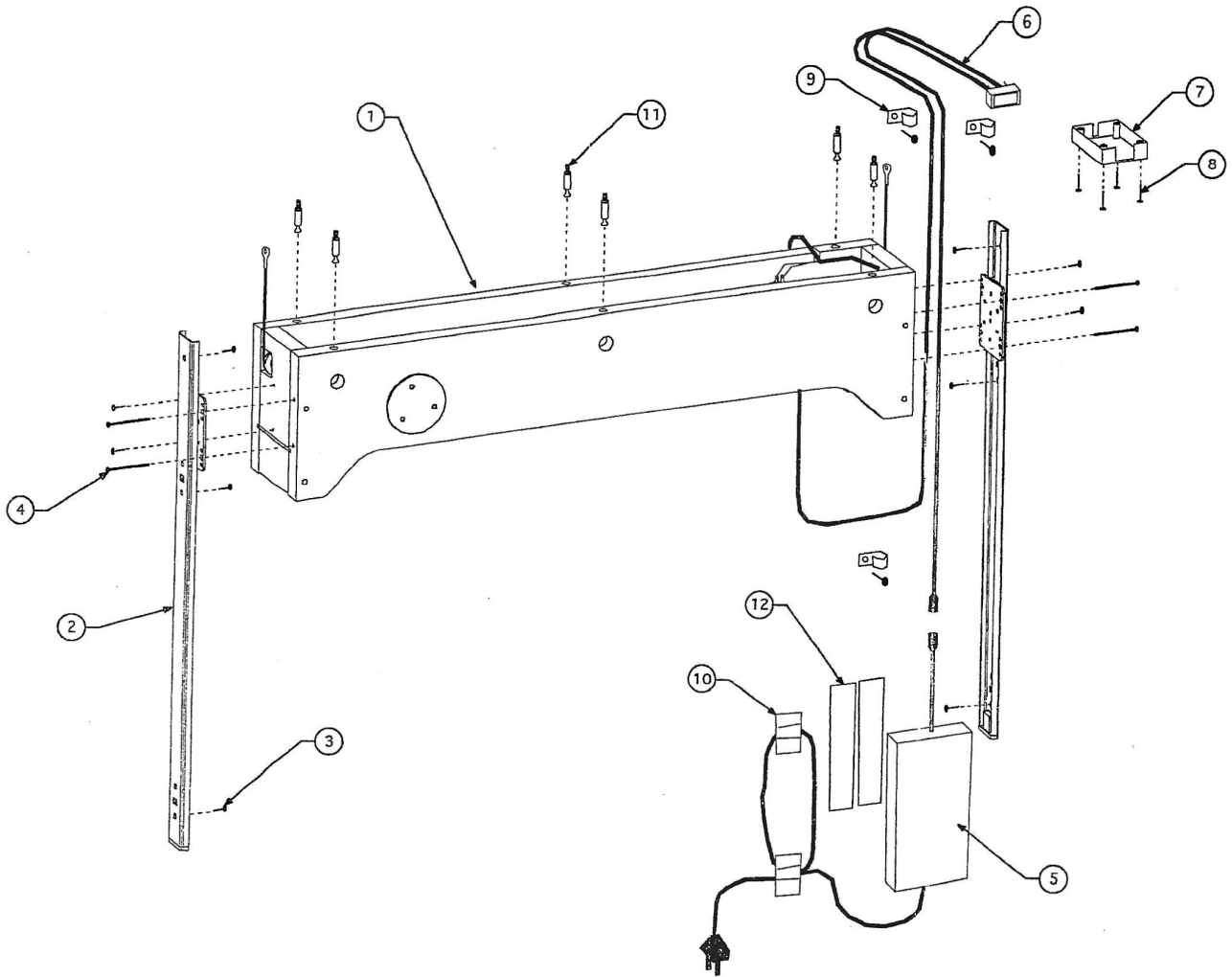


FIGURE #4



MODEL: 18A
ELECTRIC LIFT
PARTS DRAWING

4/4/2019



NOTE: WHEN ORDERING REPLACEMENT PARTS, PLEASE SPECIFY PART NUMBER _____ AND COLOR _____.

PART NO.	PART DESCRIPTION	QTY. REQ.
12A-1	ELECTRIC LIFT UNIT COMPLETE	1
12A-2	VERTICAL SLIDE RAIL	2
12A-3	VERTICAL SLIDE RAIL SCREW	10
12A-4	50mm CONFIRMATE SCREW	4
12A-5	POWER TRANSFORMER	1
12A-6	MAIN WIRING HARNESS WITH SWITCH	1
12A-7	SWITCH ENCLOSURE	1
12A-8	SWITCH ENCLOSURE SCREW	4
12A-9	CABLE CLAMP W/SCREW	3
12A-10	ADJUSTABLE ADHESIVE CABLE CLAMP	2
12A-11	CAM LOCK PIN	6
12A-12	VELCRO STRIP	2