

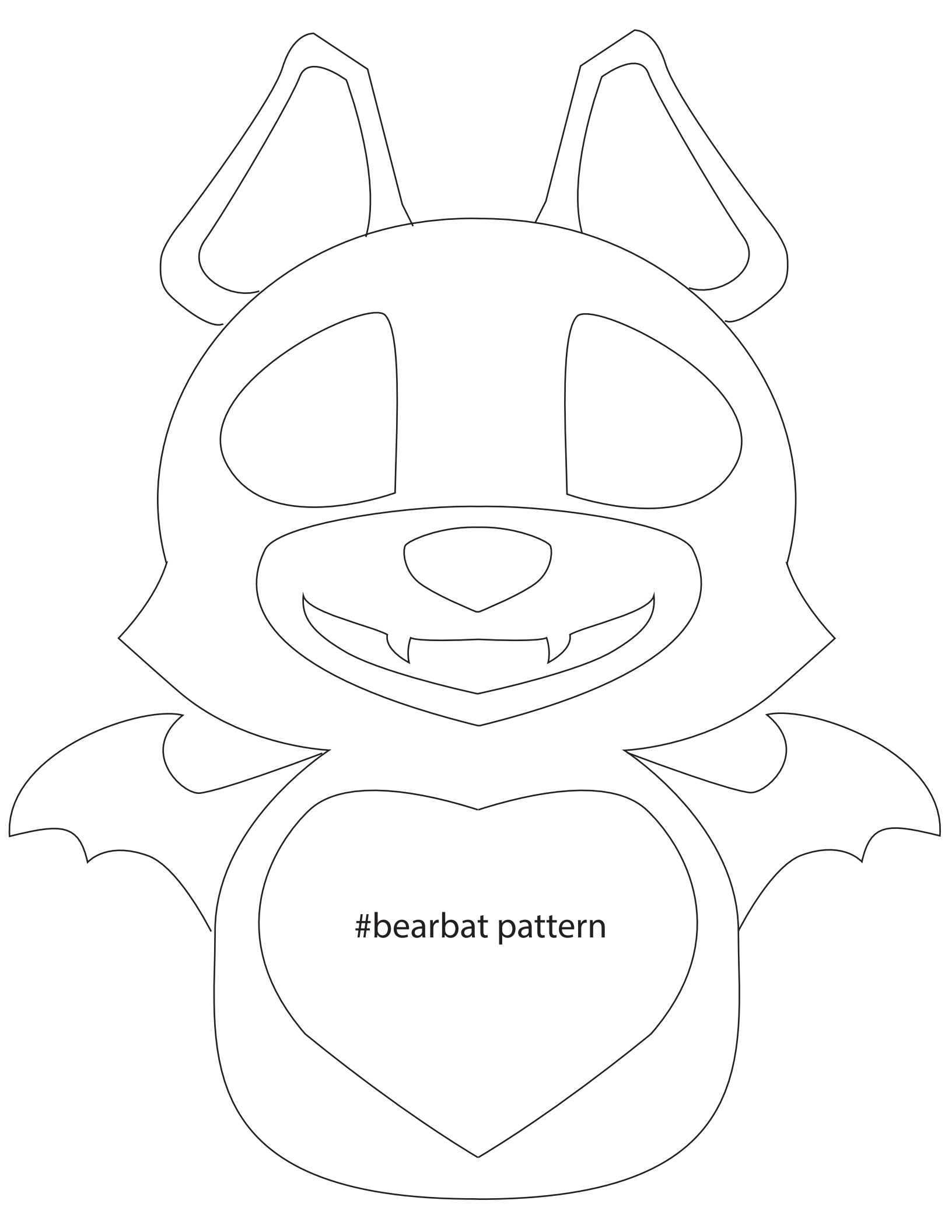


## Create your own #bearbat Plush Doll and you can win a NEW Sewing Machine!

---

### Official Rules:

- 1) No Purchase Necessary. Download the official #bearbat pattern here:  
<http://www.sewingmachinesplus.com/media/email/2016-web-september-national-sewing-month/batbear/bat-pattern-complete.pdf>
- 2) Cut out and create your #bearbat plush pattern!
  - a) Be as creative as you'd like when selecting your fabrics.
  - b) Decorate! Use buttons, ribbons, anything! Make your bat bear uniquely yours!
  - c) 1 entry per person, get your children and grand children involved!
- 3) Take pictures of your completed #batbear plush and submit before October 21, 2016!
  - a) Email pictures to: [Contests@sewingmachinesplus.com](mailto:Contests@sewingmachinesplus.com)
  - b) Include your name, city, email, and phone (optional) and a brief description of your #bearbat.
  - c) Voting will start October 22, 2016 via Facebook. So follow SewingMachinesPlus.com on Facebook to vote!
  - d) The winner will be announced October 31. 2016!



#bearbat pattern

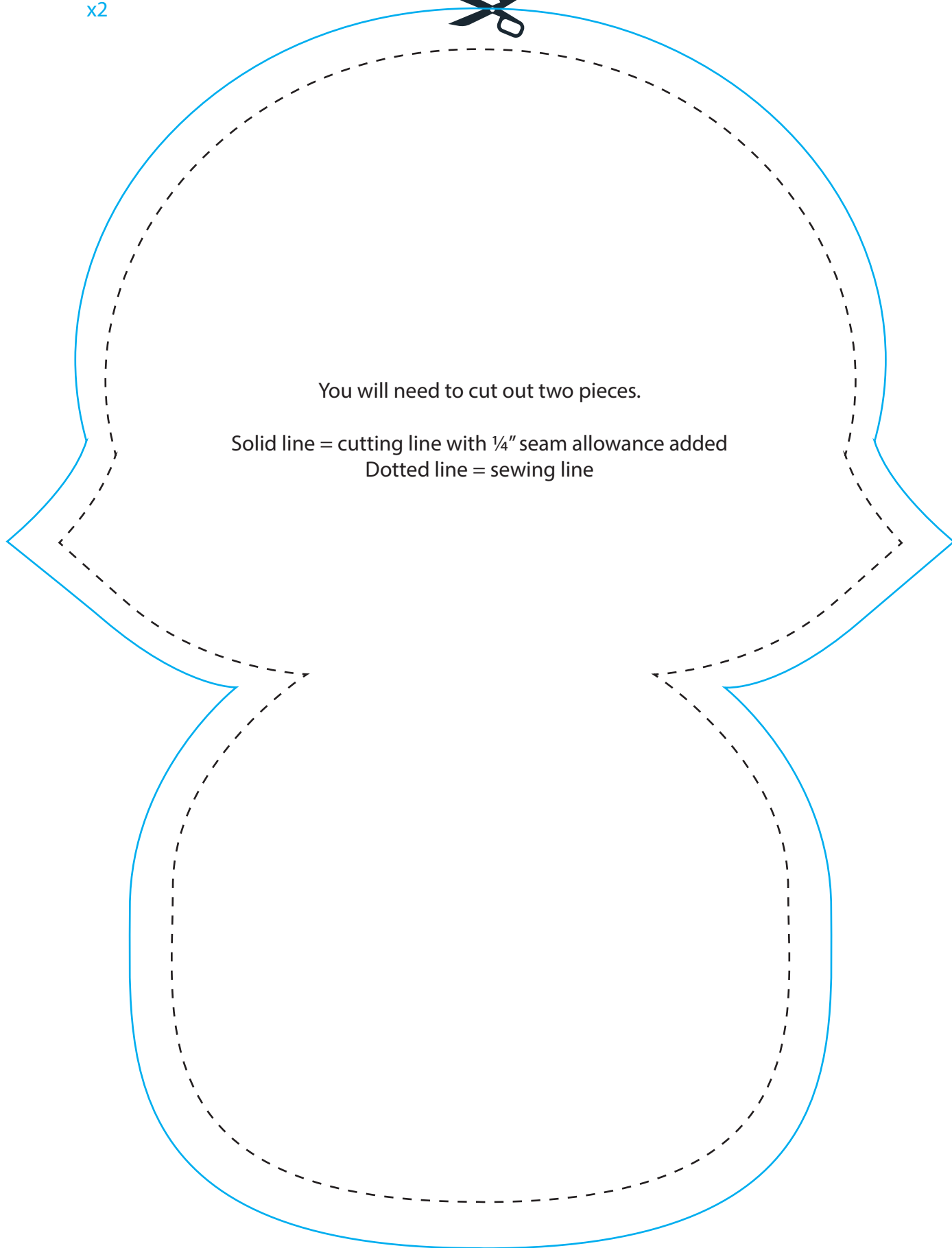
Body Front & Back Shapes  
x2

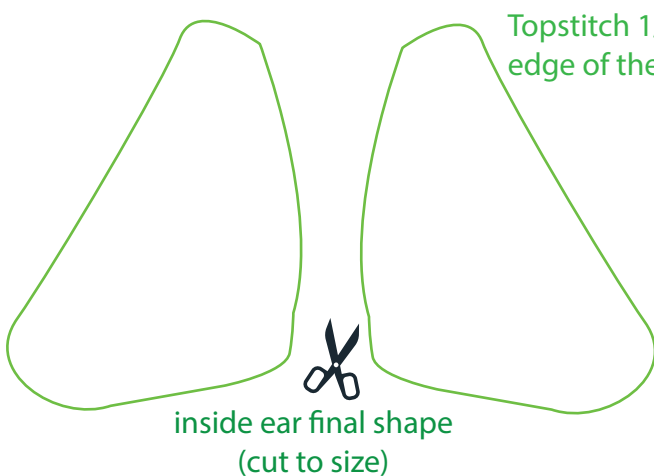
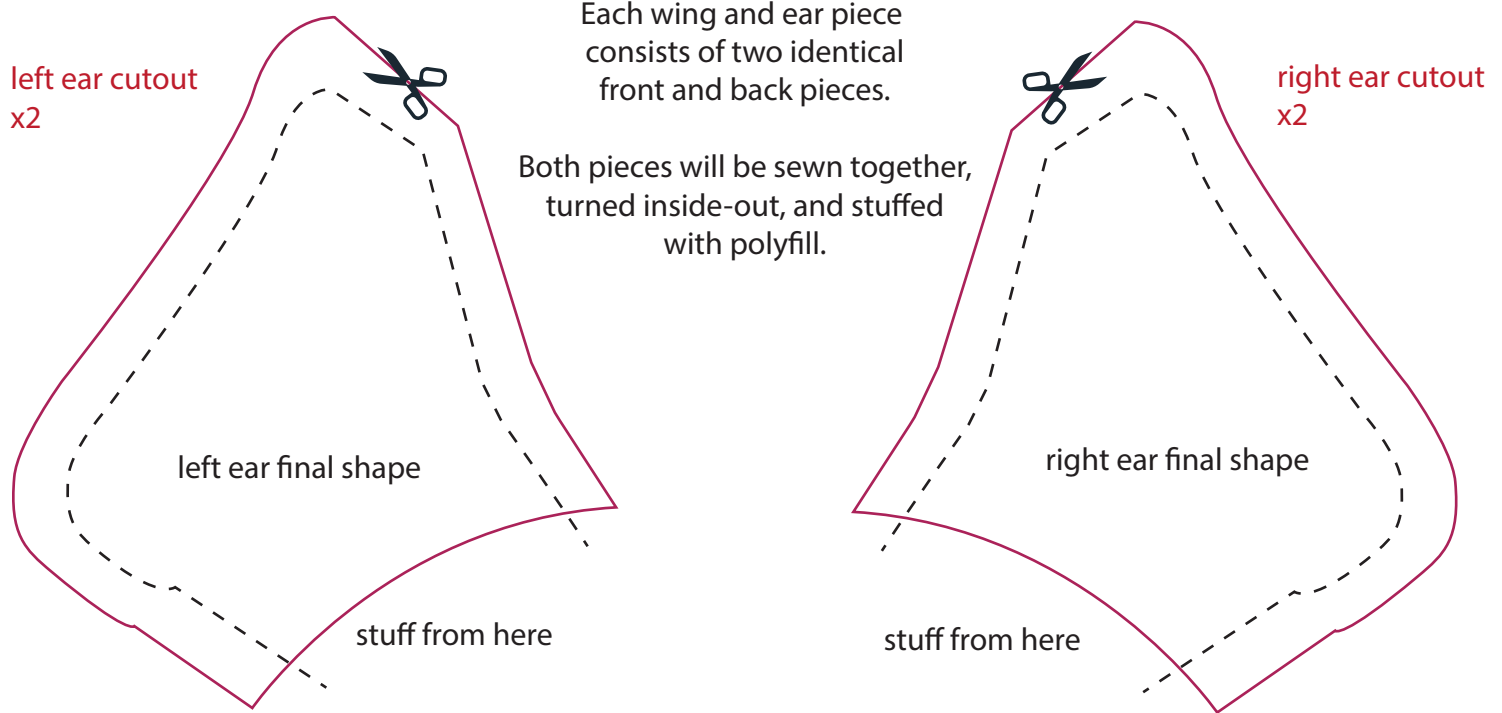
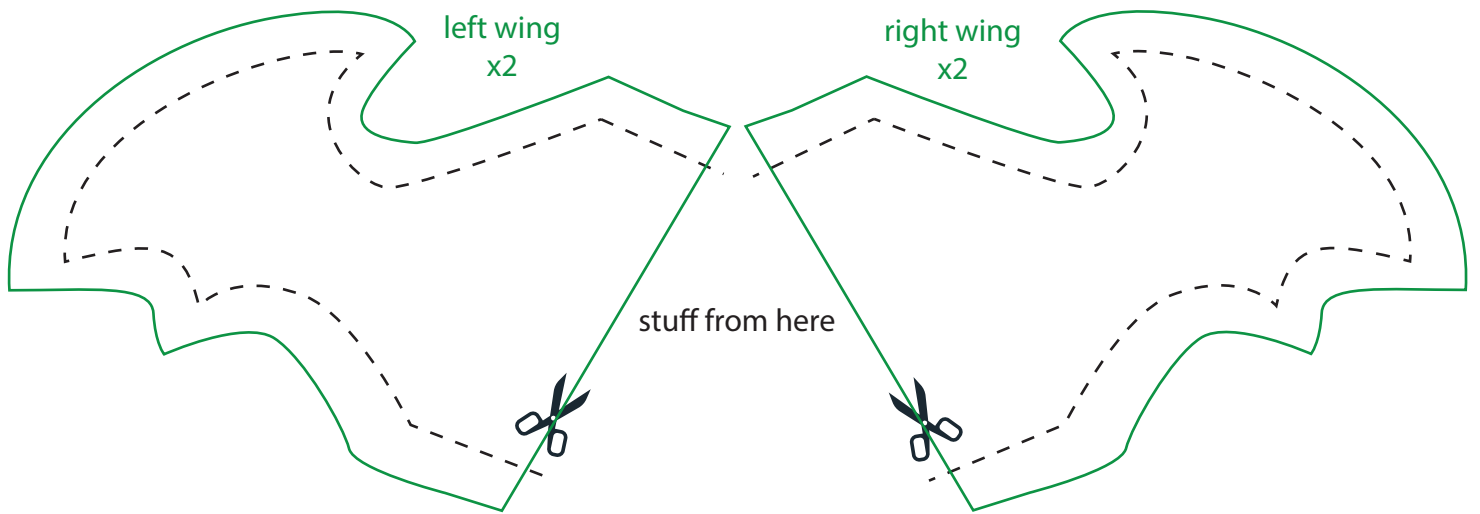


Cut Line

You will need to cut out two pieces.

Solid line = cutting line with  $\frac{1}{4}$ " seam allowance added  
Dotted line = sewing line

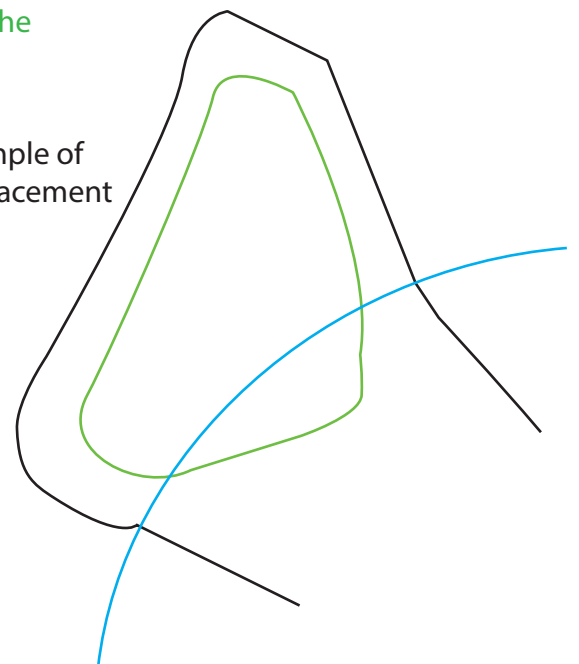




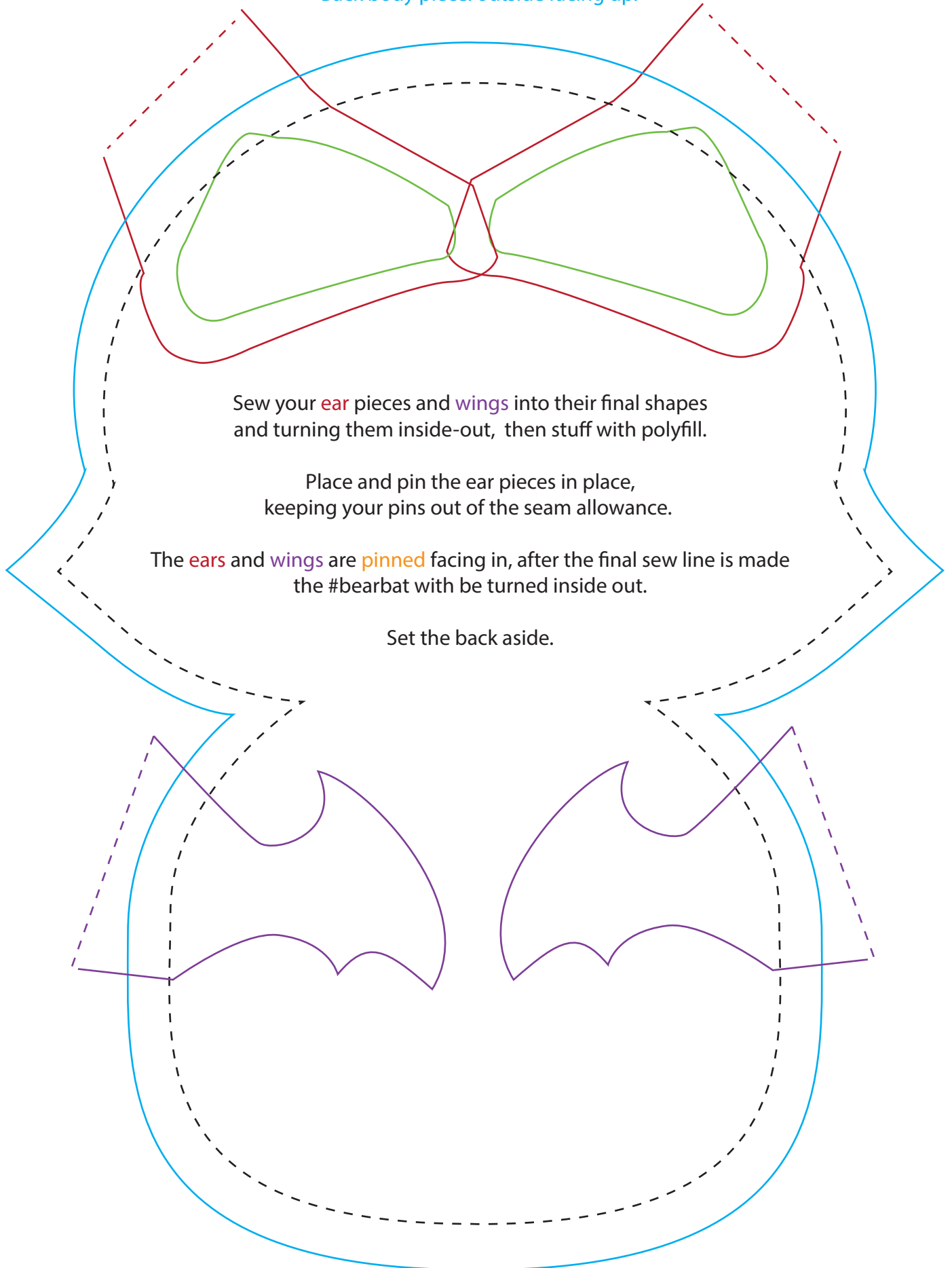
Cut the **inside ear shape** out and sew to the front ear piece cutout on both sides before sewing both ear pieces together.

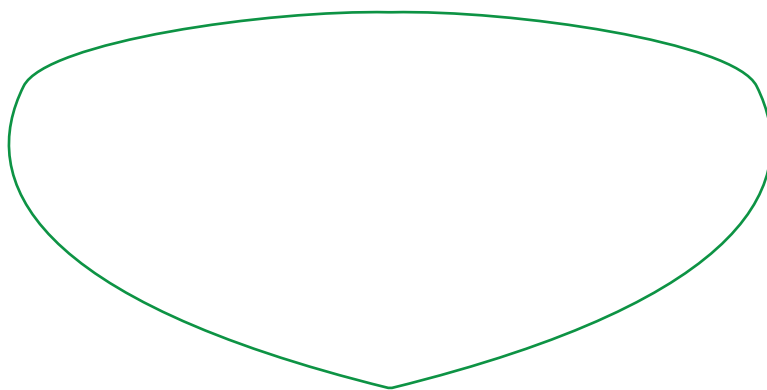
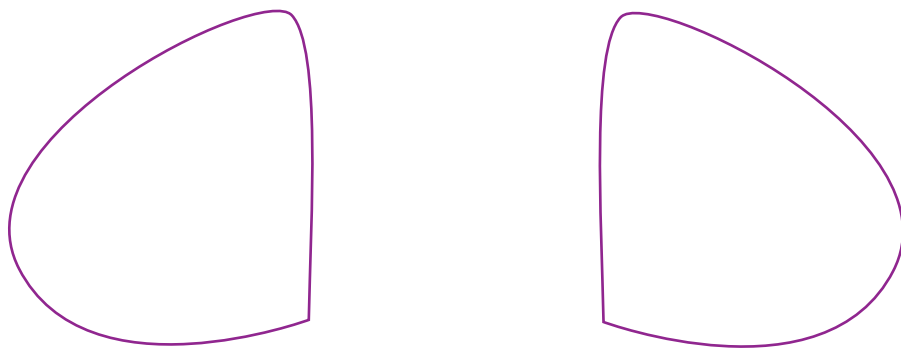
Topstitch 1/8-1/4" away from the edge of the inner ear piece

example of final placement

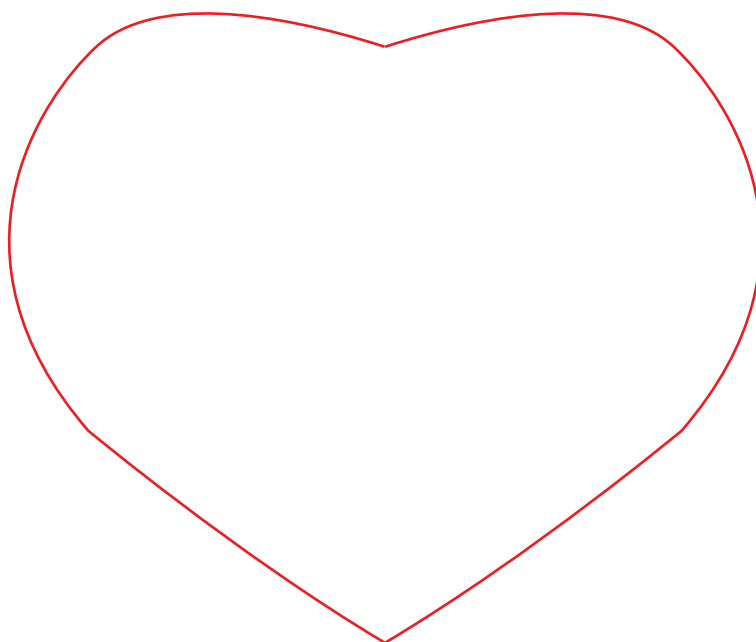
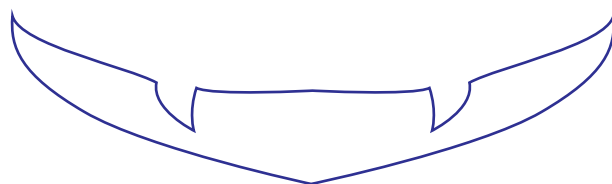


Back body piece. outside facing up.





cut all pieces  
to size



Next you will sew the snout, nose, and mouth together.  
You have two options for the snout and mouth assembly.

1. You can cut the mouth out of the snout piece and add white felt to the back of the snout.

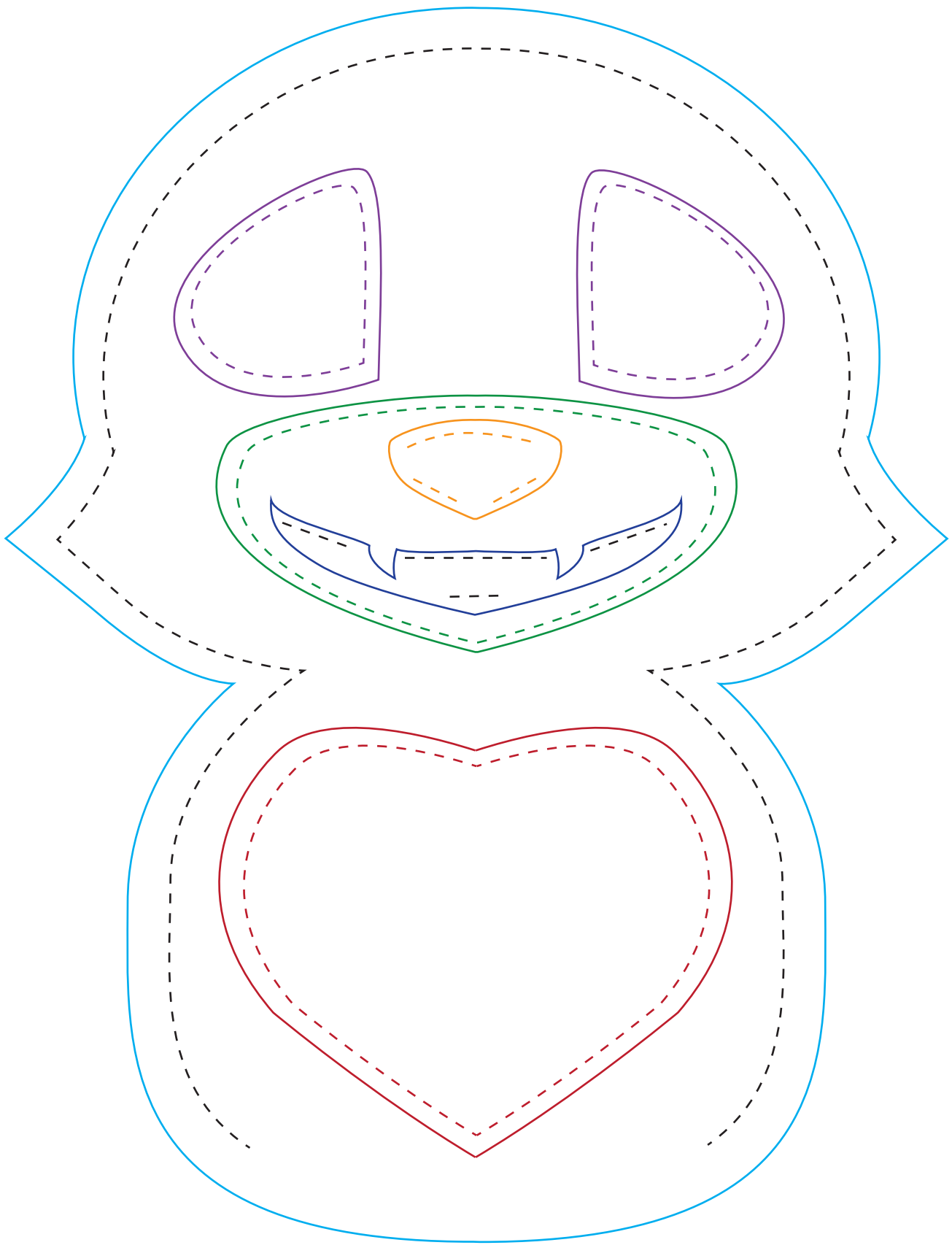


2. Or you can cut the mouth piece out of whatever color you desire and sew it on to the snout.



After sewing all three pieces together, place it on your front body panel and sew in place.  
Add 'topstitch 1/8-1/4" away from the edge of each piece.

Front body piece. Right side up.



With the front body piece facing up place your face pieces in position and sew them into place.  
keep the final sew line in mind when you make your placements.  
Topstitch 1/8-1/4" away from the edge of each piece.

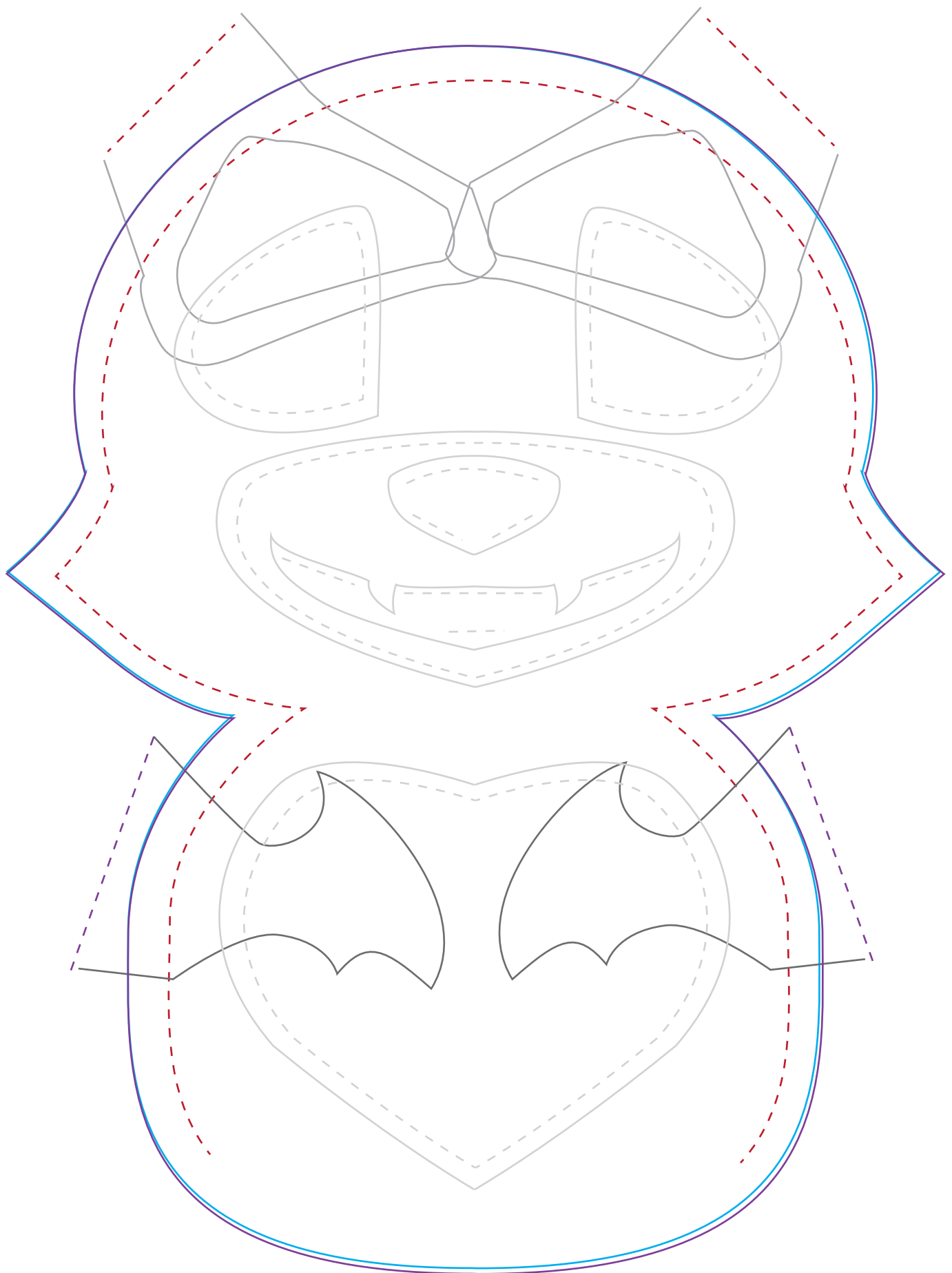


Completed back piece  
back side with ears and wings  
facing up.

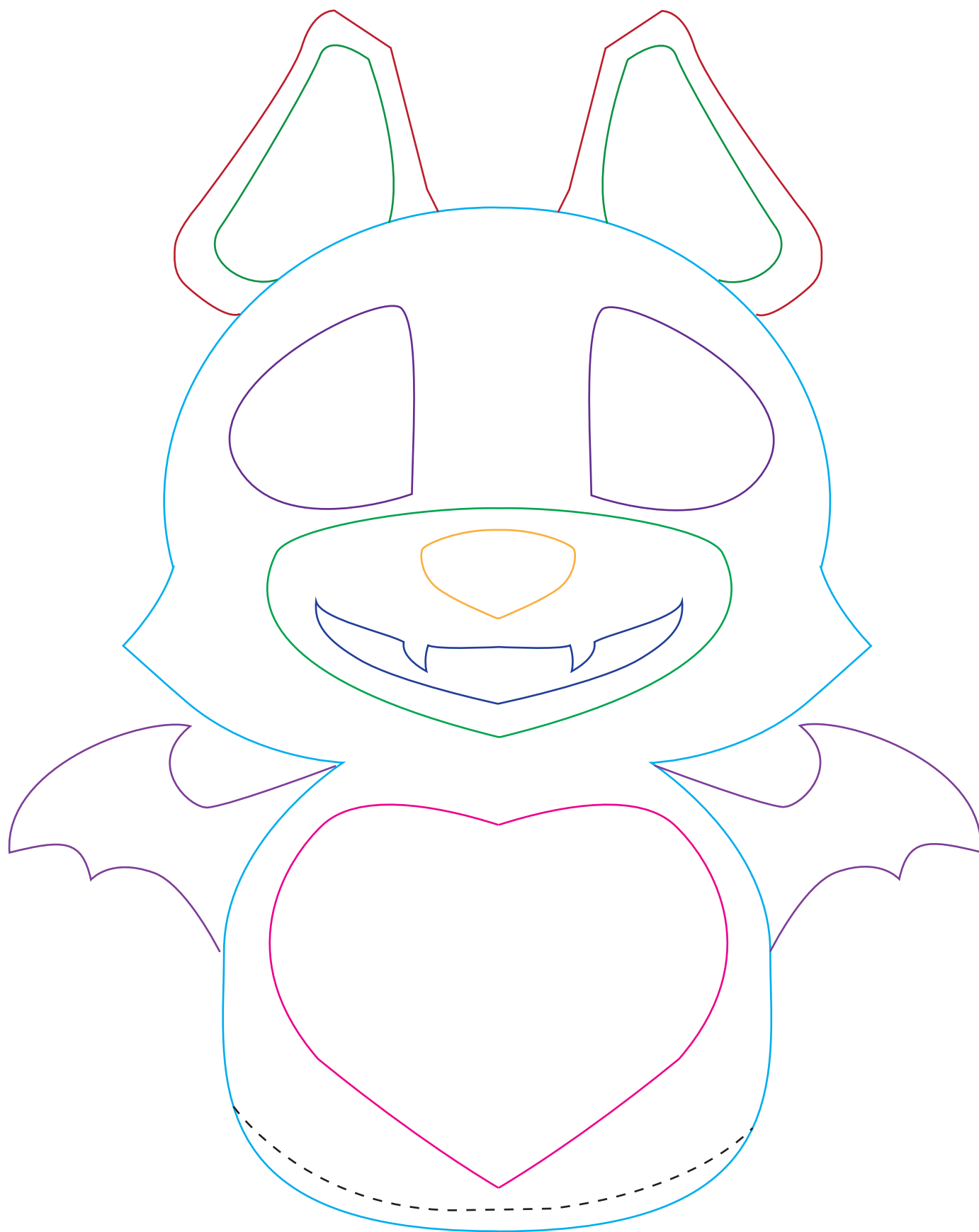
Completed front piece  
face pieces turn down.  
(shown in grey for position purposes)



Ater completing both side, place your front piec on top of your bac piece with the outsids facing in.



Carefully **pin** both pieces together, making sure both **top** and **bottom** pieces are perfectly aligned.  
Sew together with a  $\frac{1}{4}$ " seam allowance, starting and stopping at the hash marks.  
Back stitch when starting and stopping for reinforcement.



Carefully pull your #bearbat right side out from the opening on the bottom and stuff with polyfil to your delight. When you are done, sew the bottom shut. You are now a proud owner of a #bearbat

