

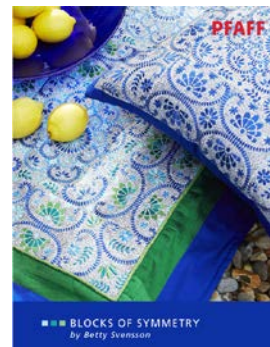
## Embroidered Summer Dress

These beautiful designs will bring to mind exotic sundrenched places on other shores! Use them to decorate items for your home or embellish a breezy spring dress as we have done. You will love the many options available to you with this collection that have the flavor and versatility of ceramic tiles that all fit together into one masterpiece.

Choose a free flowing fabric for your dress (we used a light weight summer wool) and enjoy making this simple pattern into something far from ordinary.

This McCall's dress pattern (6553) with its unstructured, free flowing lines seemed to lend itself so well to the summer-like embroidery.

Using the *creative*™ Deluxe Hoop 360 x 200 will be ideal because you can stitch out 2 designs in one hooping. You can then use the same hoop or a smaller hoop for the final design.



### Supplies:

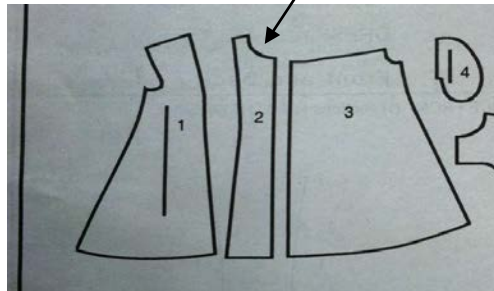
- *creative*™ Deluxe Hoop 360 x 200 412944502
- Adjustable Guide Foot with IDT™ System 820677096
- Dynamic Spring Foot 6D 820991096
- INSPIRA™ Whisper Web Mesh stabilizer 620111296
- INSPIRA™ embroidery needles 90/14 620099496
- McCall's pattern 6553 in your size or the pattern of your choice
- Fabric and notions according to pattern
- Robison-Anton Rayon 40 wt. embroidery thread in 4 colors
- Bobbin with bobbin thread
- Sewing thread





## Prepare:

- Attach embroidery unit and Dynamic Spring Foot to your **PFAFF®** sewing and embroidery machine; insert a new **INSPIRA™** embroidery needle, size 90.
- Thread the top of the machine with first color to be used in embroidery design.
- Insert the filled bobbin.
- Hoop the *creative™* Deluxe Hoop with two layers of Whisper Web Mesh stabilizer.
- Load the free design onto your machine.





## Directions:

1. Cut out the dress pattern on your fabric as directed by the pattern instructions with one exception: on the center front. Please cut this piece out 1" wider to allow for the embroidery to draw in the fabric a bit.



2. Mark the long center front line of this fabric pattern piece by folding and pressing. Place a pin on the folded line to mark about ¼" below the center neck SEAM LINE.
3. Load design **190461000** into the Embroidery Edit screen.
4. Activate **Rotate** . Use the stylus and drag on the screen to rotate the design 45° so that the leaf spray is at the bottom corner as shown.
5. Activate **Move** . Click and drag to move the design to position **0.0 / 85.0**.
6. Touch **Duplicate**  to add another of this design into the hoop. Overlap the bottom of the first design with the top point of the second design by moving the second design to **0.0 / 62.0**.
7. Attach the hoop loaded with stabilizer onto the embroidery unit.
8. Go to **Embroidery Stitch-Out** .



9. Use **Precise Positioning**  to insure that you position the dress front properly on top of the hoop.
  - Place the first crosshair on the screen at the top point of the top design.
  - Align the placement pin from step 2 with the needle position in the hoop.
  - Insure that the pressed vertical line on the dress front is lined up with the vertical markings on the hoop.
  - Secure with a few straight pins to hold this position temporarily.
  - Touch **OK**  to go back to Embroidery Stitch-Out.
10. Activate **Baste** ; baste dress front to stabilizer. Remove pins and stitch the designs.
11. Trim the stabilizer close to the stitching and trim loose threads from the back of the embroidery since this is a garment to be worn against the skin.
12. Load a single design into the machine and re-hoop with a double layer of Whisper Web Mesh.
13. Use Precise Positioning  to place the third and final design so that it overlaps the bottom stitched design in the same manner as the first two designs.
14. Stitch the design. Trim the stabilizer and loose threads. Press.
15. Place the original pattern piece on the embroidered piece and cut accurately.
16. Finish constructing the dress according to the pattern instructions and serge the raw edges of the hem line.
17. Use your Adjustable Guide foot with IDT™ system to topstitch a simple turned up hem.

Put on your lovely dress and enjoy it somewhere in the sunshine!