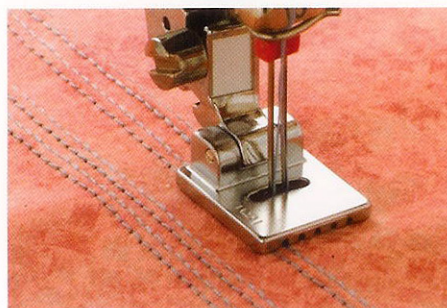


ALL ABOUT the pintuck foot

Make corded or uncorded tiny tucks with the 5-groove pintuck foot and a twin needle. The size of the pintucks will be the size of the grooves on the bottom of the foot. Choose the size of the twin needle by the width between the grooves. Use the cord guide bobbin cover to guide the cord while sewing.

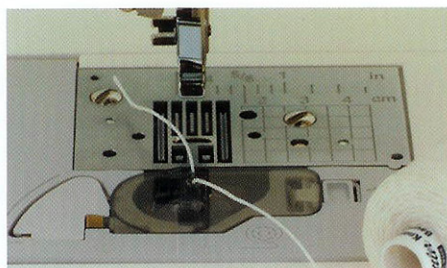
uncorded pintucks

For uncorded pintucks, just place the fabric under the foot and begin stitching. A slightly raised tuck will appear between the double row of stitching. Position the first row to the right or left of center under a groove and sew again.



corded pintucks

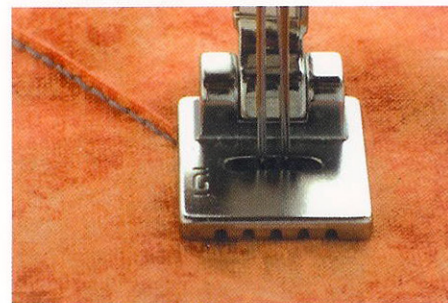
For corded pintucks, replace the standard bobbin cover with the Cord Guide Bobbin Cover. Thread the cord from the top and then up through the notch in the cover.



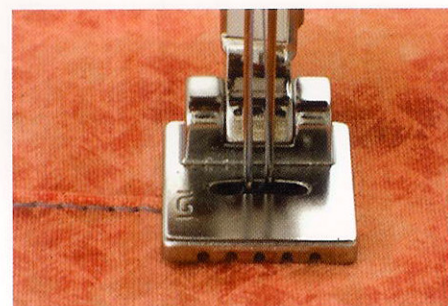
Center the cord under the foot and begin sewing. The cord should be carried in the stitching between the two needles.

turning corners

To turn corners, stitch to the point for the corner and leave just the tips of the needles in the fabric. Turn the fabric 45° and take one stitch.



Turn the fabric again 45°, now at a right angle to the original stitching and continue sewing. Make sure the cord is continuing to be caught within the stitching.

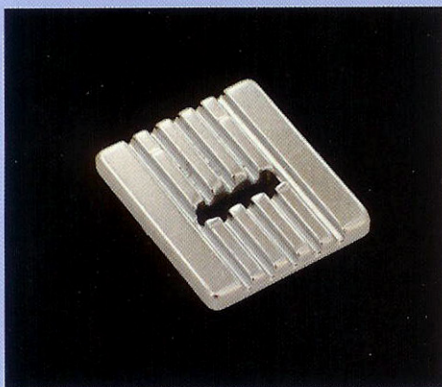


To stitch additional rows of pintucks, place the first row to the right or left of the center in one of the grooves. The raised pintuck will follow along in the groove guiding your stitching.



TIP

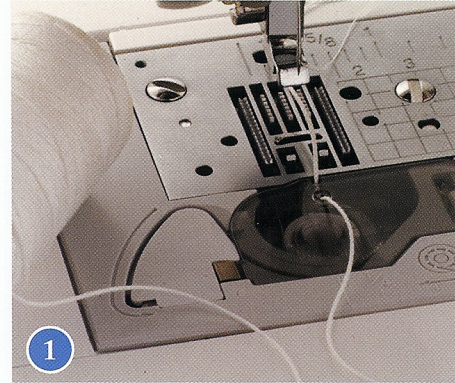
A size 2.0/80 twin needle or smaller is the correct size twin needle to use with the 5-groove pintuck foot. There are many larger-sized twin needles however you won't get quality results when pairing them with the 5-groove pintuck foot.



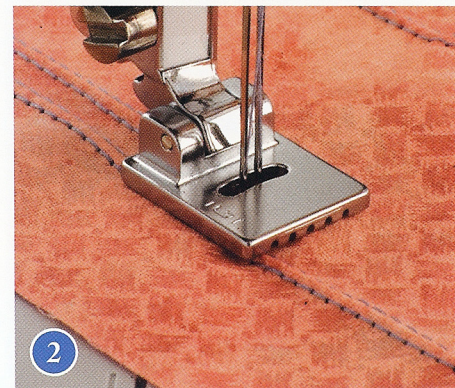
pintucks

A raised tuck created with a twin needle and the pintuck foot. Can be corded or uncorded.

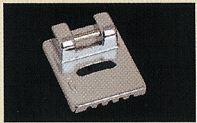
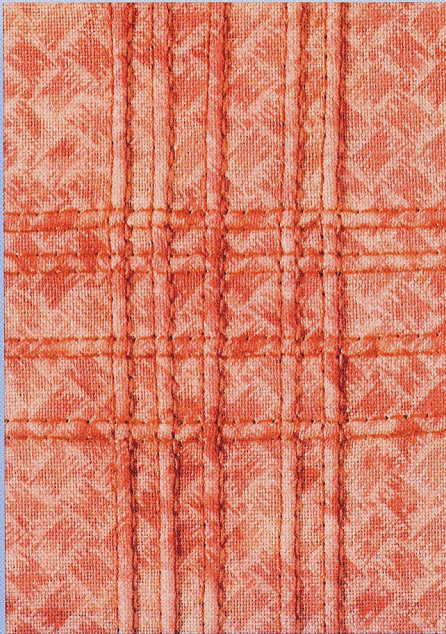
1. Following the machine instructions, thread your sewing machine for a twin needle. For corded pintucks, replace the standard bobbin cover with the cord guide bobbin cover and thread the cord from the top and up through the slot. (#1)



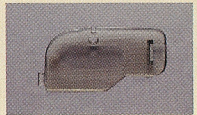
2. Attach the pintuck foot and sew making sure the cord is caught in the stitching. Sew additional rows by placing the previous row of stitching in one of the side grooves. (#2)



3. Review the pintuck foot information to understand turning corners with the pintuck foot. Turn corners or cross rows of pintucks to achieve the look desired. (#3)



**Pintuck Foot
and**



**Cord Guide
Bobbin Cover**

Stitch: *Straight*

Width: *Pre-set*

Length: *Pre-set*

Tension: *Preset*

Fabric, needles, notions required:

Stable fabrics; twin needle, size 2.0/80; all-purpose sewing thread for the needle and bobbin; gimp cord

TIP

You may find numerous sizes when choosing a twin needle from 1.6/70 to 6.0/100 with many sizes in between. The first number represents the millimeter distance between the needles and the second number denotes the size of the needle itself. Find the right size twin needle for the pintuck foot by placing the needle in the grooves on the bottom of the foot. If the distance between the grooves equals the distance between the needles then that is the correct needle to use with that particular pintuck foot.