



Fashion Sewing Cabinets of America
 1453 West 105 North, Orem, UT 84057
 Toll Free: 800-658-8795
 Fax: 801-756-5758
 www.FashionSewingCabinets.com

8300

Quilter's Cloud Nine

List of Hardware

- 4 x 1-1/2" Bolts
- 5 x Black Caster Screws
- 3 x Non-Locking U-Casters
- 2 x Locking U-Casters
- 2 x 5/8" Wood Screws

List of Tools Needed

- #2 Phillips Screwdriver

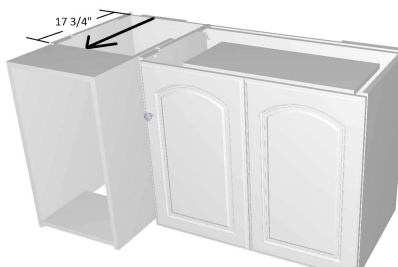


Read through all steps before proceeding to assembly.

1. With the box sitting upright and both ends open, remove the corner cardboard from around the top of the cabinet, then slide the unit out on the cardboard shipping corners that it is sitting on. Now cut the tape holding the bottom cardboard together and remove the side pieces.

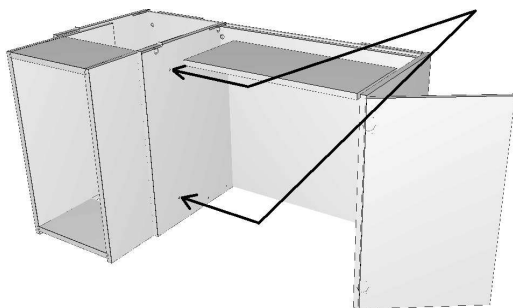
NOTE: the Drawer Bank slides forward and will not be attached. Be careful in the next step!

2. Remove only the top three drawers, noting their locations.
3. Gently tilt the unit forward enough to remove the back corner cardboard, then gently lower the back and tilt back to remove the front corner board and finish by lowering the front.
4. Attach the Drawer Bank:
 - Remove the last drawer on the bottom, to expose the insert nuts inside the walls.
 - Using the top of the Drawer Bank, pull it out until the bolt holes line up with the insert nuts and hand install two 1-1/2" bolts on one side then two on the other side.

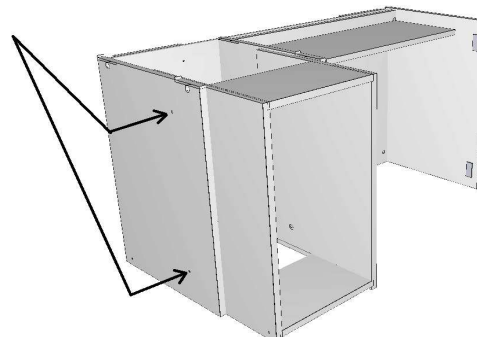


- Using a #2 Phillips screwdriver, tighten the bolts keeping the tops as flush as possible. See diagrams below.

1-1/2" Bolts

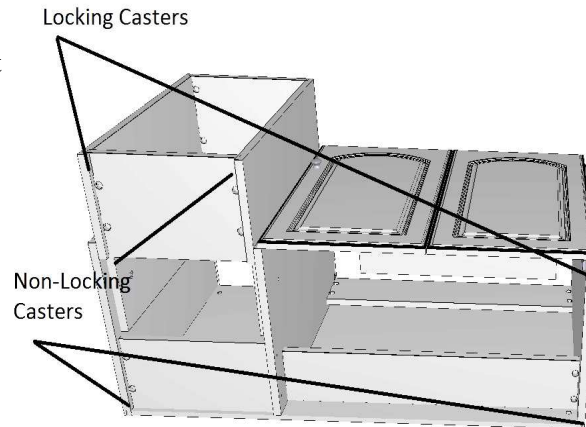


Inside Panel (Right)

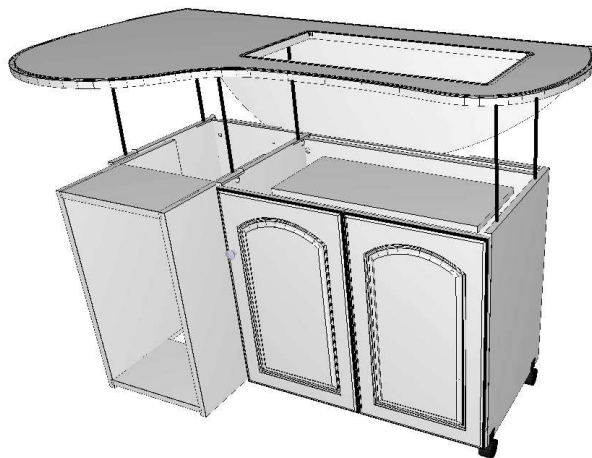


Outside Panel (Left)

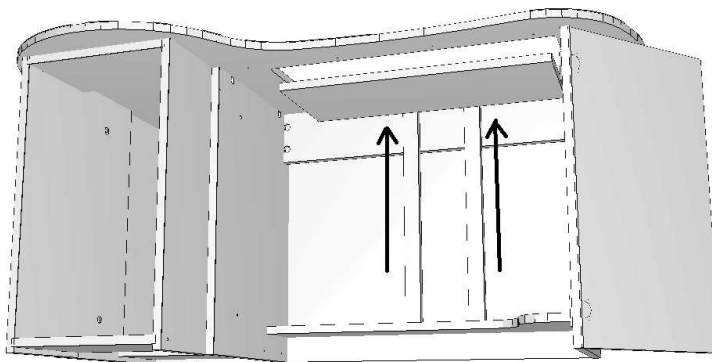
5. Close the door and lay the assembly on its back to install the casters. The two locking casters should be installed in the front by the door for ease of access when locking and unlocking. Each caster has a large hole and a small hole. The small hole should be positioned inside the cabinet. Line up the holes in the cabinet sides with the holes in the casters and insert the caster screw through the large hole of the caster, through the cabinet and screw into the small hole of the caster. Tighten the screw until it is snug.



6. Lift the cabinet and set it upright on its casters.
7. Unpack the top, holding the leaf and top together for easier handling until the next step.
8. With help, let the leaf hang freely, lining up the cam bolts with the cam locks that have been factory installed in the cabinet, lower the top onto the cabinet, tighten the six cam locks using the #2 Phillips screwdriver by turning each one approximately 180 degrees or until snug.



9. Secure the lift to the top using two 5/8" wood screws through the lift's top plate to the cabinet top.



10. Restore the drawers to their original locations.
11. If purchased, install the module rack on the left outside wall referring to the instructions that come with it.
- Enjoy your new sewing cabinet!