



Baby Lock's

SNAPPY holidays

Snappy-Sew Project Round-Up

From Baby Lock's Favorite Bloggers

baby lock

FOR THE LOVE OF SEWING



“Stitch a Girlfriend Wristlet”

by Nancy Zieman at NancyZieman.com/Blog



Stitch a clever wristlet for your friends this season. Choose a trendy double face quilted fabric, add snappy trims, and within less than two hours of time, you will complete a personalized gift! Finished measurements 8-1/2”L x 6”W x 1/2”D

Created by: [Nancy Zieman at NancyZieman.com/Blog](http://NancyZieman.com/Blog)

Baby Lock Machine: Ellisimo Gold

SUPPLIES:

- 1/4 yard Double Face Quilted Fabric. Cut two 9” X 11” pieces.
- 1/8 yard of Accent Fabric. Cut two strips: 1-1/4” X 18” and 2-1/2” x 16”.
- Create-a-Strap, 1-1/4” and Create-a-Strap, 5/8”
- 9” zipper
- Magnetic Snap
- Swivel Latch, 3/4” Glossy Nickel
- Ribbon in two widths: 1/2 yd. 3/8” width and 1/2 yd. 5/8” width
- 1 Spool all-purpose thread



Baby Lock's

SNAPPY holidays

Snappy-Sew Project Round-Up

From Baby Lock's Favorite Bloggers

baby lock

FOR THE LOVE OF SEWING

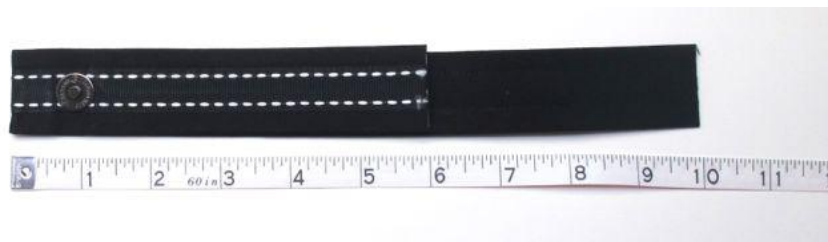


INSTRUCTIONS:

1. Fuse and stitch straps & tab
 - Fuse 5/8" Create-a-Strap to wrong side of 18" x 1-1/4" strip.
 - Fuse 1-1/4" Create-a-Strap to wrong side of 16" x 2-1/2" strip.
 - Fold and press along perforation.
 - Center ribbon over edges. Edge stitch along ribbon edges.
2. Create tab
 - Add a magnetic snap, on ribbon side, of the 1-1/4" (wider) strap 5" from one end.



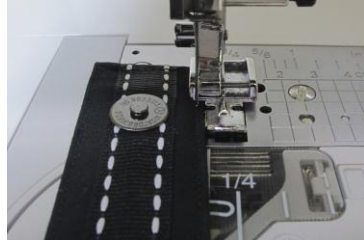
- Fold tab, ribbon side out, 6" from end with snap.



- Edge stitch folded sections of tab along each edge, using zipper foot.

Baby Lock's
SNAPPY holidays
Snappy-Sew Project Round-Up
From Baby Lock's Favorite Bloggers

baby lock
FOR THE LOVE OF SEWING



3. Create strap

- Cut narrow strap into two pieces: 16" and 2".
- Thread the 16" strap through the opening in the swivel latch. Turn under 1/4" at each short end, butt folded ends near swivel hook, and topstitch to secure straps together.



4. Prepare zipper

- Cut two 2" squares from accent fabric. Fold each square in half.
- Position half squares at each end of the zipper with folds to the center, allowing 7-1/2" opening of the zipper.
- Edge stitch along folds.
- Trim off excess zipper tape beneath fabric ends.



Baby Lock's
SNAPPY holidays
Snappy-Sew Project Round-Up
From Baby Lock's Favorite Bloggers

baby lock
FOR THE LOVE OF SEWING



5. Assemble wristlet

- Fold 2" x 5/8" strap in half, creating a loop.
- Position loop 6"
- Center and pin single layer of tab to one narrow end of a fabric rectangle.
- Topstitch single layer of tab to fabric along each edge. (The double layer of the tab will not be stitched to the quilted fabric.)
- Add remaining half of magnetic snap 1-3/4" from narrow end of second quilted rectangle.



- With right sides together, stitch zipper to top edges of each rectangle. Turn right side out and topstitch along fold.





Baby Lock's

SNAPPY holidays

Snappy-Sew Project Round-Up

From Baby Lock's Favorite Bloggers

baby lock

FOR THE LOVE OF SEWING



- Open zipper. Meet fabric edges right sides together. Stitch side seams and lower edge. Turn right side out.



- Clip strap to loop. Close tab with snap, slightly tucking fabric under tab.



Baby Lock's

baby lock

FOR THE LOVE OF SEWING

SNAPPY holidays

Snappy-Sew Project Round-Up

From Baby Lock's Favorite Bloggers



Enjoy!