

Hibiscus Table Topper



Table toppers are a great way to freshen up your home décor. Using different embroidery designs and fabrics, you can make a table topper for every occasion. In this project, we'll cover how to precisely position your embroidery using the Baby Lock Destiny. The Destiny has four helpful built-in placement tools. These instructions focus on the positioning stickers. You can use whichever placement tool works best for your project.

Skill Level: Intermediate

Created by: Diane Kron, Software and Embroidery Project Manager

Supplies:

Baby Lock® Destiny Sewing and Embroidery Machine
Palette 10
Hibiscus design (downloaded from Baby Lock website)
Built-in designs from the Scroll Style category
3 yards white linen cotton fabric 54" - 60" wide

Positioning stickers for the Baby Lock Destiny
Madeira® sewing and embroidery thread
Baby Lock Tear-Away stabilizer
Temporary spray adhesive
Basic sewing supplies

Finished Size 45" x 45"

Instructions:

Embroidery

1. Download the hibiscus design from the Baby Lock website and save to a



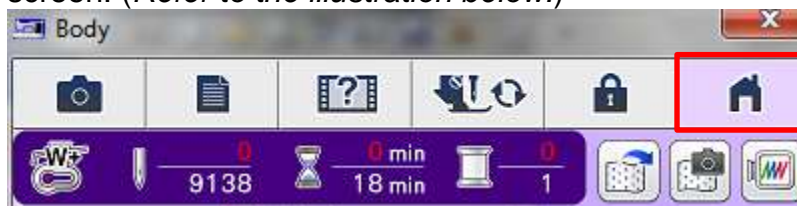
thumb drive.

2. To retrieve the design, follow the next set of steps:
 - Turn on the Destiny sewing and embroidery machine.
 - Attach the thumb drive to the machine.
 - Click on the thumb drive icon on the lower right side of the panel (*as shown in the following illustration*).
 - Select the Hibiscus design from the drive.



- Click on Set.
 - Click on Embroidery.
3. Cut the fabric in half to create two equal sized pieces (approximately 60" x 54"). These will be cut down to size after embroidery has been completed.
 4. Determine the center on one of the sections and mark using a positioning sticker.

5. Hoop the stabilizer using the largest hoop along with the marked white piece of fabric centering the positioning sticker in the hoop.
6. Embroider the design using Madeira thread colors.
7. Remove the embroidered section from the hoop.
8. Click on the Home icon to clear the screen and get back to the opening screen. *(Refer to the illustration below.)*



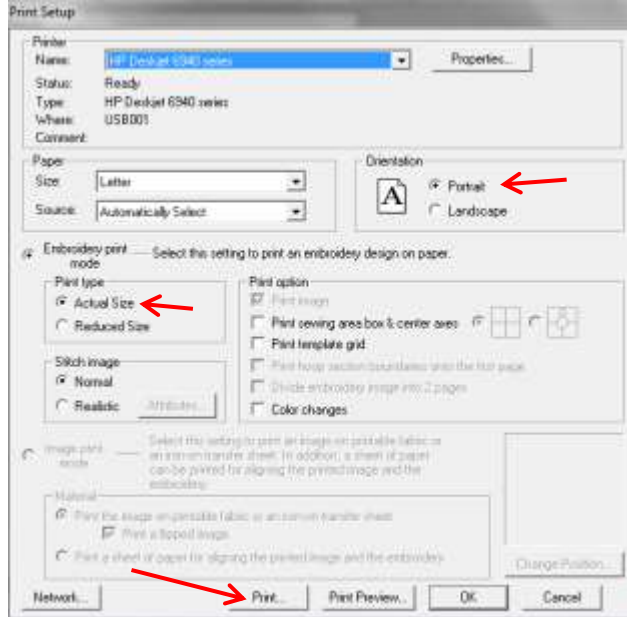
9. Select the Scroll Styles Category, retrieve design #008 and click on Set.
 - Click on the thread color chip.
 - Select the new thread color from the list. In this field, you can create your own list or choose from the 64 colors that are shown in the illustration. Click on OK. Use one of the same green colors that were used in the hibiscus flower.



- Once the re-coloring is complete click on Embroidery.
10. To create a template of the design for accurate placement on the embroidered section, the Palette 10 software will be used. Follow the next set of directions:
 - Click on the Memory icon to save the design.
 - Select the thumb drive as the saved location.
 - Open the Palette 10 software program.



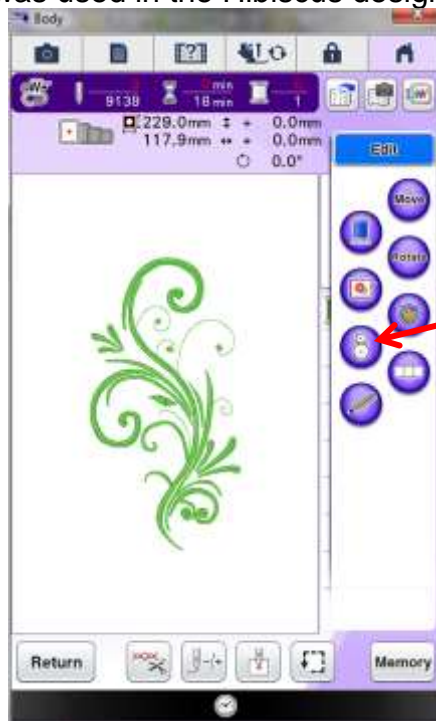
- When the Wizard opens, select “Open Embroidery Design” (as shown in the above illustration).
- Go to the Removable Disk drive to retrieve the design.
- With the design on the workspace, click on File Print Set Up.
- Set the Print Type to Actual Size.
- Select Print to print a template of the design.



- Place a positioning sticker over the cross marks on the template.
 - Pin the printed template to the embroidery section close to the embroidered Hibiscus flower leaving a little space.
11. Hoop the stabilizer and spray with the temporary spray adhesive. Place the templated section in the center of the hoop. Attach the hoop to the embroidery unit.
 12. In the Embroidery field, click on Edit.



13. In the Edit field select the Positioning Sticker icon. The machine will locate the sticker and reposition the design according to the positioning sticker on the template (as shown in the following illustration). Remove the template. Set aside for later use.
14. Embroider the design while using one of the green Madeira threads that was used in the Hibiscus design.



15. Repeat these steps to embroider the remaining section of the table topper. If you have smaller areas that need to be filled in, use design #008 under the Scroll Style field. Print out a template for this design as in Step 10 and follow positioning and embroidery as in Steps 11-14.

Finishing:

1. Trim the embroidered and the plain white sections so both measure 46" x 46".
2. With right sides together, sew the two sections together leaving an 8" opening for turning while using a ½" seam allowance.
3. Trim the corners and turn right side out. Press.
4. Set the machine up for sewing and top-stitch ¼" around the outer edge to finish.

For other exciting projects like this one, visit our website at www.babylock.com

