

**PFAFF®**



expression™ **Blouse**

## You need

- PFAFF® expression™ Sewing Machine
- Burda pattern 8347 view C or your favourite sleeveless blouse pattern
- Fabric according to pattern
- Strips of silver fabric
- 14" (35 cm) Invisible zipper
- Sewing thread
- Rayon embroidery threads in silver and grey
- Fusible web
- Tear away stablizer
- Water soluble marker or chalk marking pen
- Pins
- Pearl cotton or fine cord

## PFAFF® Accessories

- |                              |            |
|------------------------------|------------|
| • Three-groove Cording Foot  | 820666-096 |
| • Seam Guide Foot with IDT™  | 820772-096 |
| • Sewing Star Foot with IDT™ | 820654-096 |
| • Invisible Zipper Foot      | 820474-096 |

You can find these and many other accessories in the PFAFF® Accessory Catalogue or on the PFAFF® website [www.Pfaff.com](http://www.Pfaff.com) for purchase at your nearest Pfaff Dealer.

## 1. Paper pattern

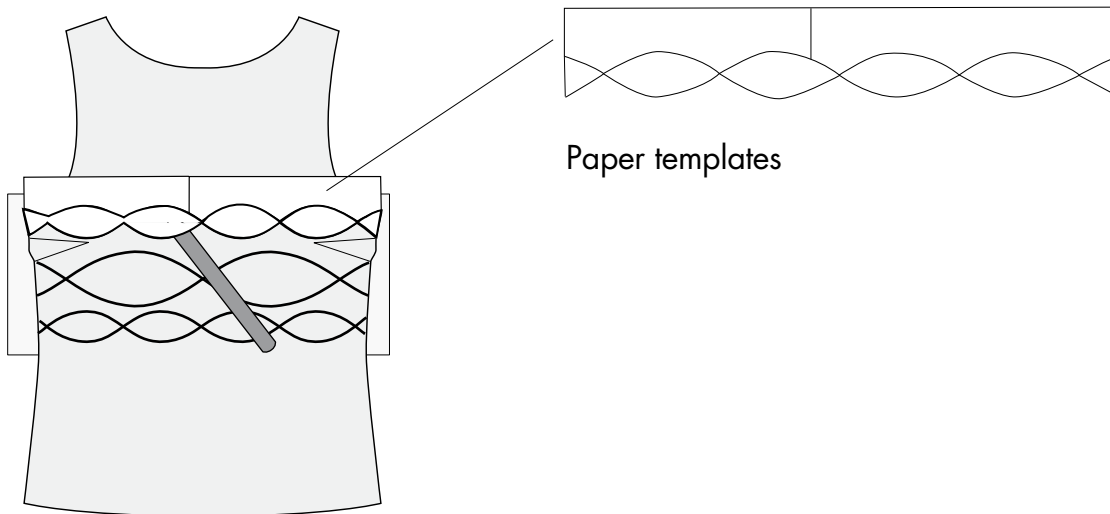
Cut out the required pattern pieces from the blouse pattern. Check your pattern to be sure seam allowances are included. If not, add 5/8" (1.5 cm) seam allowance.

## 2. Cutting Instructions


Cut out the fabric pieces for the blouse, following the instructions included with the blouse pattern. From the silver fabric cut 2 strips 1" (2.5 cm) x the width of the front piece.

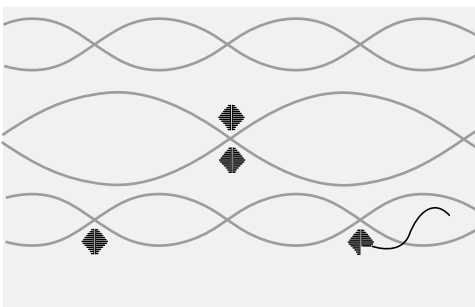
### 3. Embellishing


Print the templates included with these instructions. You may have to print two or three templates and tape them together depending on the width of your front piece. Cut the paper template piece as shown in the illustration. Use the templates to draw the shape of the curved lines on the front piece. If you have dark fabric use a chalk marking pen, for lighter fabric use the water soluble marker.






Snap on the Three-groove Cording Foot, thread the machine with silver metallic thread, choose a narrow satin stitch, place the tear away stabilizer under the fabric, place pearl cotton under the presser foot and sew along the marked lines. For instructions on using the Three-groove Cording Foot see the PFAFF® Accessory Catalogue.

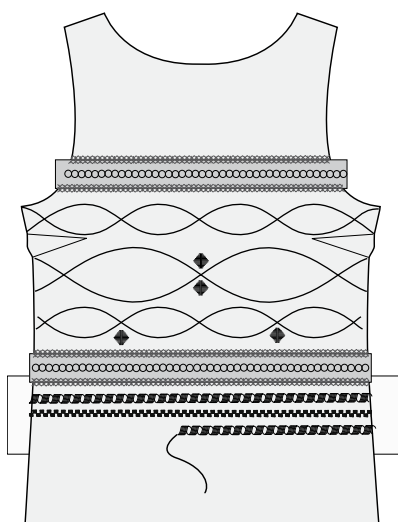
The little triangles are sewn with 2 single triangle satin stitches . The second triangle is a mirror image of the first ones.



Press fusible web on the wrong side of the two silver strips, remove the paper backing and press the strips 1" (2.5 cm) above and below the curved lines. Place tear away stabilizer under the area you are stitching. Snap on the Sewing Star Foot with IDT™, sew the strips in place covering the raw edges with a decorative stitch, we have used stitch .

Sew another decorative stitch in the middle of the strips, we have used stitch .

Sew three more rows of decorative stitches under the silver strips, keep a presser foot distance between the stitches. We have used these decorative stitches  ,  .



Remove the stabilizer.

## 4. Sewing

Finish sewing the blouse according to the sewing instructions in the pattern. Sew the bust darts but not the front darts. Use the Invisible Zipper foot to insert the zipper. Use the Seam Guide foot to assemble the blouse.

