

creative™ 4.0 Suit Decorations

Tips for creative™ 4.0 suit decorations

Sewing Supplies

- creative™ 4.0 sewing and embroidery machine
- Burda Pattern 8279 view C
- Suitable fabric – Light wool fabric, linen fabric, for amount see pattern.
- Rayon embroidery thread
- Bobbin thread
- creative™ 4.0 Embroidery Collection
- creative™ ELITE HOOP (260 x 200 mm)
- creative 4D™ Embroidery Software

Interfacing

- When making tailored garments, interfacing is the key to obtaining professional results. There are many different kinds of stabilizer available today, both fusible and sew-in. For best results, you will need a good quality fusible interfacing that is woven with a percentage of stretch. Select an interfacing that is slightly lighter weight than your fabric.

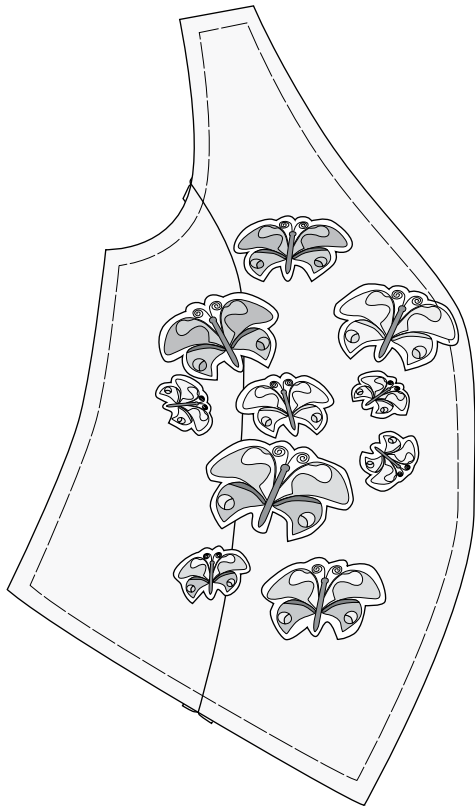
Preparations

- Cut out all the pattern pieces in your fabric and overcast all edges with a 4-thread overlock stitch to prevent fraying during the embroidering.
- To ensure that your garment retains its shape, apply interfacing to the whole front piece, the upper collar and all hems.
Tip: Follow the manufacturer's instructions for fusing the interfacing to the fabric. Holding the iron still for the recommended time will ensure a permanent bond.



Sew and Embroider

- Before embroidering, sew the front seams of the jacket and vest, press open.
- Select your design in your creative 4D™ Embroidery Software and print paper templates of the embroideries, mirror imaging some of the designs. We have used #1, 3, 5 and 7. Cut out the shapes of the designs. Arrange the paper designs on the front piece as desired.



- Always test your embroidery on scraps of the actual fabric with the stabilizer and threads you will be using before starting your project.
- Mark the center and side markings of the embroidery, hoop the fabric according to the markings on the paper templates. Place tear-away stabilizer underneath and if the fabric needs more support use two layers of tear-away stabilizer underneath the fabric.

- The fabulous Precise Positioning feature on your creative™ 4.0 sewing and embroidery machine helps you match your embroideries perfectly even after hooping the fabric. See your Owner's manual for more information.
- Use the optional Sew-on Button Foot to easily sewing your buttons on. Just set the stitch width between the holes and your machine does all the work. By including a shaft, you can even sew on buttons with a thread shank. For more information refer to the PFAFF® Accessory Catalogue.

Finished!

